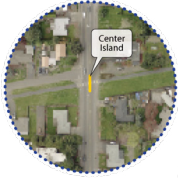


Walking and Biking Improvements: Design in Progress



225 Fifth Street
Springfield, OR 97477



19th St - EWEB
Crossing



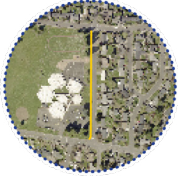
Darlene Ave
Sidewalk Installation



Hamlin Sidewalk
Installation



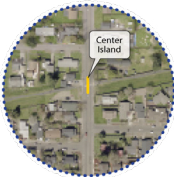
Thurston Rd
RRFB



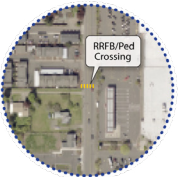
S. 37th St Sidewalk
Installation



Mohawk Blvd
RRFB



5th St - EWEB
Crossing



5th St RRFB

See reverse for more details...



Walking Biking Improvements: Design In Progress

Design work is underway to improve safety and accessibility for walking and biking throughout Springfield.

If you have any questions or comments regarding the project, please contact
Kristi Krueger P.E., Capital Engineering Manager
541-726-4584 or kkrueger@springfield-or.gov



<https://bit.ly/21196walkbike>

Springfield is improving safety and accessibility for people walking and biking by upgrading key pedestrian crossings and completing segments of sidewalks. Upgrades include new Rectangular Rapid Flashing Beacons (RRFBs), pedestrian islands, and sidewalks at key locations identified by the Springfield Bicycle and Pedestrian Advisory Committee and included in the City's 2035 Transportation System Plan and the Central Lane Regional Transportation System Plan. **Construction is planned for 2027.**

Where will work happen?

- Pedestrian crossing on Mohawk Blvd (south of 'I' St.) including a RRFB
- Pedestrian crossing on 5th Street (north of 'Q' Street) including a RRFB
- Pedestrian crossing at Thurston Road at 69th St including a RRFB
- Installation of a pedestrian island on 5th Street/EWEB path crossing
- Installation of a pedestrian island on 19th Street/EWEB path crossing
- Two portable temporary RRFBs
- Path installation on the north side of Hamlin Middle School (Pioneer Parkway East to 5th Street) with connection to the pedestrian crossing at Pioneer Parkway/Eastbound Ramp pedestrian crossing
- Sidewalk installation on S 37th Street on the east side of Douglas Gardens School (Redwood Drive to Jasper Road)
- Sidewalk installation on Darlene Ave (Dornach Street to Hartman Lane)