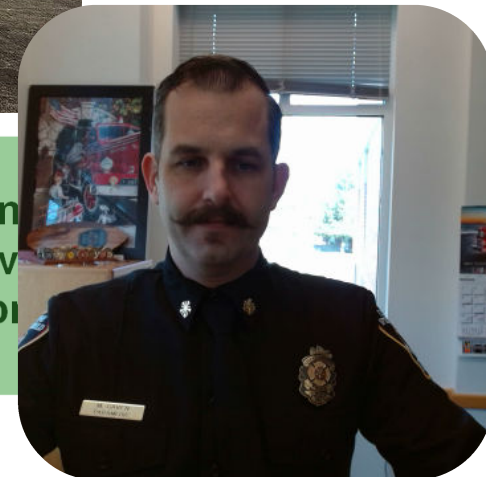




Our Mission: To serve our communities by preserving, protecting property, and the environment through prevention, education, emergency medical services, rescue, and fire suppression services.

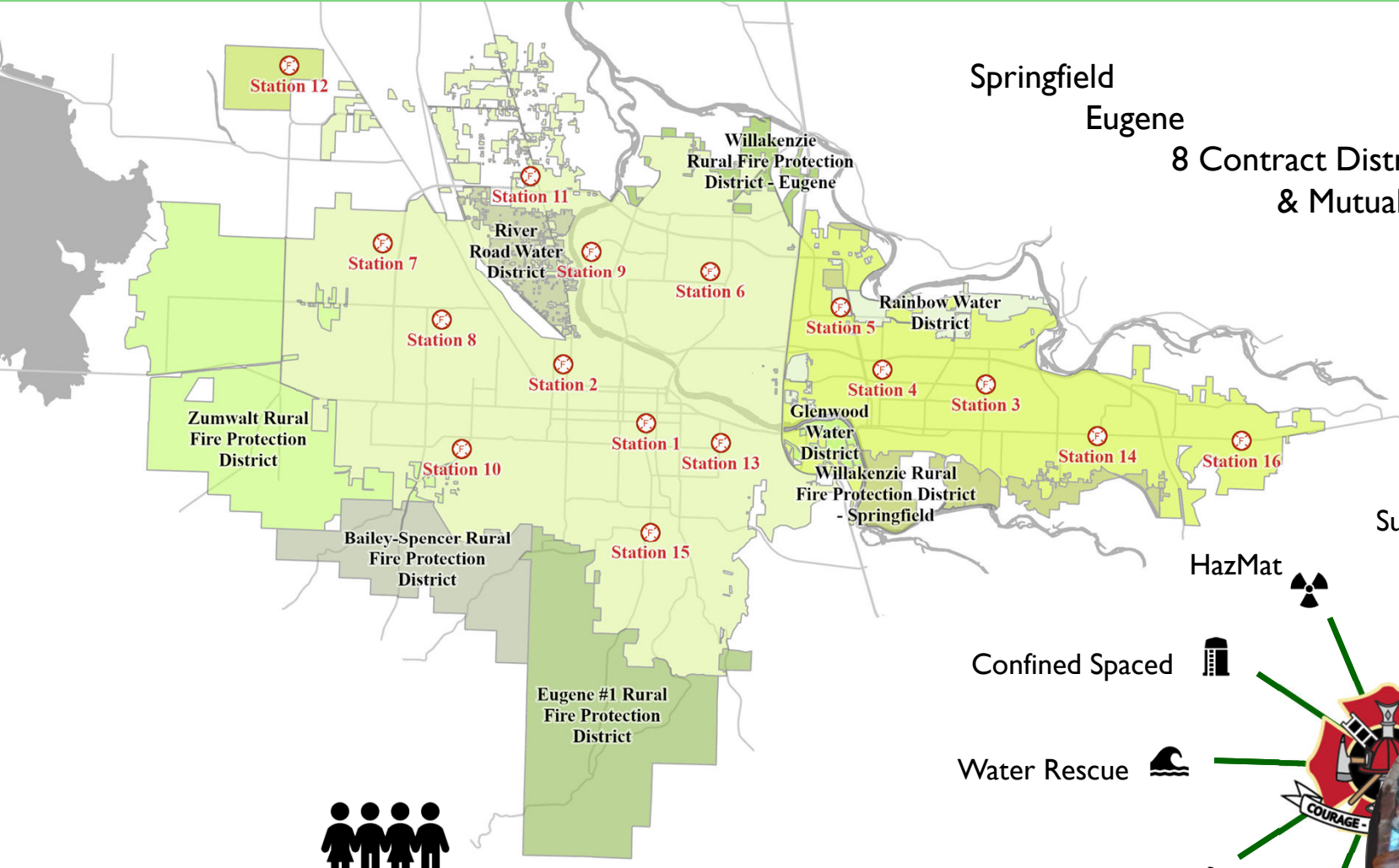




Fire & Life Safety

FY 2026

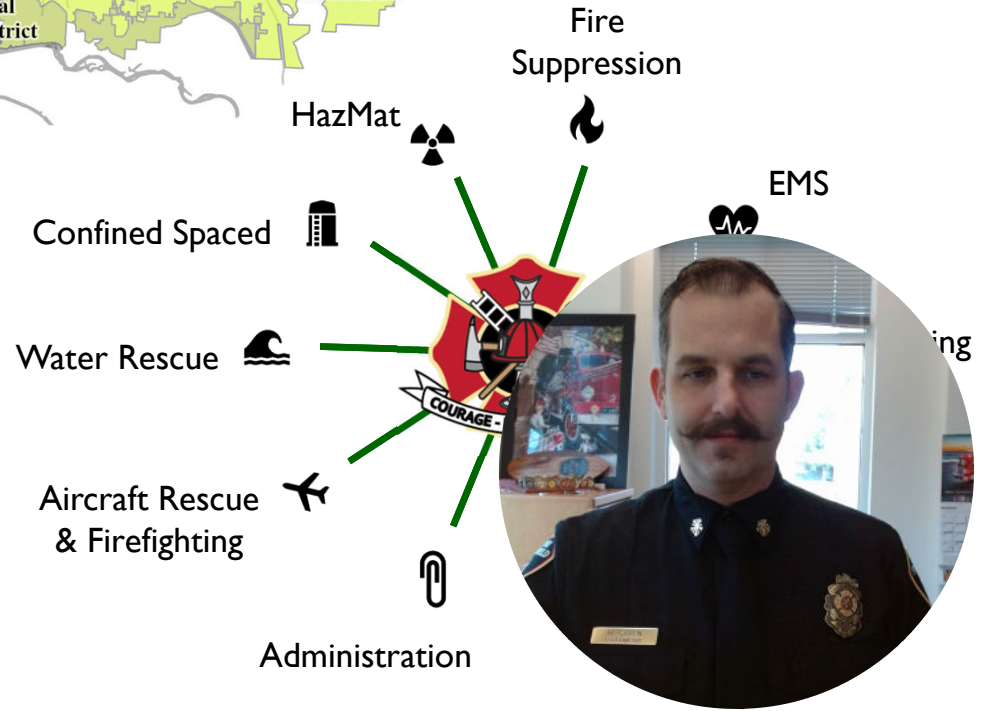
Summary of Services



Springfield
Eugene
8 Contract Districts
& Mutual Aid Agreements
1,736 sq miles



Serving Approx. 300,000 citizens





Fire & Life Safety

FY 2026

Response Services Provided



Emergency Medical Services

- Advanced Life Support (ALS)
 - # of Frontline Ambulances: 7 (3)
- Basic Life Support (BLS)
 - # of Frontline Ambulances: 3 (1)
- Private Ambulance – 2



Fire Protection Services

- Structure and Brush Fire Response
 - Springfield # of Frontline Fire Response Vehicles:
 - Engine: 13 (4)
 - Aerial: 4 (1)
 - ARFF: 2 (0)
 - Brush Engines: 4* (1)
 - Water Tenders: 3* (1)



Non-Fire Services

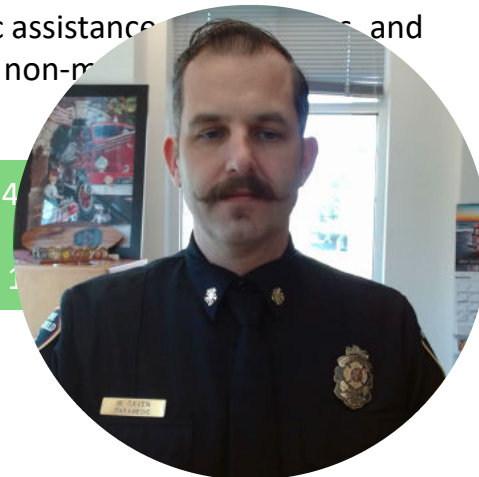
- Specialized Rescue and Response
 - Hazardous Materials Team (1 Crew)
 - Technical Rescue Team (1 Crews)
 - Water Rescue Team (2 Crews)
 - Airport Rescue Team (1 Crew)
- Public assistance and other non-m

FY24 Total ESF Calls
for Service:
42,888 (87.3%)

FY24 Total ESF Calls
for Service:
4,344 (8.9%)

FY24 Total ESF Calls
for Service:
1,000 (2.0%)

*Staffed with on duty personnel as needed.





Fire & Life Safety

FY 2026

Services Provided



Year End 2024

FIRE
23,350
Ambulance Transports



259
House, Apartment & Structure Fires

698
Brush, Grass, Field, Barkdust and other Fires



316
Highest single day call volume



47,713
Total Calls

2024 saw a decline of 1.6% in call volume this year. Over half of that decrease was the result in a change in our response protocols around crashes. Changes like this allow us to focus on calls that data shows have the most impact.

47,713
ESF 2024 Total Unit Hours on Calls



48,497
ESF 2023 Total Unit Hours on Calls

5-Year Trending Pattern

Incidents: 22% increase **Responses:** 7% increase **Time on Call:** 8% increase





Fire & Life Safety

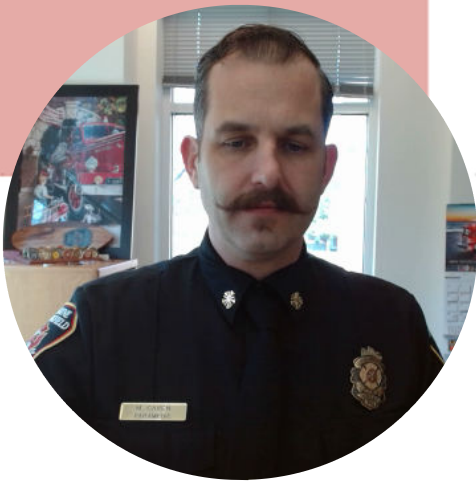
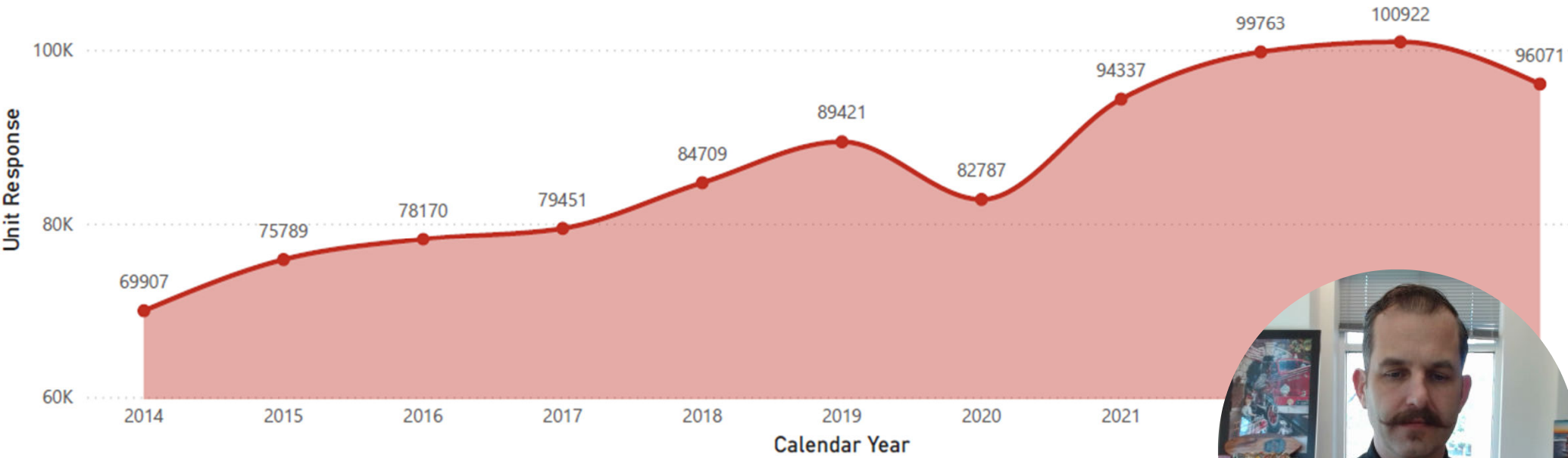
FY 2026

Services Provided



END-OF-YEAR REPORT | CY2024 UNIT RESPONSES

UNIT RESPONSES BY CALENDAR YEAR



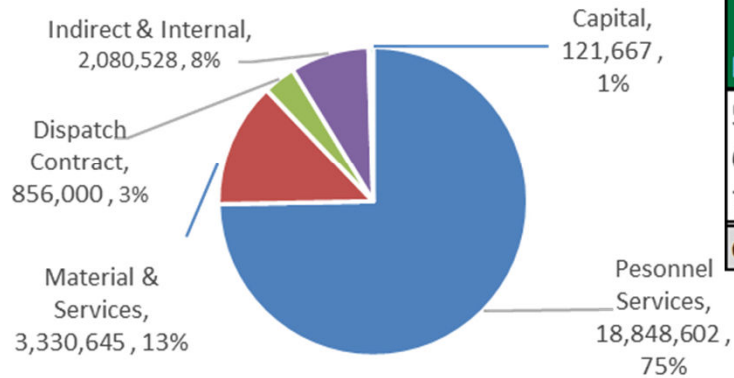


Fire & Life Safety

FY 2026

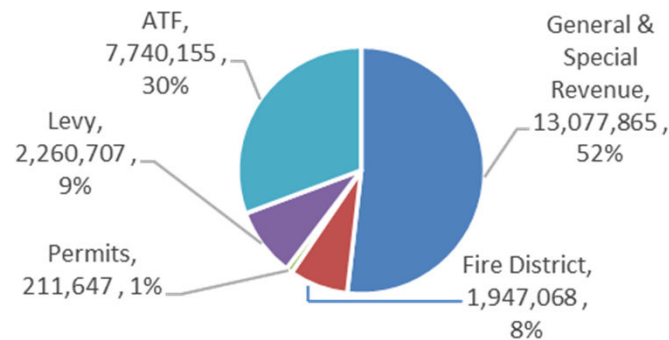
FY26 Proposed Budget Overview

FY26 Proposed Expenditure

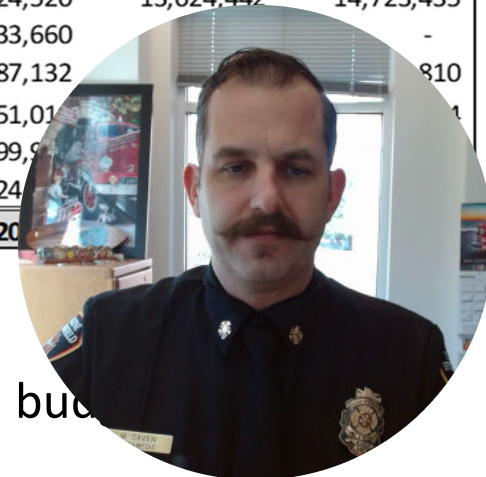


Financial Summary by Object Level	FY23 Actuals	FY24 Actuals	FY25 Amended	FY26 Proposed
5 PERSONNEL SERVICES	15,629,145	16,832,687	18,218,327	18,848,602
6 MATERIALS & SERVICES	6,887,816	6,437,125	5,304,769	6,267,173
7 CAPITAL OUTLAY	806,985	2,350,770	1,685,905	121,667
Grand Total	\$ 23,323,947	\$ 25,620,582	\$ 25,209,001	\$ 25,237,442

FY26 Proposed Resources



Financial Summary by Fund	FY23 Actuals	FY24 Actuals	FY25 Amended	FY26 Proposed
100 General Fund	12,537,426	13,324,520	13,624,442	14,723,435
204 Special Revenue Fund	867,822	333,660		-
224 Building Code Fund	83,858	87,132		810
235 Fire Local Option Levy Fund	1,690,732	2,351,010		1,690,732
615 Ambulance Fund	7,427,706	7,199,900		7,427,706
713 Vehicle & Equipment Fund	716,403	2,324,000		716,403
Grand Total	\$ 23,323,947	\$ 25,620,582	\$ 25,209,001	\$ 25,237,442



ESF's total FY26 proposed budget is: \$88,831,326
 Springfield Fire & Life Safety accounts for 28.4% of the overall budget

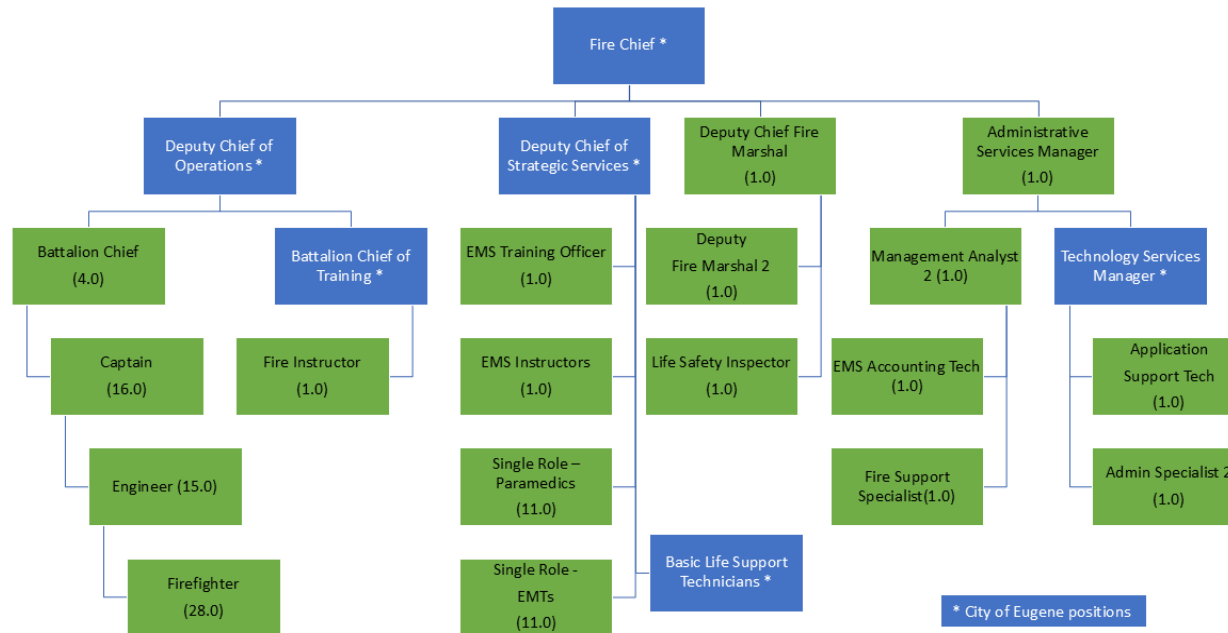


Fire & Life Safety

FY 2026

FY26 Proposed Staffing & FTE

Organizationa



Summary of Full-Time Equivalent by Fund

Summary of Full-Time Equivalents by Fund	FY23 FTE	FY24 FTE	FY25 FTE	FY26 FTE
100 General Fund	57.60	57.60	60.60	58.10
204 Special Revenue Fund	2.00	2.00	1.00	-
224 Building Code Fund	0.40	0.40	0.40	0.40
235 Fire Local Option Levy Fund	7.00	7.00	7.00	10.00
615 Ambulance Fund	26.00	26.00	29.00	28.50
Grand Total	93.00	93.00	98.00	97.00



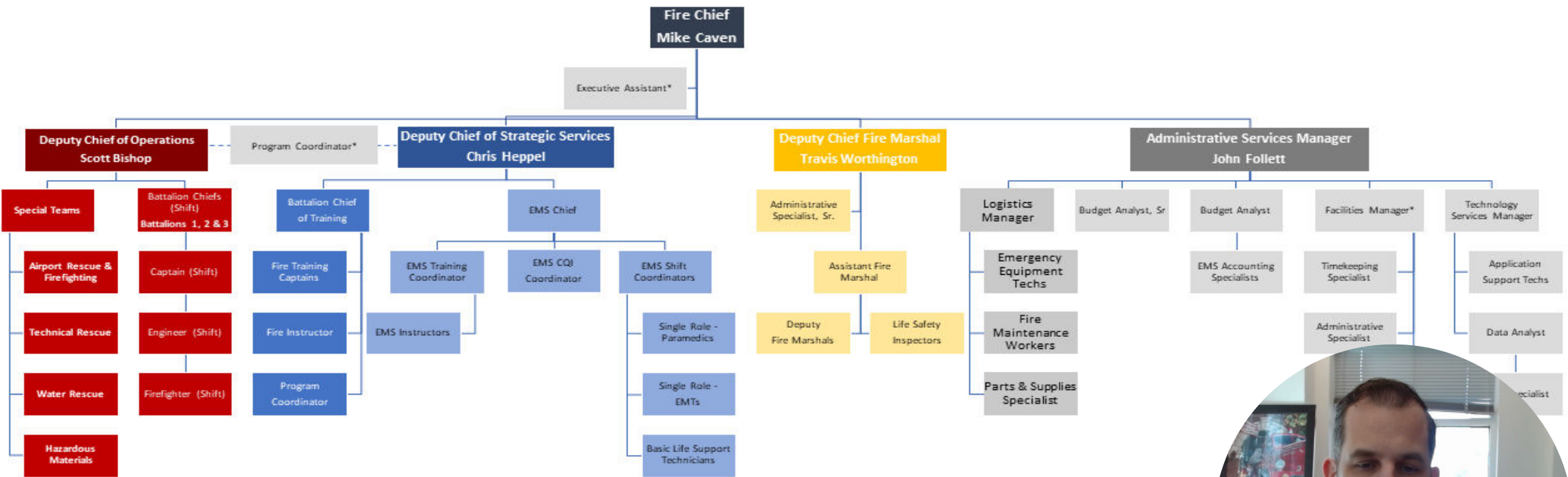


Fire & Life Safety

FY 2026

Full ESF Organizational Structure

Organizational Structure



* Executive Assistant and Program Coordinator are supervised by the Facilities Manager but receive direct supervision from the Fire Chief.



FY25 Accomplishments

Recruitment

- In FY25, the Department onboarded 15 firefighters, 20 single-role emergency medical services (EMS) employees, and 24 basic life safety (BLS) employees.

Wildfire

- Deployed to 10 separate wildfire conflagrations
- Invoiced OSFM over \$206,000 for Springfield's part
- Largest response was to Los Angeles

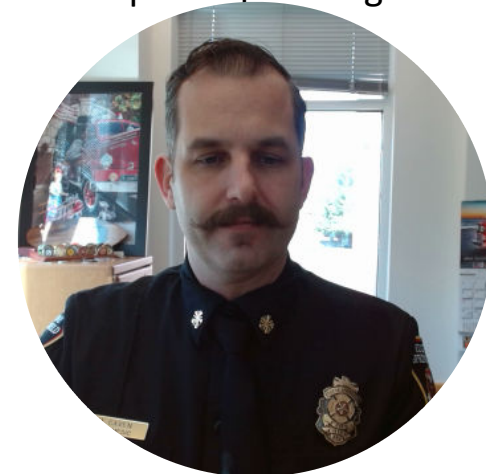


Data Management

- The Department deployed Darkhorse in 2025
- Software allows for real-time decision making on staffing and stations
- Allows command staff to be more informed in ESF's response planning and execution.

FY25 Accomplishments Special Events

- Continued Ambulance System Redesign
- Facilities Upgrades
- Fleet Replacement



FY26 Initiatives



Department Goals, Vision, Mission, Values and Guiding Document Updates

- Update organizational structures, modernize assignments and vision titles.
- Review core values and mission statement to guide regular update and revision of department policies.
- Update Standards of Cover and Strategic Plan documents.



Ambulance Transport System Redesign

- Completion of the single role EMS staff transition improving workforce availability and cost.
- Participation in the Lane County Ambulance Taskforce to address long term financial health.



Service Level Adjustments

- Leveraging data and experience to make adjustments to response packages to align need with resources to improve system reliability.
- Active management of temporary service level reductions.
- Elimination of the wildfire planning and fuels management program.



Fire Station Resilience

- Work with DPW-Operations, Finance and Emergency Management to secure funding of Oregon seismic grants to bring four out of five stations into seismic compliance.





Fire & Life Safety

FY 2026

FY27-29 Future Year Considerations

Plan for increasing call volume with population growth and an aging population



Station remodels/Seismic Upgrades

Ambulance Fund Reserves



Governance model

Continue to alternative service delivery models



Future growth acquisition and





Fire & Life Safety

FY 2026

Thank You!

