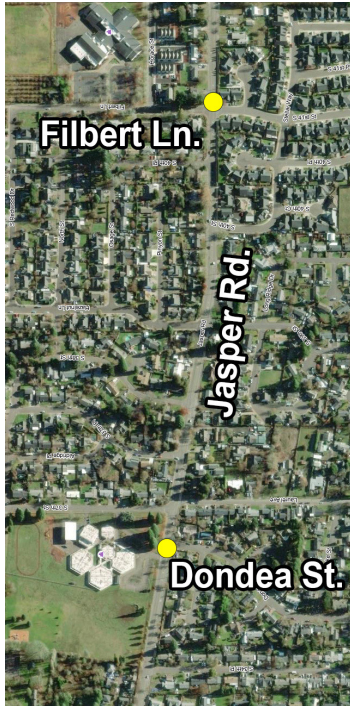


Work Starting on Jasper Rd. School Crossings



225 Fifth Street
Springfield, OR 97477

See reverse for more details...



Construction Starting on Jasper Road for School Crossing Safety Upgrades at Filbert Lane and Dondea Street

Construction is scheduled to begin soon for two school crossing upgrades on Jasper Rd.

If you have any questions or comments regarding the project, please contact City staff.

Brock Jabusch, engineering technician
541.248.7488 or bjabusch@springfield-or.gov

Jocelyn Grasseth, engineering technician
541.517.2273 or jgrasseth@springfield-or.gov

Kristi Krueger, capital engineering manager
541.726.4584 or kkruieger@springfield-or.gov



bit.ly/JasperRRFB

What does the project include?

- Ramp improvements at the intersections of Jasper Rd./Filbert Ln. and Jasper Rd./Dondea St.
- A pedestrian refuge center island on the west side of the Jasper Rd./Dondea St. intersection
- Double sided rectangular rapid flashing beacon (RRFB) crossing signals at each intersection that include tactile and voice audible pushbuttons for activation and double-sided flashers to increase the safety potential.

Will there be a street closure on Jasper Road?

No. However, at times you may have to wait for construction equipment to clear the street or have one-lane access.

How will this affect me?

You may experience minor travel delays during construction. You also may hear and see signs of construction. Access for pedestrians, including those with disabilities, will be available through or around the work zone.

Why do the project?

RRFBs have been proven to be effective countermeasures that increase the yielding rates of people driving and make it safer, more comfortable, and easier for people walking to cross the street.