

ADA CURB RAMP DESIGN EXCEPTION FORM

225 FIFTH STREET • SPRINGFIELD, OR 97477 • PH: 541-726-3753 • FAX: 541-726-3689

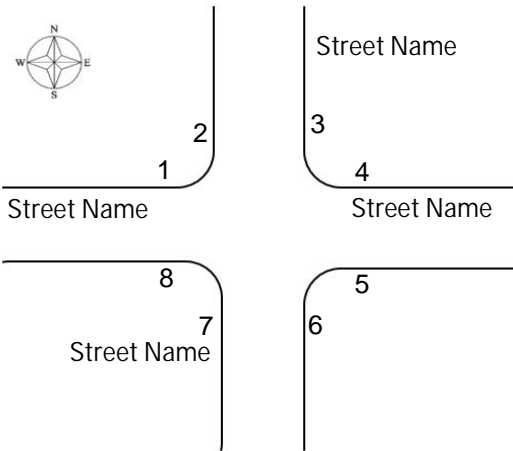


PROJECT DATA

Project/Permit Number	Project Name
Project Designer	Engineer of Record

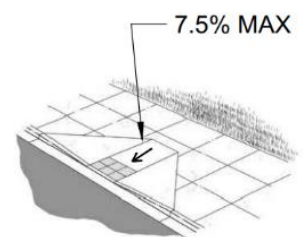
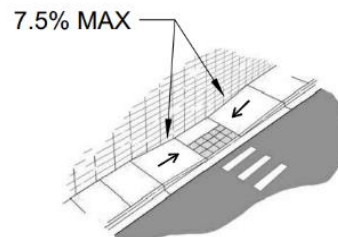
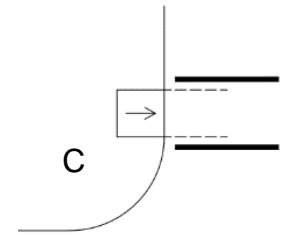
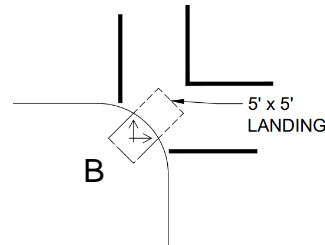
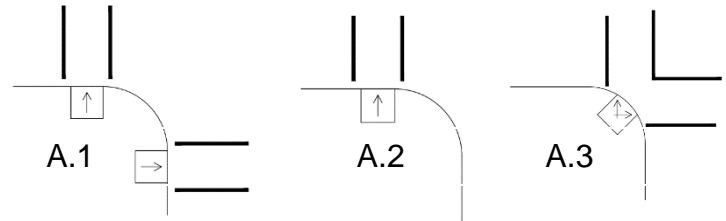
I. CURB RAMP LOCATION (ONE FORM PER RAMP)

- INDICATE CURB RAMP LOCATION BY REFERENCE NUMBER:
- UPLOAD DIAGRAM OF THE RAMP BELOW

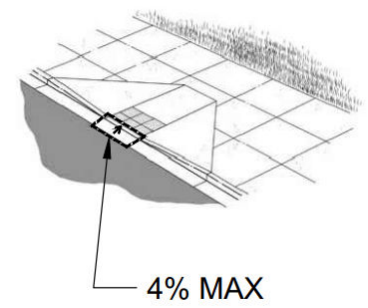
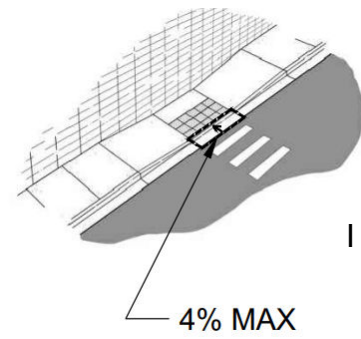
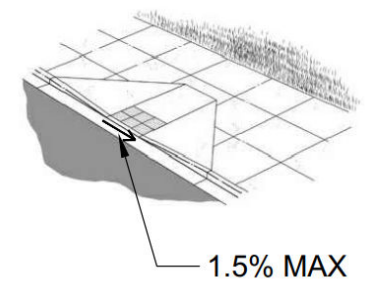
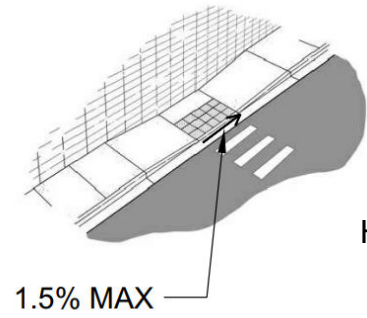
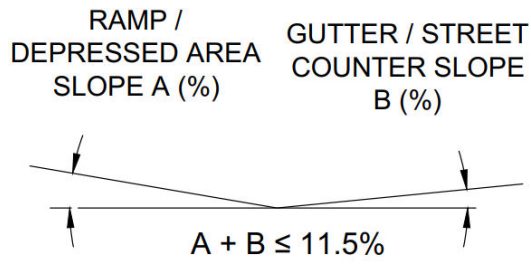
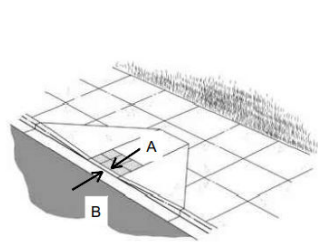
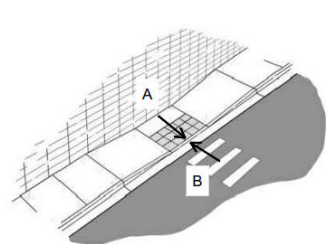
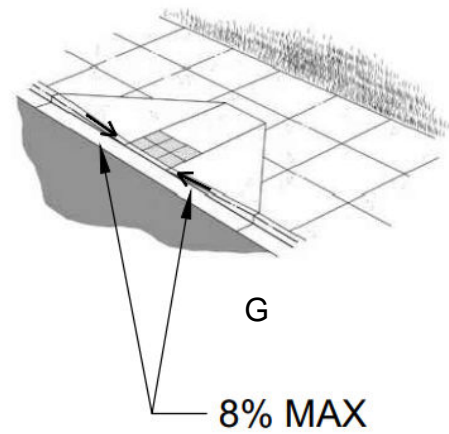
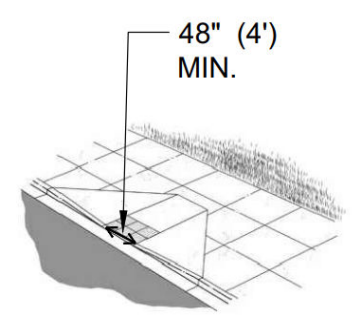
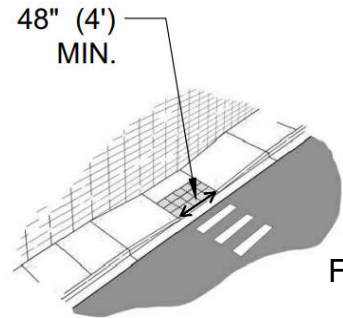
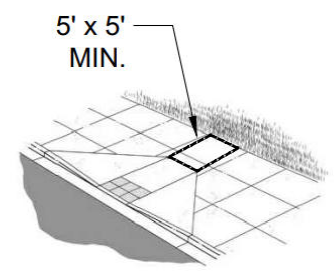
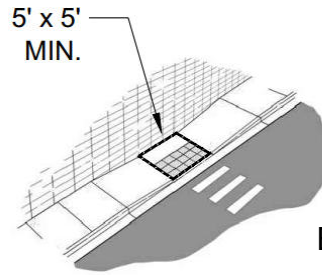


II. DESIGN CRITERIA FOR NEW RAMPS

CHECK IF ELEMENT MET	
A.	1. DOUBLE RAMP (E.G. CORNER HAS TWO DIRECTIONS OF TRAVEL ON SEPARATE RAMPS) OR 2. SINGLE RAMP PROVIDES ONE DIRECTION OF TRAVEL (E.G. CORNER HAS ONLY ONE DIRECTION OF LEGAL CROSSING OR IS A MID-BLOCK RAMP) OR 3. DIAGONAL RAMP PROVIDES BI-DIRECTIONAL TRAVEL (EXPLAIN NEED FOR A DIAGONAL RAMP IN THIS LOCATION)
B.	DIAGONAL RAMP (D) LANDING (MINIMUM 5' X 5') AT BOTTOM OF RAMP IN THE STREET IS OUTSIDE OF THE TRAVEL LANES (INCLUDING BIKE LANES)
C.	BOTTOM OF RAMP AS IT INTERSECTS WITH THE STREET IS COMPLETELY WITHIN THE LEGAL CROSSING
D.	MAX (DESIGN) RAMP RUNNING GRADE IS 7.5%



	E. MIN DIMENSIONS OF LEVEL LANDING IS 5' X 5'
	F. MIN RAMP THROAT WIDTH (EXCLUDING FLARES (WINGS)) IS 48 INCHES
	G. MAX RAMP FLARE (WING) IS 8% (CURB RETURN ALLOWED IF ADJACENT TO SOFTSCAPE OR COMPLETE LENGTH OF RAMP IS PHYSICALLY BLOCKED)
	H. MAX (DESIGN) STREET GUTTER GRADE AT BOTTOM OF RAMP IS 1.5%
	I. MAX (DESIGN) STREET CROSS SLOPE AT BOTTOM OF RAMP IS 4%
	J. MAX (DESIGN) STREET TO RAMP GRADE BREAK DIFFERENCE IS 11.5%
	K. PED PUSH BUTTON LOCATION COORDINATION WITH RAMP LAYOUT:
	(1) UNOBSTRUCTED AND ADJACENT TO A LEVEL ALL-WEATHER SURFACE. FOR PUSH BUTTON INSTALLED ON STAND-ALONE POLE, SKIRT OF POLE IS COMPLETELY OUTSIDE OF TOP OF RAMP LANDING.
	(2) IS IN OR WITHIN 5 FEET LONGITUDINALLY (ALONG CURB ALIGNMENT) OF THE OUTSIDE LIMITS OF THE MARKED (OR LEGAL UNMARKED) CROSSING.
	(3) IS BETWEEN 1.5 AND 6 FEET FROM FACE OF CURB, SHOULDER, OR EDGE OF PAVEMENT.
	(4) FACE IS PARALLEL TO THE CROSSWALK TO BE USED
	(5) CENTER OF PUSH BUTTON IS BETWEEN 3.5 – 4 FEET ABOVE THE ADJACENT WALKING SURFACE
	(6) IS WITHIN 10 INCHES OR LESS TO THE EDGE OF THE TOP OF RAMP LANDING
	NOTE: COORDINATE PUSH BUTTON PLACEMENT WITH CITY OF SPRINGFIELD ENGINEERING
	L. SIDEWALK PARALLEL RAMP PANELS RUNNING GRADE TO LANDING FROM BOTH DIRECTIONS ARE 8.33% ABSOLUTE OR LESS, OR MAX 15 FEET RUNNING LENGTH



III. FOR RAMPS THAT DO NOT MEET THE DESIGN CRITERIA LISTED ABOVE.

- LIST THE CRITERIA THAT ARE NOT MET AND EXPLAIN WHY.
- DESCRIBE MITIGATION OPTIONS AND/OR PLANS FOR FUTURE REHABILITATION.

--

APPROVALS

Engineer of Record Signature	Engineer of Record Stamp
Date	
City Engineer Signature	
Date	