

Middle Housing Taxlots in Low, Medium, and High Density Residential Zones

Taxlots in LDR, MDR, and HDR Zoning > 5,000 sqft

- 5,000 - 7,000 sqft - TRI
- 7,001 - 17,000 sqft - FOUR
- Over 17,000 sqft

Block Groups where Low & Moderate Income (LMI) % >=51



Zoning



Low Density Residential Zone (LDR)

Taxlots	Taxlot	Acres	% Total LDR Taxlots	% Total LDR Acreage
5,000<=7,000 sqft	5,453	774	28.4%	13.5%
7,000<=17,000 sqft	11,357	2,418	59.1%	42.2%
Over 17,000 sqft	1,287	2,441	6.7%	42.6%
Total over 5,000 sqft	18,097	5,634	94.2%	98.4%
Total LDR taxlots	19,202	5,726	100.0%	100.0%

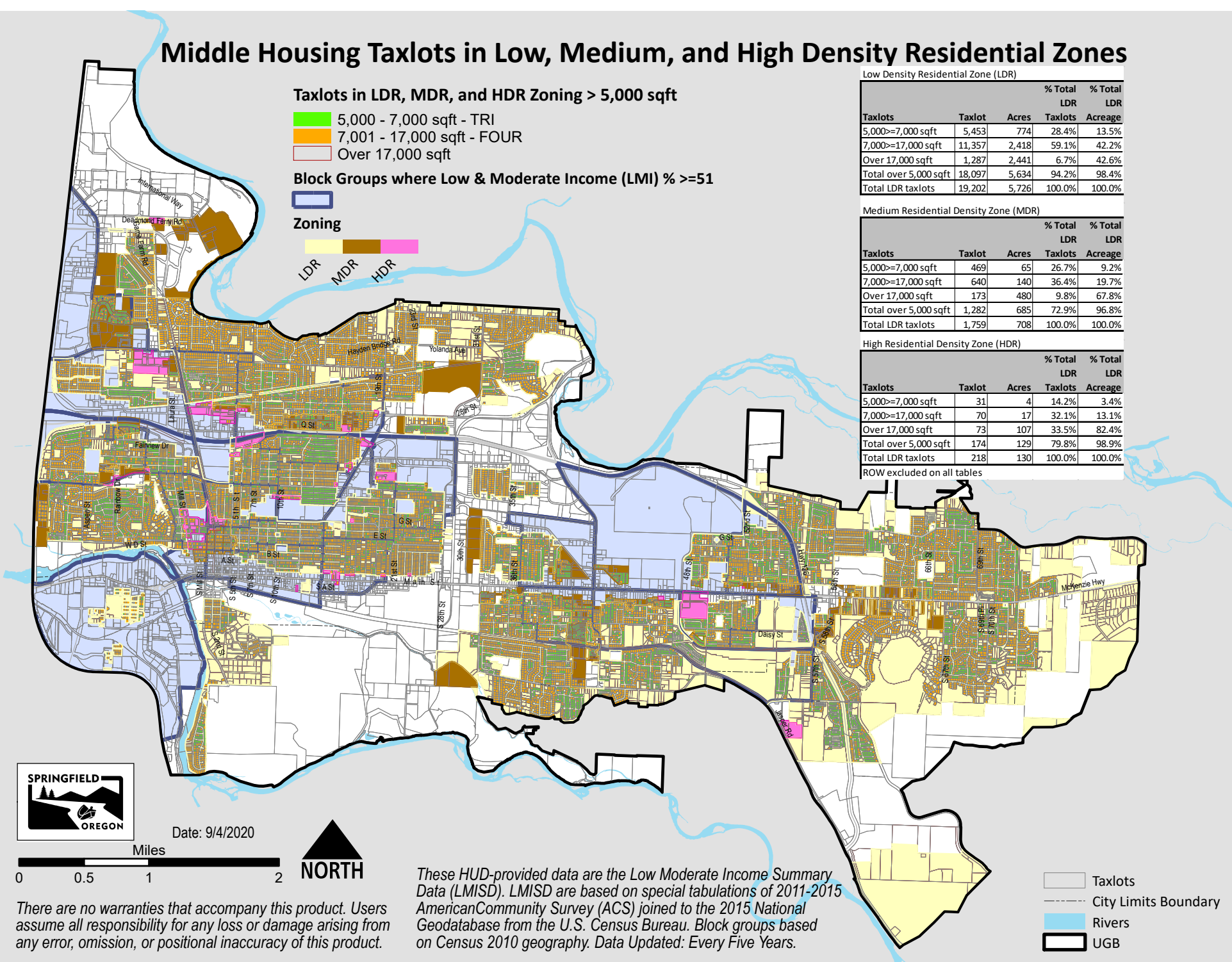
Medium Residential Density Zone (MDR)

Taxlots	Taxlot	Acres	% Total MDR Taxlots	% Total MDR Acreage
5,000<=7,000 sqft	469	65	26.7%	9.2%
7,000<=17,000 sqft	640	140	36.4%	19.7%
Over 17,000 sqft	173	480	9.8%	67.8%
Total over 5,000 sqft	1,282	685	72.9%	96.8%
Total MDR taxlots	1,759	708	100.0%	100.0%

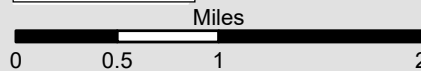
High Residential Density Zone (HDR)

Taxlots	Taxlot	Acres	% Total HDR Taxlots	% Total HDR Acreage
5,000<=7,000 sqft	31	4	14.2%	3.4%
7,000<=17,000 sqft	70	17	32.1%	13.1%
Over 17,000 sqft	73	107	33.5%	82.4%
Total over 5,000 sqft	174	129	79.8%	98.9%
Total HDR taxlots	218	130	100.0%	100.0%

ROW excluded on all tables



Date: 9/4/2020



There are no warranties that accompany this product. Users assume all responsibility for any loss or damage arising from any error, omission, or positional inaccuracy of this product.

These HUD-provided data are the Low Moderate Income Summary Data (LMISD). LMISD are based on special tabulations of 2011-2015 AmericanCommunity Survey (ACS) joined to the 2015 National Geodatabase from the U.S. Census Bureau. Block groups based on Census 2010 geography. Data Updated: Every Five Years.

- Taxlots
- City Limits Boundary
- Rivers
- UGB