



MEETING AGENDA

City of Springfield Development Code Update Project

Community Technical Advisory Committee - Housing

Tuesday, October 29, 2019

3:00 – 5:00 p.m.

Jesse Maine Room

Springfield City Hall, 225 Fifth Street

Item	Time	Subject	Lead
1	3:00	Welcome <ul style="list-style-type: none">• Agenda• Meeting Objectives	Mark Rust
2	3:05	Discuss siting and design standards for middle housing	All
3	3:45	Discuss locations for middle housing – triplex and fourplex	All
4	4:15	Discuss allowed uses – SRO's (Single Room Occupancy)	All
5	4:45	Next Steps	All
6	5:00	Adjourn	All

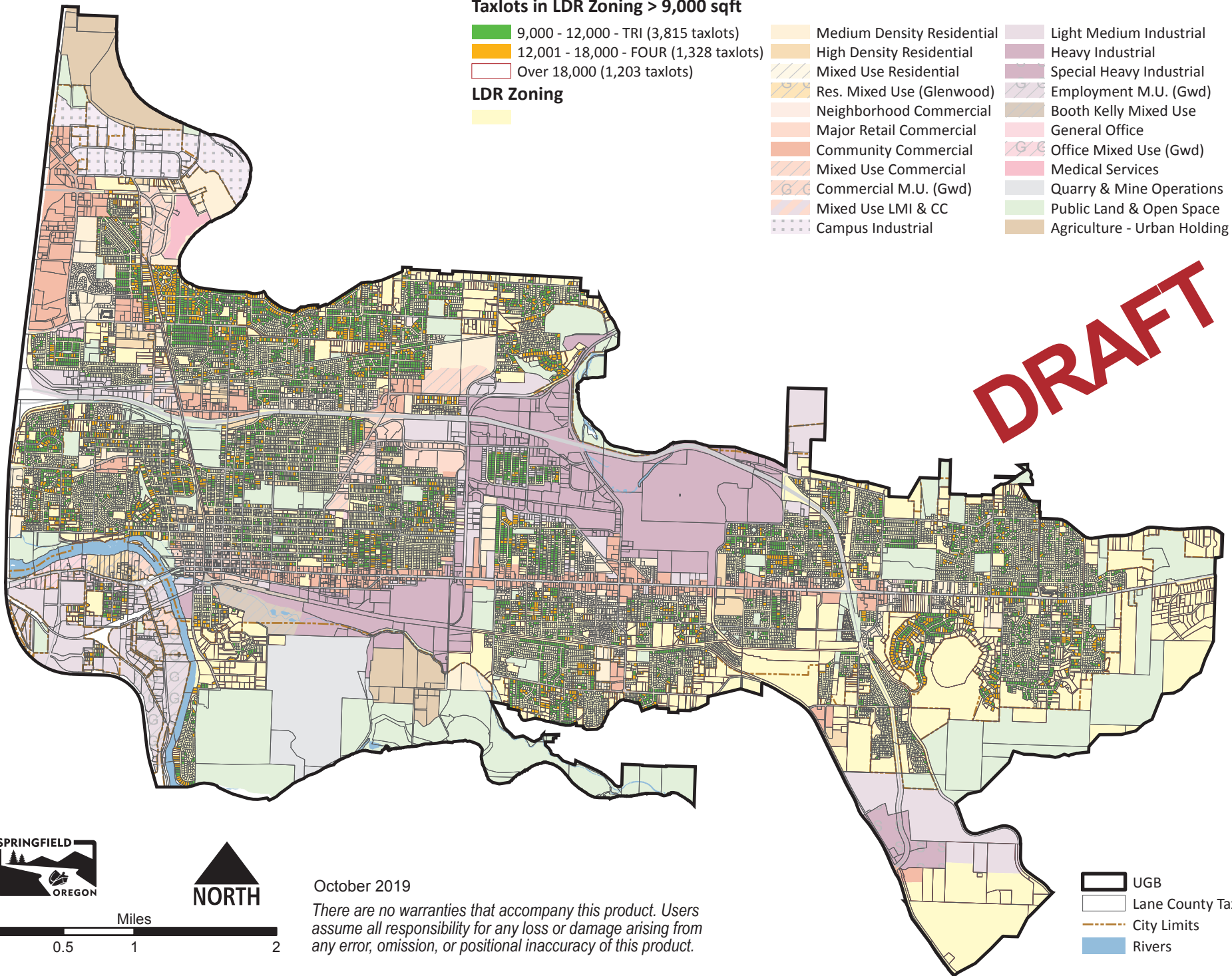
Taxlots in LDR Zoning > 9,000 sqft

- 9,000 - 12,000 - TRI (3,815 taxlots)
- 12,001 - 18,000 - FOUR (1,328 taxlots)
- Over 18,000 (1,203 taxlots)

LDR Zoning



- Medium Density Residential
- High Density Residential
- Mixed Use Residential
- Res. Mixed Use (Glenwood)
- Neighborhood Commercial
- Major Retail Commercial
- Community Commercial
- Mixed Use Commercial
- Commercial M.U. (Gwd)
- Mixed Use LMI & CC
- Campus Industrial
- Light Medium Industrial
- Heavy Industrial
- Special Heavy Industrial
- Employment M.U. (Gwd)
- Booth Kelly Mixed Use
- General Office
- Office Mixed Use (Gwd)
- Medical Services
- Quarry & Mine Operations
- Public Land & Open Space
- Agriculture - Urban Holding Area



DRAFT



October 2019

There are no warranties that accompany this product. Users assume all responsibility for any loss or damage arising from any error, omission, or positional inaccuracy of this product.

- UGB
- Lane County Taxlots
- City Limits
- Rivers