

CITY OF SPRINGFIELD

DEVELOPMENT & PUBLIC WORKS

SHEET INDEX

SHEET NO.	DESCRIPTION
A1-A3	TITLE, LEGEND/ABBR, LAYOUT, NOTES
F1-F7	PLAN SHEETS
Q1-Q2	EROSION AND SEDIMENT CONTROL

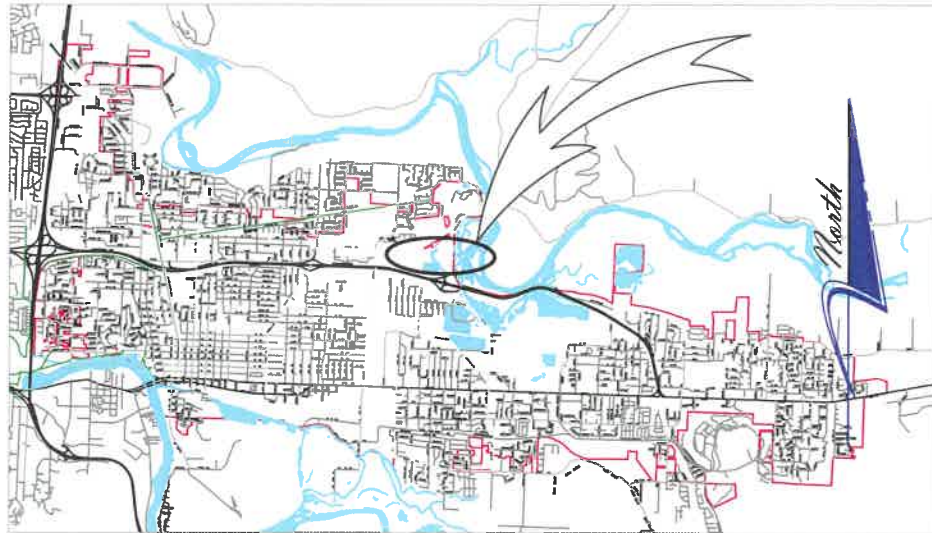
Project P21121

REGIONAL FUEL FACILITY UPGRADE

INSTALLATION OF SANITARY SEWER LATERAL, STORMWATER CATCH BASIN, CONCRETE WORK, AND SURFACE RESTORATION.

PROJECT LOCATION

SITE ADDRESS: 3585 MARCOLA RD SPRINGFIELD, OR 97477



VICINITY MAP



No.	Revision/Issue	Date

NOTE:
 UTILITY LOCATIONS ARE APPROXIMATE
 DO NOT
 SCALE OR LOCATE UTILITY LINES OR MAINS
 FROM THESE DRAWINGS
 CALL FOR UTILITY LOCATES
 811 or (1-800-332-2344)
 THE CONTRACTOR SHALL BE RESPONSIBLE
 FOR DETERMINING UTILITY LOCATIONS PRIOR TO
 BEGINNING OF CONSTRUCTION.
 THESE PLANS MAY NOT SHOW ALL UTILITIES OR
 THE CORRECT LOCATIONS.

Project P21121
REGIONAL FUEL FACILITY
UPGRADE

City of Springfield
PUBLIC WORKS / ENGINEERING
 225 FIFTH STREET, SPRINGFIELD, OR 97477
 PHONE (541) 726-3753 FAX (541) 726-3689
 INTERNET www.springfield-or.gov



EXP DATE: 6/30/2021

TITLE SHEET

NO SCALE	SHEET A1 OF 12
DRAWN BY: H. MADLAND	
DESIGNED BY: J. JONES	
CHECKED BY: J. PASCHALL	

UTILITIES CONTACT LIST

Company Name	Address	E-mail Address	Cell Phone	Office Phone	Contact
SUB Water	202 South 18th St. Springfield, OR 97577	laddb@subutil.com		541-501-0749	Ladd Boyce
SUB Water	202 South 18th St. Springfield, OR 97577	BartM@subutil.com	541-501-8222	541-744-3756	Bart McKee
SUB Electric	1001 Main St. Springfield, OR 97477	tonyt@subutil.com		541-744-3715	Tony Talbot
SUB Electric	1001 Main St. Springfield, OR 97477	TamaraP@subutil.com		541-744-3729	Tamara Pitman
SUB Electric	1001 Main St. Springfield, OR 97477	NickA@subutil.com		541.744.3711	Nick Amann
NW Natural Gas	790 Goodpasture Island Rd. Eugene, OR 97402	NWNEugeneEngineering@nwnatural.com		541-520-5343	Main extensions, relocates, new services
NW Natural Gas	790 Goodpasture Island Rd. Eugene, OR 97402			541-954-1255	Monte Brown
NW Natural Gas	790 Goodpasture Island Rd. Eugene, OR 97402			541-214-6639	Brian Brown
NW Natural Gas	790 Goodpasture Island Rd. Eugene, OR 97402	jwr@nwnatural.com		541-954-1336	John Radosevich
Century Link (Qwest) - Phone	1761 W.2nd Ave, Eugene,OR 97402	Luke.Pilon@CenturyLink.com		541-484-7827	Luke Pilon
Century Link (Qwest) - Phone	1762 W.2nd Ave, Eugene,OR 97402	John.pilon@Centurylink.com		541-484-8887	John Pilon
Century Link (Qwest) - Phone	1762 W.2nd Ave, Eugene,OR 97402	Jamianne.mackenzie@centurylink.com		541-484-7796	Jamianne Mackenzie
Comcast	Not in the Eugene area anymore but is a contact at Comcast	ryan_hansen@comcast.com		541-230-0079	Ryan Hansen
Comcast	2987 Chad Drive Eugene, OR 97408	jason_mcdonald3@comcast.com			
Level 3 Communications - Fiber	(Centurylink now owns)	NationalRelo@centurylink.com			
Level 3 Communications - Fiber	100 South Cincinnati Ave., Suite 1200, Tulsa, OK 74103	caleb.king@centurylink.com		918-547-0007	Caleb King
360Networks (Fiber)				877-735-7366	Chris Therrien
ATG	3723 Fairview Industrial Dr SE Sale, OR 97302			503-316-4452	Lon Blake
LTD	P. O. Box 7070 Springfield, OR 97475-0470	JMcCormack@LTD.Lane.or.us		541-682-6189	Joe McCormack
Rainbow Water District	P. O. Box 8 Springfield, OR 97477	Jamie@rwdonline.net		541-746-1676	Jamie Porter
Sprint/Nextel - Phone	2635 East Main St. Cottage Grove, OR 97424	michael.l.conley@sprint.com		541-942-7410	Mike Conley
Verizon		Investigations@Verizon.com			

ABBREVIATIONS

ABAN	ABANDON(ED)	DIA	DIAMETER	ID	INSIDE DIAMETER	RCP	REINFORCED CONCRETE PIPE
AC	ASPHALTIC CONCRETE	DR	DRIVE	IE	INVERT ELEVATION	RD	ROAD
ADA	AMERICANS WITH DISABILITIES ACT	DWG	DRAWING	LAT	LATERAL	REINF	REINFORCE(D)(ING)(MENT)
AL	ALUMINUM	DWY	DRIVEWAY	LDAP	LAND DRAINAGE & ALTERATION PERMIT	REQ'D	REQUIRED
APPROX	APPROXIMATELY	EA	EACH	LF	LINEAL FEET	RESTR	RESTRAINED
APPVD	APPROVED	EDOP	EDGE OF PAVEMENT	LP	LOW PRESSURE	ROW	RIGHT-OF-WAY
ARV	AIR RELEASE VALVE	EG	EXISTING GRADE	MATL(S)	MATERIALS	S/W	SIDEWALK
ASSY	ASSEMBLY	EL	ELEVATION	MAX	MAXIMUM	SCHED	SCHEDULE
BLDG	BUILDING	ELEC/E	ELECTRICAL	MFR(S)	MANUFACTURER(S)	SD	STORM DRAIN
BM	BENCHMARK	EOP	END OF PROJECT	MH(S)	MANHOLE(S)	SERV	SERVICE
BO	BLOWOFF	EQ	EQUAL	MHSD	MANHOLE STORM DRAIN	SHT(S)	SHEET(S)
BOP	BEGINNING OF PROJECT	EQUIP	EQUIPMENT	MHSS	MANHOLE SANITARY SEWER	SL	SLOPE
BTM	BOTTOM	ESMT	EASEMENT	MIN	MINIMUM	SPECS	SPECIFICATIONS
C/G	CURB & GUTTER	EX	EXISTING	MJ	MECHANICAL JOINT	SQ	SQUARE
C/L or CL	CENTER LINE	FAB	FABRICATE	MUTCD	MANUAL ON UNIFORM TRAFFIC CONTROL DEVICES	SQ FT	SQUARE FOOT
CB	CATCH BASIN	FD	FLOOR DRAIN	NTS	NOT TO SCALE	SS	SANITARY SEWER
CCP	CONCRETE CULVERT PIPE	FH	FIRE HYDRANT	OC	ON CENTER	SST	STAINLESS STEEL
CFFL	CURB FACE FLOW LINE	FIN GR	FINISHED GRADE	OD	OUTSIDE DIAMETER	ST	STREET
CI	CURB INLET	FL	FLOW LINE	ODOT	OREGON DEPARTMENT OF TRANSPORTATION	STA	STATION
CL	CLASS	FLG	FLANGE(D)	OVHD	OVERHEAD UTILITY	STD	STANDARD
CO	CLEANOUT	FM	FORCE MAIN	P	POWER	STL	STEEL
CONC/CON	CONCRETE	FT	FOOT	P/L	PROPERTY LINE	SUB	SPRINGFIELD UTILITY BOARD
CONST	CONSTRUCTION	FTG	FITTING	PCC	PORTLAND CEMENT CONCRETE	TB	THRUST BLOCK
COP	COPPER	G	GAS	PERM	PERMANENT	TEL/T	TELEPHONE
COS	CITY OF SPRINGFIELD	GALV	GALVANIZED	POLY	POLYETHYLENE	TEMP	TEMPORARY
CPLG	COUPLING	GR	GRADE	PRESS	PRESSURE	THK	THICK
CR	CRUSHED ROCK	GRVL	GRAVEL	PROP	PROPOSED	THRU	THROUGH
CV	CHECK VALVE	GV	GATE VALVE	PS	PUMP STATION	TV	TELEVISION
CY	CUBIC YARD	HMAC	HOT MIX ASPHALTIC CONCRETE	PUGD	UNDERGROUND POWER	TYP	TYPICAL
D	DRAIN	HORIZ	HORIZONTAL	PV	PLUG VALVE	VERT	VERTICAL(LY)
DET	DETAIL	HP	HIGH PRESSURE	PVC	POLYVINYL CHLORIDE	W	WATER
DI	DUCTILE IRON	HWY	HIGHWAY	PVMT	PAVEMENT	WM	WATER METER

THESE STANDARD DRAWINGS APPLY TO THIS PROJECT:

3-5
3-7
4-4
4-11
4-16
4-17

LEGEND

RIGHT OF WAY (ROW) LINE	
GAS LINE	
FIBER OPTIC (NO. OF CABLES)	
WATER LINE	
POWER (ELECTRIC)	
STORM SEWER (STATE)	
RIGHT OF WAY	
SANITARY SEWER (EXISTING)	
STORM SEWER (NEW)	
SANITARY SEWER (NEW)	
SAWCUT LINE	
AC OVERLAY LIMITS	
GAS VALVE	
WATER VALVE	
WATER LINE	
WATER METER	
UTILITY BOX	
POWER POLE/LIGHT	
CATCH BASIN EXISTING	
CURB INLET NEW	
STORM MANHOLE (NEW)	
SANITARY MANHOLE (EXISTING)	
SANITARY MANHOLE (NEW)	
STORM AREA DRAIN (NEW)	
MAIL BOX	
UTILITY POLE	
STORM AREA DRAIN (NEW)	
MAIL BOX	
UTILITY POLE	
TEE- OUTLET UP	

No.	Revision/Issue	Date

NOTE:

UTILITY LOCATIONS ARE APPROXIMATE DO NOT SCALE OR LOCATE UTILITY LINES OR MAINS FROM THESE DRAWINGS CALL FOR UTILITY LOCATES 811 or (1-800-332-2344)
THE CONTRACTOR SHALL BE RESPONSIBLE FOR DETERMINING UTILITY LOCATIONS PRIOR TO BEGINNING OF CONSTRUCTION. THESE PLANS MAY NOT SHOW ALL UTILITIES OR THE CORRECT LOCATIONS.

**Project P21121
REGIONAL FUEL FACILITY
UPGRADE**

City of Springfield
PUBLIC WORKS / ENGINEERING
225 FIFTH STREET, SPRINGFIELD, OR 97477
PHONE (541) 726-3753 FAX (541) 726-8889
INTERNET www.springfield-or.gov



EXP DATE: 6/30/2021

LEGENDS/ABBREVIATIONS

NO SCALE	SHEET A2 OF 12
DRAWN BY: H. MADLAND	CHECKED BY: J. PASCHALL
DESIGNED BY: J. JONES	

GENERAL CONSTRUCTION NOTES:

GENERAL CONSTRUCTION NOTES

- A. ALL MATERIALS AND WORKMANSHIP WITHIN THE PUBLIC RIGHT-OF-WAY OR PUBLIC EASEMENTS SHALL MEET STANDARD SPECIFICATIONS FOR CONSTRUCTION, AS SPECIFIED IN SECTION 'A' OF THE SPECIAL PROVISIONS IN ADDITION TO ALL OTHER SPECIFICATIONS REFERENCED OR INCLUDED, AND IN ADDITION TO THESE PLANS.
- B. OREGON LAW REQUIRES THE CONTRACTOR TO FOLLOW RULES ADOPTED BY THE OREGON UTILITY NOTIFICATION CENTER. THOSE RULES ARE SET FORTH IN OAR 952-001-0010 THROUGH OAR 952-001-0100. THE CONTRACTOR MAY OBTAIN COPIES OF THE RULES BY CALLING THE CENTER. NOTE: THE TELEPHONE NUMBER FOR THE OREGON UTILITY NOTIFICATION CENTER IS (800) 332-2344 OR 811.
- C. LOCATION AND/OR DEPTH OF EXISTING UTILITIES SHOWN ON PLANS ARE APPROXIMATE. ALL UTILITIES MAY NOT APPEAR ON PLANS. IT IS THE CONTRACTOR'S RESPONSIBILITY TO CONTACT ALL UTILITY COMPANIES FOR UNDERGROUND LOCATION OF FACILITIES AT LEAST 48 HOURS PRIOR TO EXCAVATING OR "POTHOLING". THE "ONE-CALL" NUMBER (800) 332-2344 OR 811.
- D. CONTRACTOR SHALL BE RESPONSIBLE FOR COORDINATION WITH UTILITY COMPANIES ON THE TIMING OF INSTALLATION OF THEIR FACILITIES.
- E. THE CONTRACTOR SHALL PROVIDE ALL TRAFFIC CONTROL DEVICES NECESSARY TO PROTECT AND SAFEGUARD THE PUBLIC AND WORKERS AGAINST INJURY AND PROTECT THE WORK AGAINST DAMAGE. ALL TEMPORARY TRAFFIC CONTROL SIGNING AND DEVICES SHALL BE IN PLACE PRIOR TO BEGINNING WORK. ALL TRAFFIC CONTROL SHALL CONFORM TO THE MANUAL ON UNIFORM TRAFFIC CONTROL DEVICES FOR STREETS AND HIGHWAYS (MUTCD), CURRENT EDITION, AS SUPPLEMENTED AND AMENDED BY THE OREGON SUPPLEMENTS. FLAGGING SHALL BE PERFORMED AS SHOWN IN THE THE "OREGON TEMPORARY TRAFFIC CONTROL HANDBOOK FOR OPERATIONS OF THREE DAYS OR LESS", 2011 OR CURRENT EDITION. THE CONTRACTOR SHALL BE RESPONSIBLE FOR ANY REQUIRED TRAFFIC CONTROL AS FIELD CONDITIONS WARRANT. THE CONTRACTOR SHALL SUBMIT A TRAFFIC CONTROL PLAN AT THE PRE-CONSTRUCTION CONFERENCE FOR CITY REVIEW AND APPROVAL.
- F. ALL SANITARY AND STORM SEWER CONNECTIONS TO EXISTING CITY OWNED FACILITIES (PIPE, CATCH BASINS, MANHOLES, ETC.) SHALL BE INSPECTED BY THE CONTRACTOR AND THE CITY'S DEVELOPMENT AND PUBLIC WORKS OPERATIONS DEPARTMENT PRIOR TO HOOK UP. CONTACT OPERATIONS AT (541-726-3761) OR CITY CONSTRUCTION INSPECTOR NO LESS THAN 48 HOURS PRIOR TO DESIRED INSPECTION TIME.
- G. WHERE CONNECTING TO AN EXISTING PIPE. THE CONTRACTOR SHALL EXPOSE THE END OF THE EXISTING PIPE AND ALLOW THE ENGINEER TO VERIFY EXACT LOCATION AND ELEVATION, CONDITION, AND POSITIVE FLOW BEFORE LAYING ANY NEW PIPE ON THAT SYSTEM.
- H. THE SEWER GRADE SHALL BE PER THE PLANS SPECIFICATIONS AND WITH THE MINIMUM COVER AS SHOWN ON THE PLANS
- I. THE CONTRACTOR SHALL INTERNALLY TELEVISION INSPECT THE SEWER AFTER ALL BACKFILL AND BEFORE THE FINAL LIFT OF ASPHALT PAVING. THE CONTRACTOR SHALL SUPPLY THE CITY WITH A WRITTEN T.V. REPORT AND VIDEO TAPE OR DVD FOR CITY APPROVAL AT LEAST 2 WORKING DAYS BEFORE THE PRE-PAVING MEETING.
- J. CONTRACTOR TO SCHEDULE A PRE-PAVING CONFERENCE 24 HOURS PRIOR TO PAVING. CONTACT THE CONSTRUCTION INSPECTOR.
- K. ALL JOINTS BETWEEN EXISTING AND NEW ASPHALT PAVING SHALL BE SEALED WITH POLYMERIZED ASPHALT.
- L. COMPACTION REQUIREMENTS:

LAYER	RATE	TEST
SUBGRADE	95%	T99
CRUSHED ROCK	95%	T180
ASPHALT (LOCAL)	90%	RICE
ASPHALT (COLLECTOR/ARTERIAL)	92%	RICE
- M. CONCRETE COMPRESSIVE STRENGTH REQUIREMENTS (PSI):

CONCRETE USE	FIELD	LABORATORY
SIDEWALK/ADA RAMPS	3000	3450
CURBS/GUTTERS	3500	4025
DRIVEWAYS	3500	4025
PAVEMENT	4000	4600
- N. THIS PROJECT SHALL COMPLY WITH THE AMERICAN DISABILITIES ACT REQUIREMENTS SUCH AS INCORPORATION OF DESIGN CRITERIA FOR RAMPS, MAXIMUM PROFILE AND CROSS SECTION SLOPES FOR SIDEWALKS, UPGRADING EXISTING FACILITIES WHERE MAJOR CONSTRUCTION IS OCCURRING, AND BUILDING WARNING FOR OBJECTS IN SIDEWALK SUCH AS CURBING OR LANDSCAPING AROUND MAILBOXES.
- O. CONTRACTOR IS RESPONSIBLE TO OBTAIN APPLICABLE PERMITS FROM OTHER AGENCIES WITH JURISDICTIONS SUCH AS LANE COUNTY, OREGON DEPARTMENT OF TRANSPORTATION, OREGON DIVISION OF STATE LANDS, THE ARMY CORPS OF ENGINEERS, OR THE DEPARTMENT OF ENVIRONMENTAL QUALITY.
- P. ALL IMPROVEMENTS THAT WILL BE PRIVATELY OWNED AND MAINTAINED WILL BE BOUND BY THE CURRENT REQUIREMENTS OF THE STATE OF OREGON STRUCTURAL SPECIALTY CODE, PLUMBING SPECIALTY CODE, AND/OR CITY OF SPRINGFIELD BUILDING DIVISION REQUIREMENTS. CONTRACTOR IS RESPONSIBLE TO OBTAIN APPLICABLE PERMITS FROM OTHER CITY DEPARTMENTS PRIOR TO DOING PRIVATE WORK.
- Q. EROSION CONTROL MEASURES SHALL BE IN PLACE PRIOR TO THE START OF CONSTRUCTION. SEE EROSION CONTROL PLAN.
- R. STREET TREES: ONLY STREET TREES WITH A MINIMUM TRUNK CALIPER OF 2 IN. MEASURED 6 IN. ABOVE THE ROOT STEM SHALL BE SELECTED FOR PLANTING.
- S. A PRE-CONSTRUCTION CONFERENCE IS REQUIRED BEFORE START OF CONSTRUCTION. ALL UTILITIES, CONTRACTORS AND CITY REPRESENTATIVES SHALL HAVE RECEIVED THE FINAL APPROVED PLANS AT LEAST 5 WORKING DAYS PRIOR TO THE PRE CONSTRUCTION CONFERENCE.
- T. THE ENGINEER AND/OR CITY HAVE THE RIGHT TO REQUIRE ADDITIONAL WORK NOT SHOWN HEREIN BUT NECESSARY FOR THE SUCCESSFUL COMPLETION OF THE PROJECT. STD.SPEC. 104.08.
- U. REQUESTS BY THE CONTRACTOR FOR CHANGES SHALL BE APPROVED BY THE ENGINEER AND THE CITY IN WRITING PRIOR TO IMPLEMENTATION.
- V. CONTRACTOR SHALL BE AWARE IF PAVING IS NOT SCHEDULED OR DOES NOT OCCUR PRIOR TO OCTOBER 15TH, WET WEATHER PROVISIONS INCLUDING ADDITIONAL ROCK SUBSTRUCTURE AND GEOTEXTILE FABRIC SHALL USED. REFER TO STANDARD SPECIFICATION SECTION 301.1.01 AND THE TYPICAL CROSS SECTIONS CONTAINED HEREIN FOR DETAILS.
- W. THE CONTRACTOR SHALL VERIFY EACH EXISTING SANITARY AND STORM CONNECTION.

No.	Revision/Issue	Date

NOTE:
 UTILITY LOCATIONS ARE APPROXIMATE
DO NOT
 SCALE OR LOCATE UTILITY LINES OR MAINS
 FROM THESE DRAWINGS
 CALL FOR UTILITY LOCATES
 811 or (1-800-332-2344)
 THE CONTRACTOR SHALL BE RESPONSIBLE
 FOR DETERMINING UTILITY LOCATIONS PRIOR TO
 BEGINNING OF CONSTRUCTION.
 THESE PLANS MAY NOT SHOW ALL UTILITIES OR
 THE CORRECT LOCATIONS.

**Project P21121
 REGIONAL FUEL FACILITY
 UPGRADE**

City of Springfield

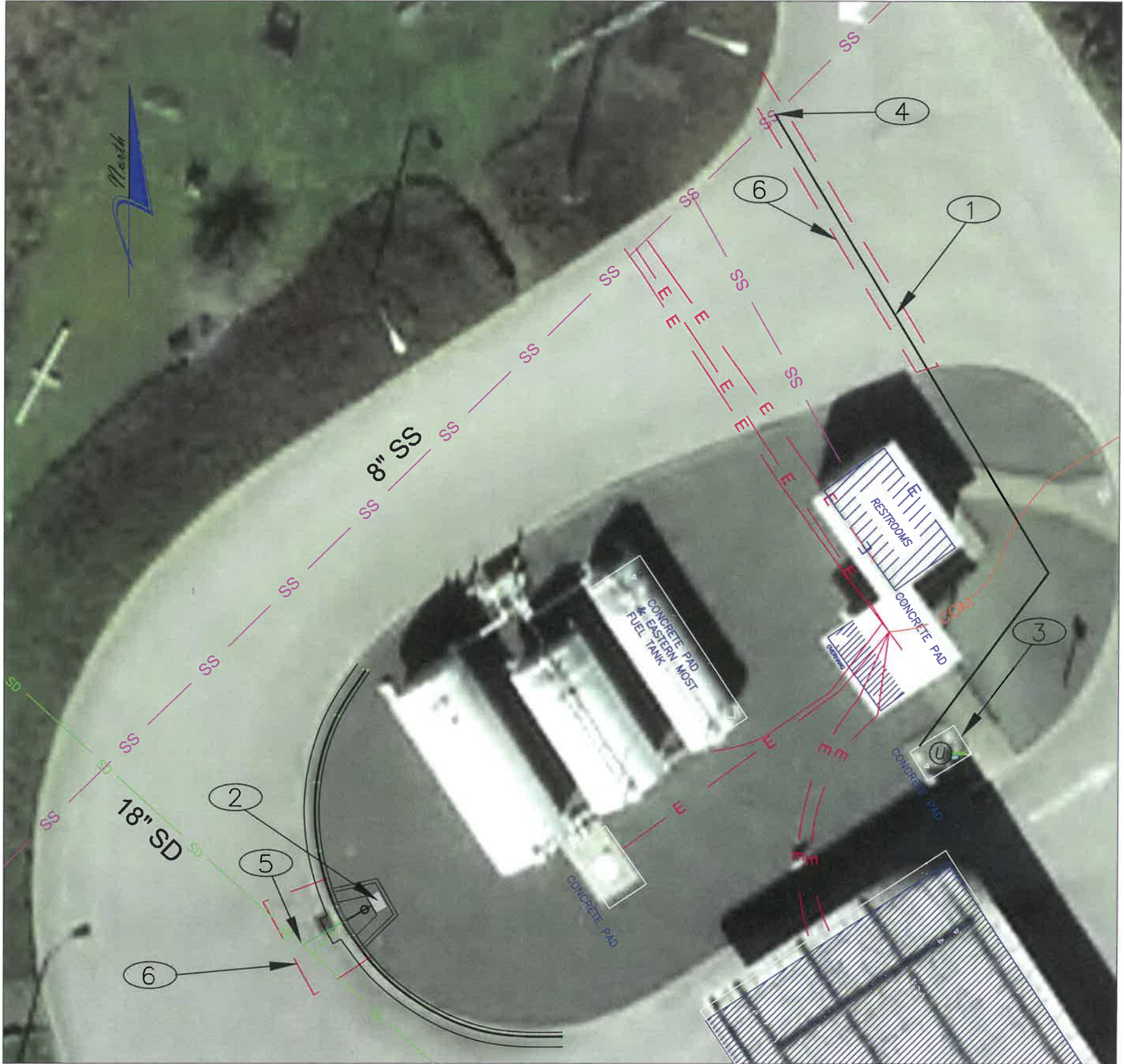
SPRINGFIELD OREGON

PUBLIC WORKS / ENGINEERING
 225 FIFTH STREET, SPRINGFIELD, OR 97477
 PHONE (541) 726-3763 FAX (541) 726-3689
 INTERNET www.springfield-or.gov



EXP DATE: 6/30/2021

GEN. CONSTRUCTION NOTES	
NO SCALE	SHEET A3 OF 12
<small>DRAWN BY: H. MADLAND</small>	
<small>DESIGNED BY: J. JONES</small>	
<small>CHECKED BY: J. PASCHALL</small>	



SITE PLAN NOTES:

- ① INSTALL NEW 6" D3034 SDR-35 PVC SANITARY SEWER LATERAL AND CLEAN-OUTS. SEE STD DWG 4-17 FOR DETAILS AND SHT F2 FOR PLAN AND PROFILE
- ② INSTALL NEW CATCH BASIN AND SHUTOFF VALVE. SEE SHT F4 FOR DETAILS
- ③ EXISTING OIL WATER SEPARATOR
- ④ CONNECT TO EXISTING 8" PVC SANITARY LINE. REPLACE EXISTING 8" WITH 6" PVC FACTORY TEE AND RIGID COUPLER
- ⑤ CORE DRILL AND CONNECT 6" D3034 SDR-35 PVC TO EXISTING 18" CONCRETE STORM LINE
- ⑥ REMOVE AND REPLACE ASPHALT, MATCH EXISTING ELEVATION SEE STD DWG 4-16. USE CDF FOR TOP 24" OF TRENCH BACKFILL UNDER ASPHALT AREAS

No.	Revision/Issue	Date

NOTE:

UTILITY LOCATIONS ARE APPROXIMATE
DO NOT
 SCALE OR LOCATE UTILITY LINES OR MAINS
 FROM THESE DRAWINGS
 CALL FOR UTILITY LOCATES
 811 or (1-800-332-2344)

THE CONTRACTOR SHALL BE RESPONSIBLE
 FOR DETERMINING UTILITY LOCATIONS PRIOR TO
 BEGINNING OF CONSTRUCTION.
 THESE PLANS MAY NOT SHOW ALL UTILITIES OR
 THE CORRECT LOCATIONS.

**Project P21121
 REGIONAL FUEL FACILITY
 UPGRADE**

City of Springfield
 PUBLIC WORKS / ENGINEERING
 225 FIFTH STREET, SPRINGFIELD, OR 97477
 PHONE (541) 726-3753 FAX (541) 726-3669
 INTERNET www.springfield-or.gov

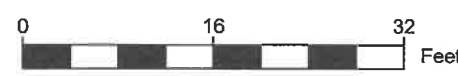


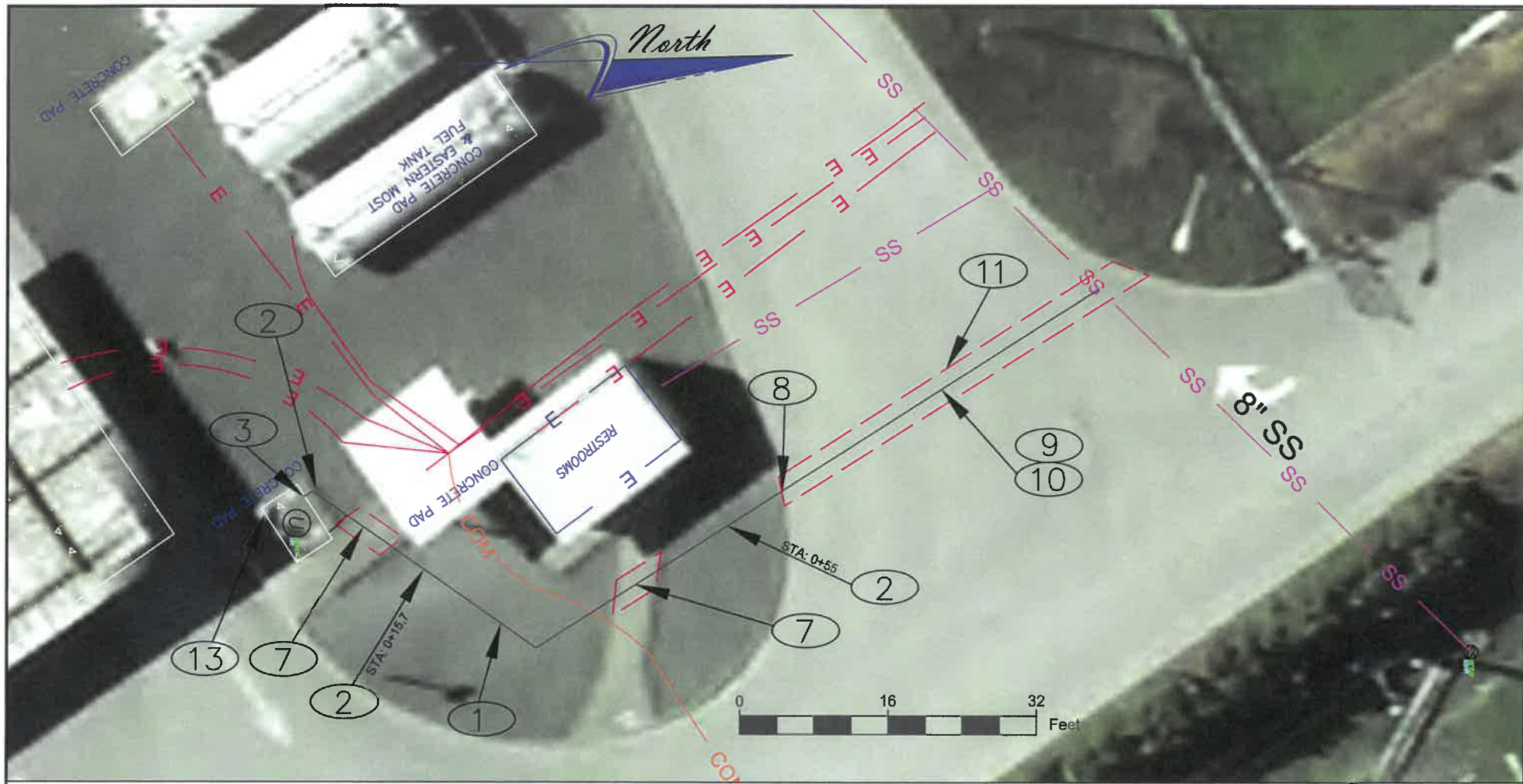
EXP. DATE: 6/30/2021

SITE PLAN

SCALE 1:16	SHEET F1 OF 12
DRAWN BY: H. MADLAND	
DESIGNED BY: J. JONES	
CHECKED BY: J. PASCHALL	

REGIONAL FUEL FACILITY





CONSTRUCTION NOTES:

- ① INSTALL NEW 6" D3034 SDR-35 PVC PIPE
- ② INSTALL 6" TWO-WAY WYE CLEANOUT. SEE DETAILS 1 & 2 ON SHT F3
- ③ CONNECT LATERAL TO EXISTING OIL WATER SEPARATOR. SEE DETAIL 1 ON SHT F2
- ④ 6" TO 4" PIPE ADAPTOR. SEE DETAIL 1 ON SHT F2
- ⑤ 6" TEE CONNECTION. SEE DETAIL 1 ON SHT F2
- ⑥ 6" ELBOW. SEE DETAIL 1 ON SHT F2
- ⑦ REMOVE AND REPLACE SIDEWALK
- ⑧ REMOVE AND REPLACE CURB AND GUTTER
- ⑨ REMOVE AND REPLACE ASPHALT, MATCH EXISTING THICKNESS, MINIMUM 4" THICK
- ⑩ TRENCH RESTORATION SEE STD DWG 4-16
- ⑪ SAWCUT BOUNDARY TO BE MARKED IN FIELD BY CITY
- ⑫ CONNECT 6" D3034 SDR-35 PVC PIPE TO OIL WATER SEPARATOR USING A PVC SAND COLLAR
- ⑬ INSTALL MECHANICAL PLUG IN EXISTING OUTLET

No.	Revision/Issue	Date

NOTE:
 UTILITY LOCATIONS ARE APPROXIMATE. DO NOT SCALE OR LOCATE UTILITY LINES OR MAINS FROM THESE DRAWINGS. CALL FOR UTILITY LOCATES 811 or (1-800-332-2344).
 THE CONTRACTOR SHALL BE RESPONSIBLE FOR DETERMINING UTILITY LOCATIONS PRIOR TO BEGINNING OF CONSTRUCTION. THESE PLANS MAY NOT SHOW ALL UTILITIES OR THE CORRECT LOCATIONS.

**Project P21121
 REGIONAL FUEL FACILITY
 UPGRADE**

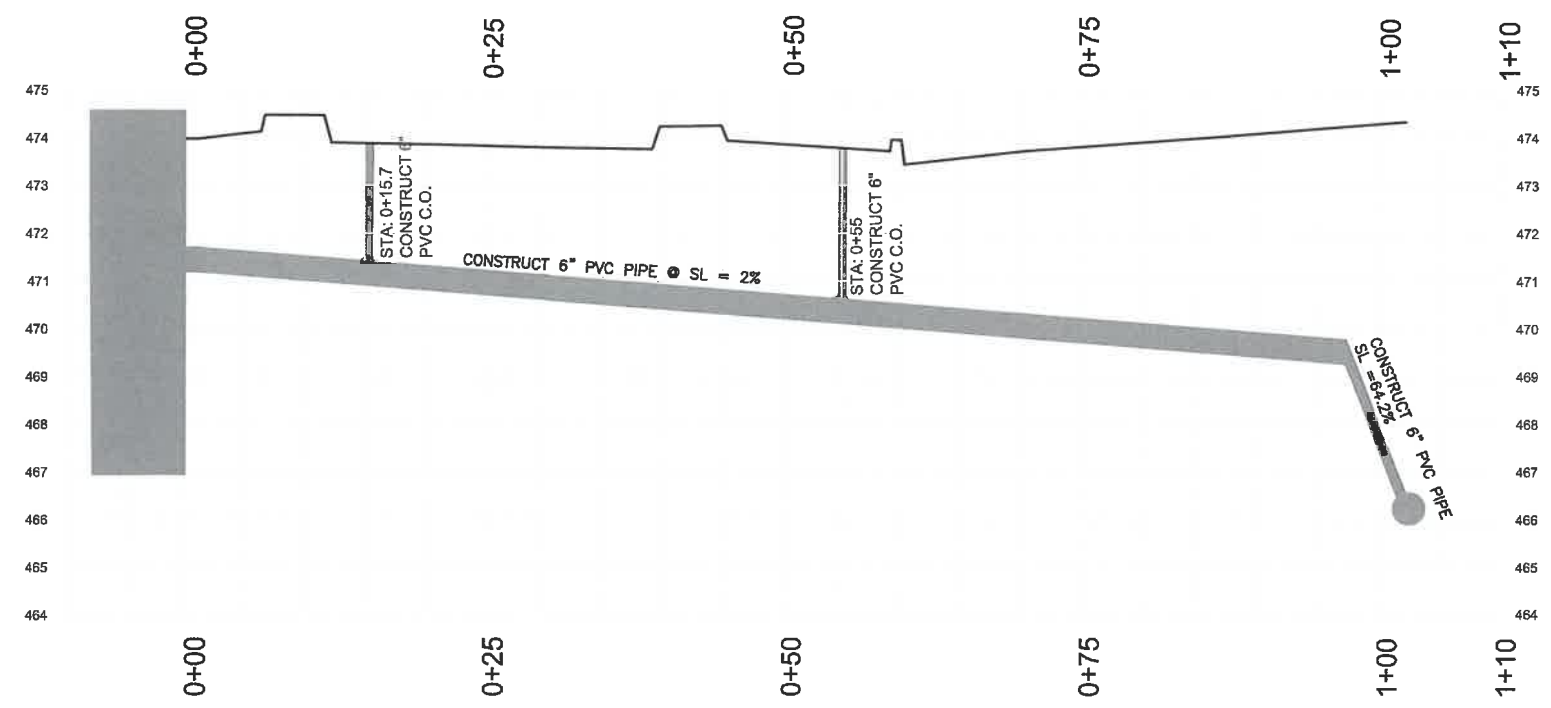
City of Springfield
 PUBLIC WORKS / ENGINEERING
 202 E. 11th Street, Springfield, OR 97477
 PHONE: (503) 725-3688 FAX: (503) 725-3688
 INTERNET: www.springfield-or.gov

REGISTERED PROFESSIONAL ENGINEER
 67041PE
 OREGON
 JUNE 11, 2008
 JESSE H. JONES

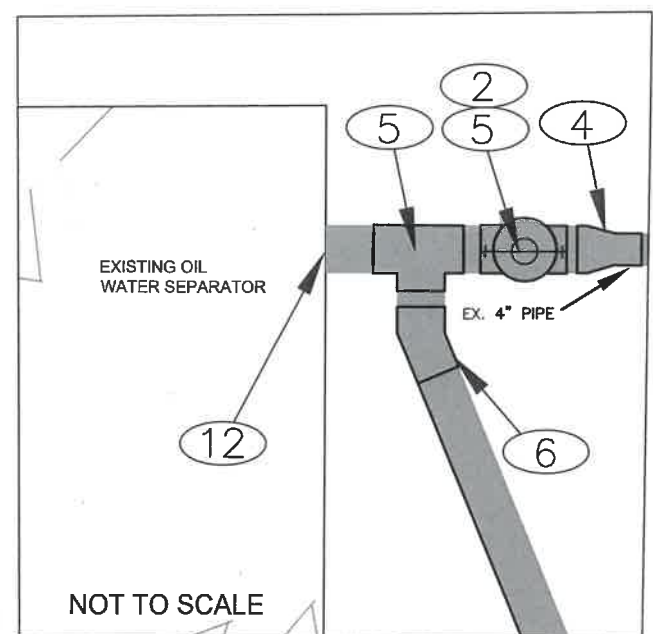
EXP. DATE: 6/30/2021

PLAN AND PROFILE

SCALE: 1:16
 SHEET F2 OF 12
 DRAWN BY: H. MADLAND
 DESIGNED BY: J. JONES
 CHECKED BY: J. PASCHALL



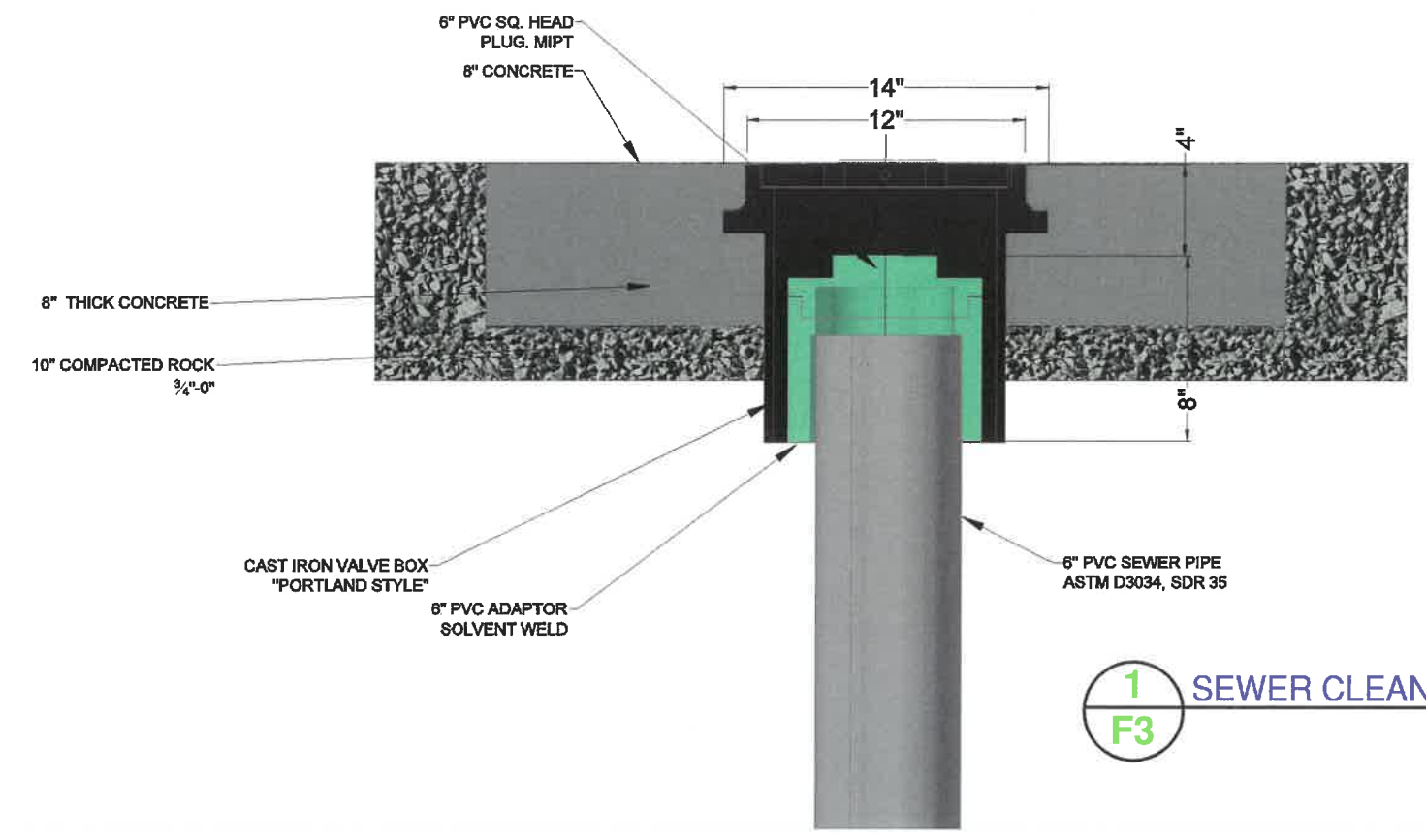
OIL WATER SEPARATOR TO EXISTING SANITARY LINE PLAN AND PROFILE



1 OIL WATER SEPARATOR DETAIL
F2

No.	Revision/Issue	Date

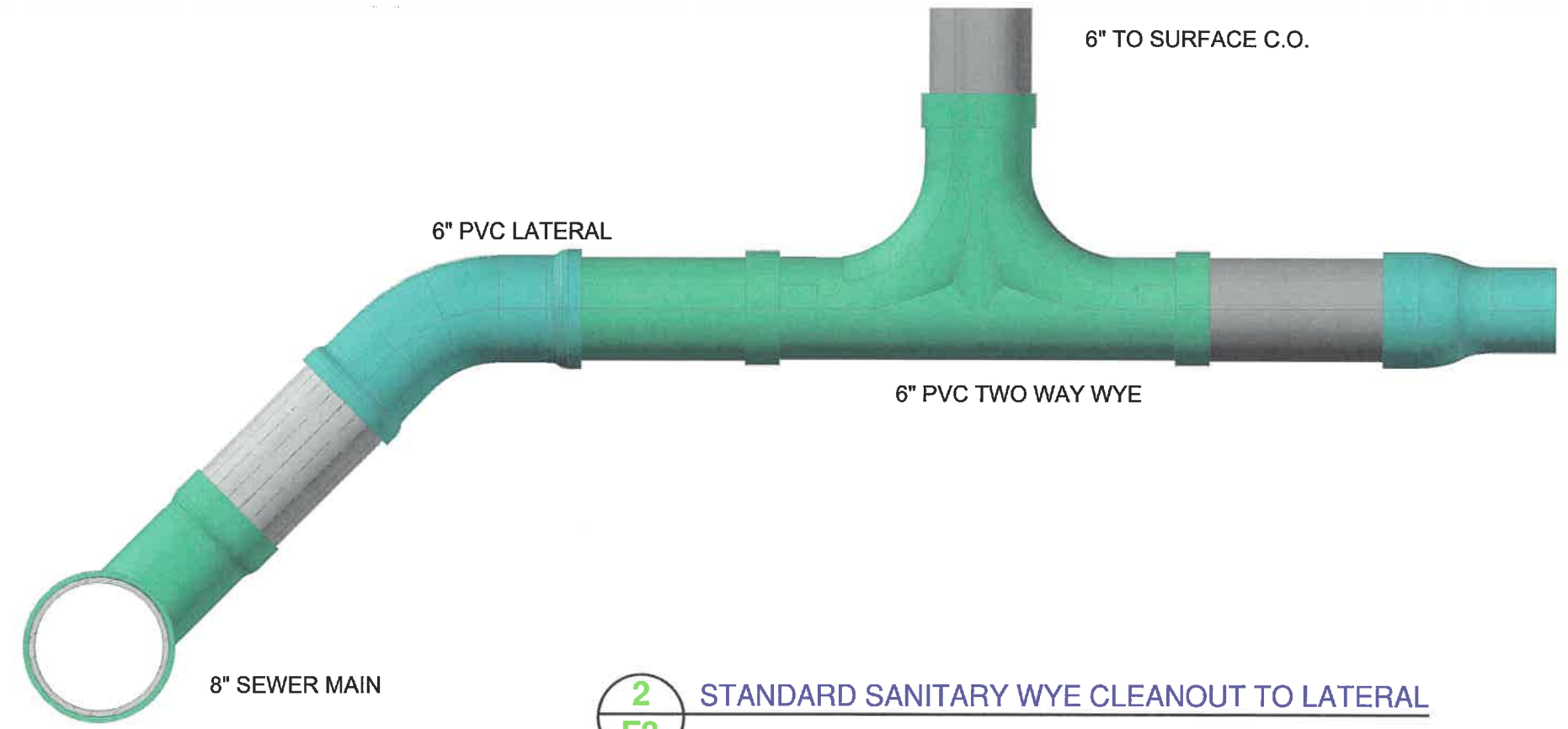
NOTE:
 UTILITY LOCATIONS ARE APPROXIMATE
DO NOT
 SCALE OR LOCATE UTILITY LINES OR MAINS
 FROM THESE DRAWINGS
 CALL FOR UTILITY LOCATES
 811 or (1-800-332-2344)
 THE CONTRACTOR SHALL BE RESPONSIBLE
 FOR DETERMINING UTILITY LOCATIONS PRIOR TO
 BEGINNING OF CONSTRUCTION.
 THESE PLANS MAY NOT SHOW ALL UTILITIES OR
 THE CORRECT LOCATIONS.



1
F3 SEWER CLEANOUT SURFACE DETAIL

DETAIL NOTES:

- VALVE BOXES SHALL BE CENTERED DIRECTLY OVER THE STANDPIPE IN A VERTICAL POSITION.
- THE VALVE BOX TOP SHALL BE ADJUSTED TO MEET THE FINISHED GRADE.



2
F3 STANDARD SANITARY WYE CLEANOUT TO LATERAL

Project P21121
REGIONAL FUEL FACILITY
UPGRADE

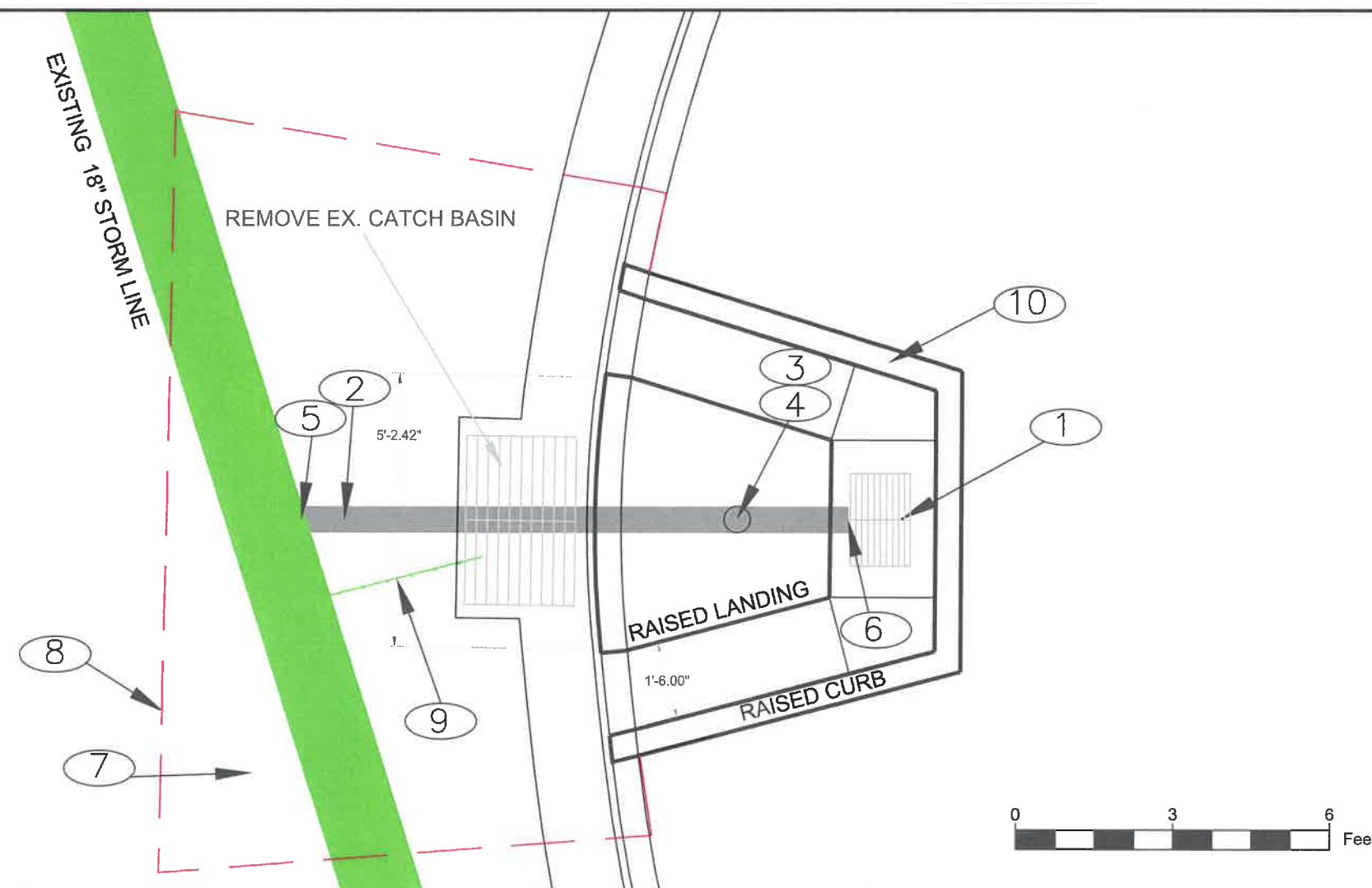
City of Springfield
PUBLIC WORKS / ENGINEERING
 225 FIFTH STREET, SPRINGFIELD, OR 97417
 PHONE (541) 726-3753 FAX (541) 726-8689
 INTERNET www.springfield-or.gov



EXP. DATE: 6/30/2021

DETAILS

NOT TO SCALE	SHEET F3 OF 12
DRAWN BY: H. MADLAND	
DESIGNED BY: J. JONES	
CHECKED BY: J. PASCHALL	



CONSTRUCTION NOTES:

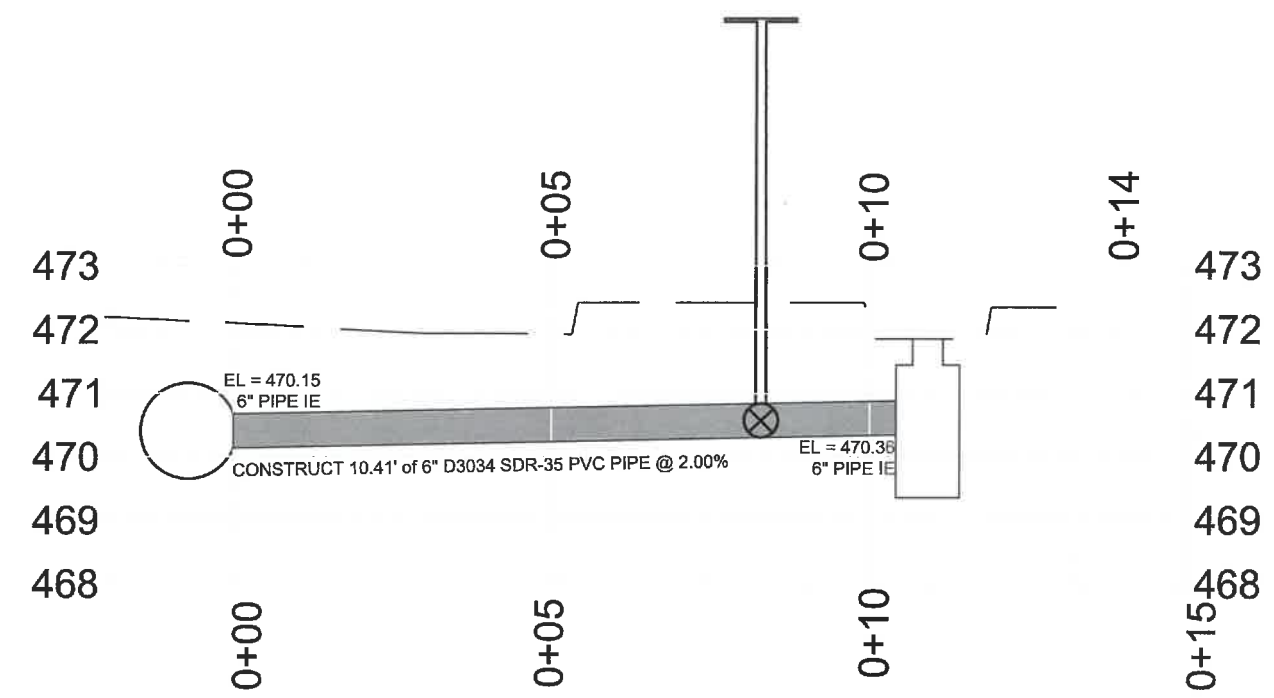
- ① INSTALL NEW ADVANTAGE PRECAST T40 CATCH BASIN OR APPROVED EQUAL
- ② INSTALL NEW 6" D3034 SDR-35 PVC PIPE
- ③ INSTALL 72" VALVE STEM EXTENSION, TUF-SKIN PART #VSE-1-72 OR APPROVED EQUAL
- ④ INSTALL 6" BUTTERFLY VALVE, TUF-SKIN PART #B-0600-L OR APPROVED EQUAL
- ⑤ CORE DRILL AND CONNECT TO EXISTING 18" CONCRETE PIPE USING INSERTA-TEE OR APPROVED EQUAL
- ⑥ CONNECT TO CATCH BASIN USING PVC SAND COLLAR
- ⑦ REMOVE AND REPLACE ASPHALT, MATCH EXISTING THICKNESS, MINIMUM 4" THICK
- ⑧ SAWCUT BOUNDARY TO BE MARKED IN FIELD BY CITY
- ⑨ INSTALL MECHANICAL PLUG IN EXISTING OUTLET
- ⑩ CONSTRUCT NEW CONCRETE CURB, GUTTER, AND LANDING. SEE SHTS F5, F6, AND F7

No.	Revision/Issue	Date

NOTE:
 UTILITY LOCATIONS ARE APPROXIMATE **DO NOT** SCALE OR LOCATE UTILITY LINES OR MAINS FROM THESE DRAWINGS CALL FOR UTILITY LOCATES 811 or (1-800-332-2344)
 THE CONTRACTOR SHALL BE RESPONSIBLE FOR DETERMINING UTILITY LOCATIONS PRIOR TO BEGINNING OF CONSTRUCTION. THESE PLANS MAY NOT SHOW ALL UTILITIES OR THE CORRECT LOCATIONS.

**Project P21121
 REGIONAL FUEL FACILITY
 UPGRADE**

City of Springfield
 PUBLIC WORKS / ENGINEERING
 225 FIFTH STREET, SPRINGFIELD, OR 97477
 PHONE (541) 726-3753 FAX (541) 726-3689
 INTERNET www.springfield-or.gov



NEW CATCH BASIN TO EXISTING STORMLINE PLAN AND PROFILE



EXP. DATE: 6/30/2021

PLAN AND PROFILE

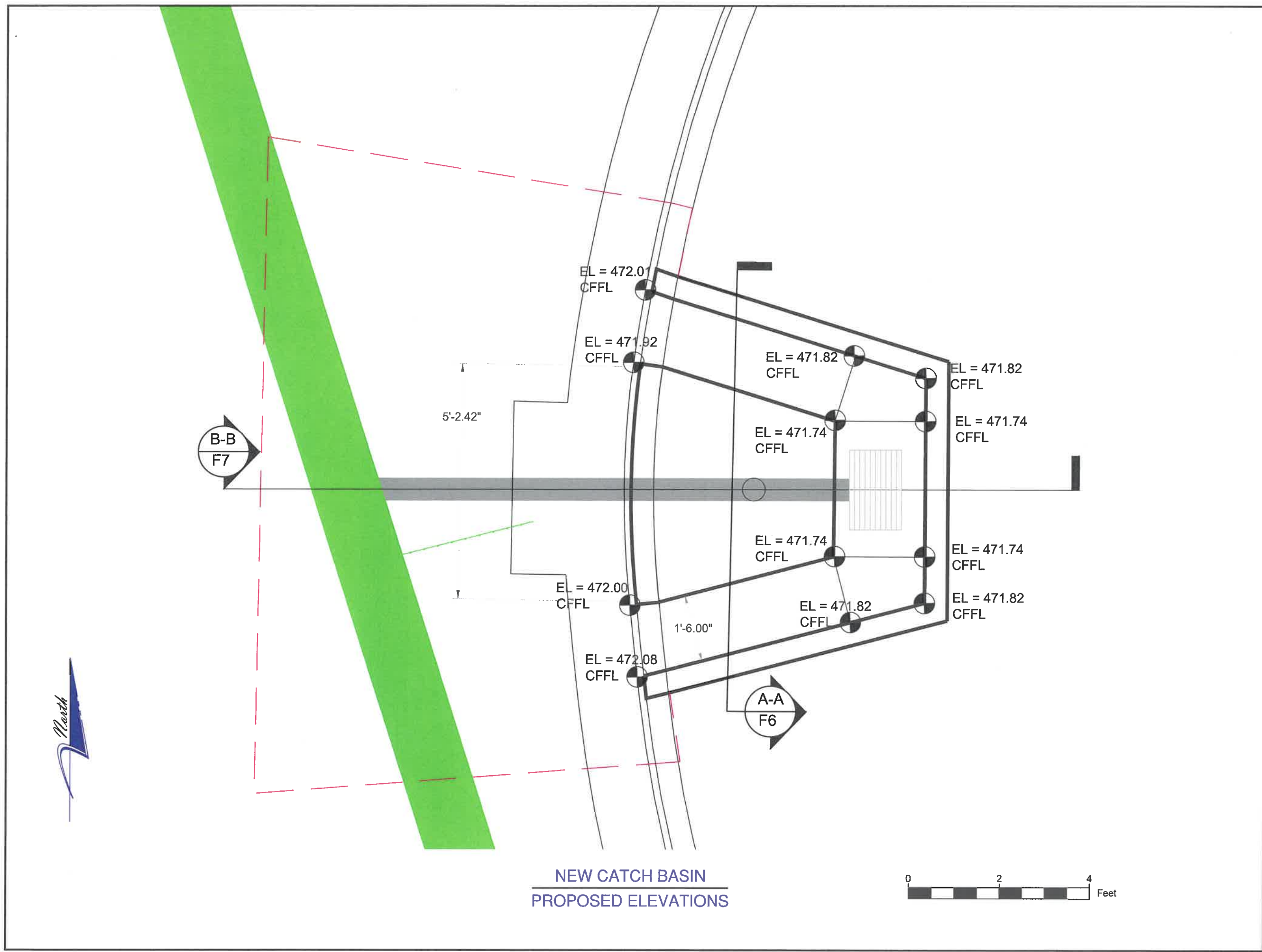
SCALE: 1:3	SHEET F4 OF 12
DRAWN BY: H. MADLAND	
DESIGNED BY: J. JONES	
CHECKED BY: J. PASCHALL	

No.	Revision/Issue	Date

NOTE:

UTILITY LOCATIONS ARE APPROXIMATE
DO NOT
 SCALE OR LOCATE UTILITY LINES OR MAINS
 FROM THESE DRAWINGS
 CALL FOR UTILITY LOCATES
 811 or (1-800-332-2344)

THE CONTRACTOR SHALL BE RESPONSIBLE
 FOR DETERMINING UTILITY LOCATIONS PRIOR TO
 BEGINNING OF CONSTRUCTION.
 THESE PLANS MAY NOT SHOW ALL UTILITIES OR
 THE CORRECT LOCATIONS.



**Project P21121
 REGIONAL FUEL FACILITY
 UPGRADE**

City of Springfield
 PUBLIC WORKS / ENGINEERING
 225 FIFTH STREET, SPRINGFIELD, OR 97477
 PHONE (541) 726-3753 FAX (541) 726-3888
 INTERNET www.springfield-or.gov



EXP. DATE: 6/30/2021

ELEVATION PLAN

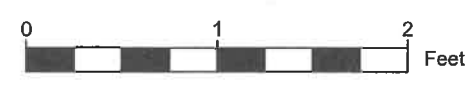
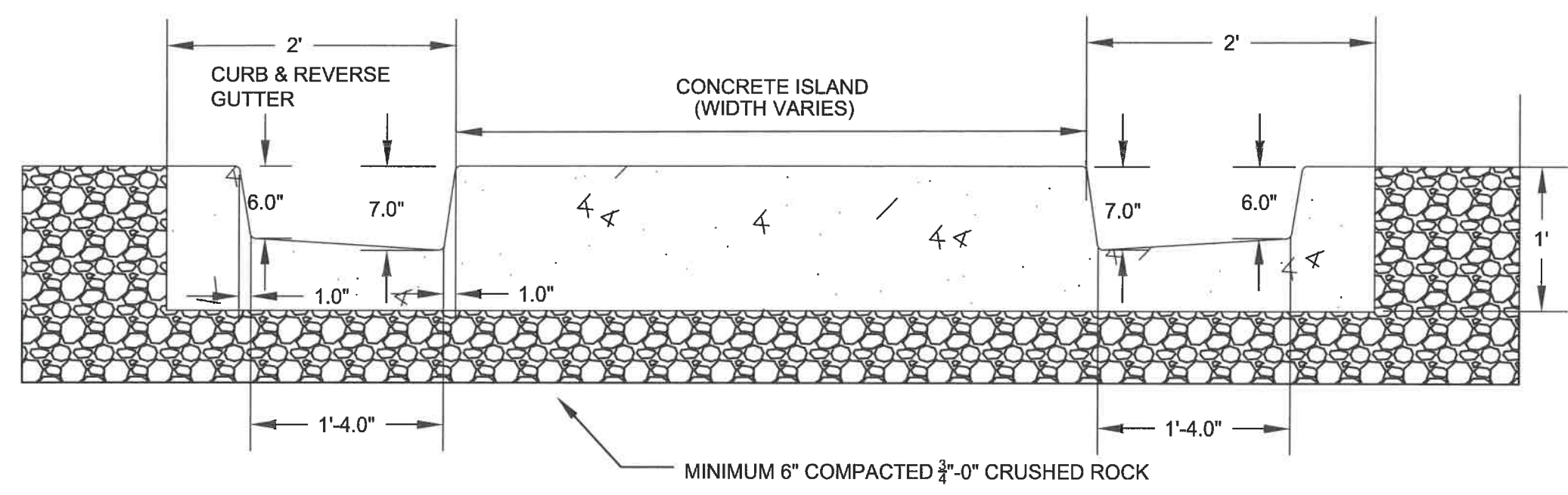
SCALE: 1:2	SHEET F5 OF 12
DRAWN BY: H. MADLAND	
DESIGNED BY: J. JONES	
CHECKED BY: J. PASCHALL	

No.	Revision/Issue	Date

NOTE:

UTILITY LOCATIONS ARE APPROXIMATE
DO NOT
 SCALE OR LOCATE UTILITY LINES OR MAINS
 FROM THESE DRAWINGS
 CALL FOR UTILITY LOCATES
 811 or (1-800-332-2344)

THE CONTRACTOR SHALL BE RESPONSIBLE
 FOR DETERMINING UTILITY LOCATIONS PRIOR TO
 BEGINNING OF CONSTRUCTION.
 THESE PLANS MAY NOT SHOW ALL UTILITIES OR
 THE CORRECT LOCATIONS.



A-A SECTION A-A
F6

Project P21121
REGIONAL FUEL FACILITY
UPGRADE

City of Springfield
PUBLIC WORKS / ENGINEERING
 225 FIFTH STREET, SPRINGFIELD, OR 97477
 PHONE (541) 726-3753 FAX (541) 726-3689
 INTERNET www.springfield-or.gov



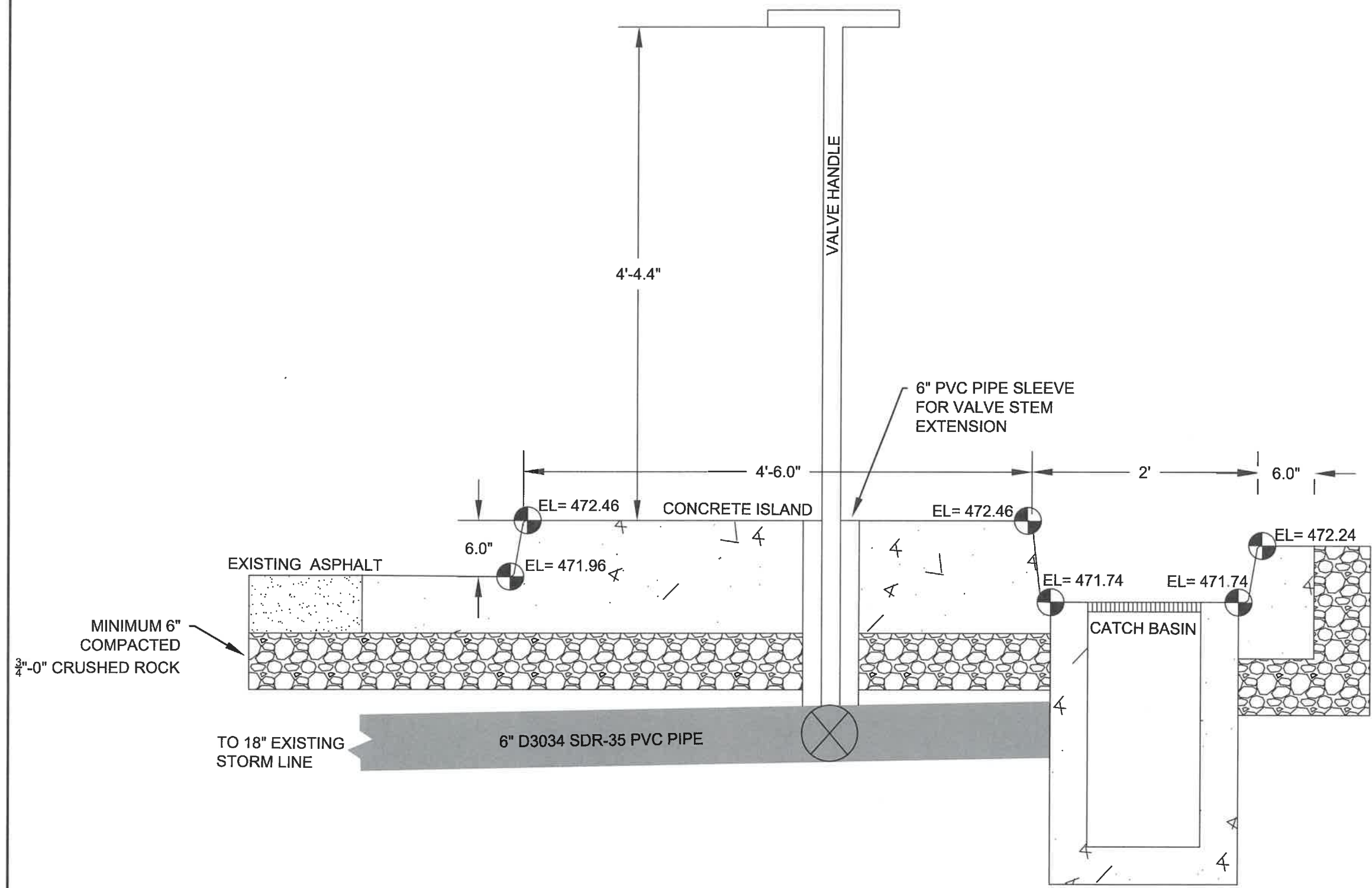
EXP. DATE: 6/30/2021

TYPICAL SECTIONS

SCALE: 1:1	SHEET F6 OF 12
DRAWN BY: H. MADLAND	
DESIGNED BY: J. JONES	
CHECKED BY: J. PASCHALL	

No.	Revision/Issue	Date

NOTE:
 UTILITY LOCATIONS ARE APPROXIMATE
DO NOT
 SCALE OR LOCATE UTILITY LINES OR MAINS
 FROM THESE DRAWINGS
 CALL FOR UTILITY LOCATES
 811 or (1-800-332-2344)
 THE CONTRACTOR SHALL BE RESPONSIBLE
 FOR DETERMINING UTILITY LOCATIONS PRIOR TO
 BEGINNING OF CONSTRUCTION.
 THESE PLANS MAY NOT SHOW ALL UTILITIES OR
 THE CORRECT LOCATIONS.



**Project P21121
 REGIONAL FUEL FACILITY
 UPGRADE**

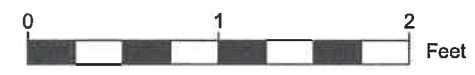
City of Springfield
 PUBLIC WORKS / ENGINEERING
 225 FIFTH STREET, SPRINGFIELD, OR 97477
 PHONE (541) 726-3753 FAX (541) 726-3669
 INTERNET www.springfield-or.gov



EXP. DATE: 6/30/2021

TYPICAL SECTIONS

SCALE: 1:1
 SHEET F7 OF 12
 DRAWN BY: H. MADLAND
 DESIGNED BY: J. JONES
 CHECKED BY: J. PASCHALL



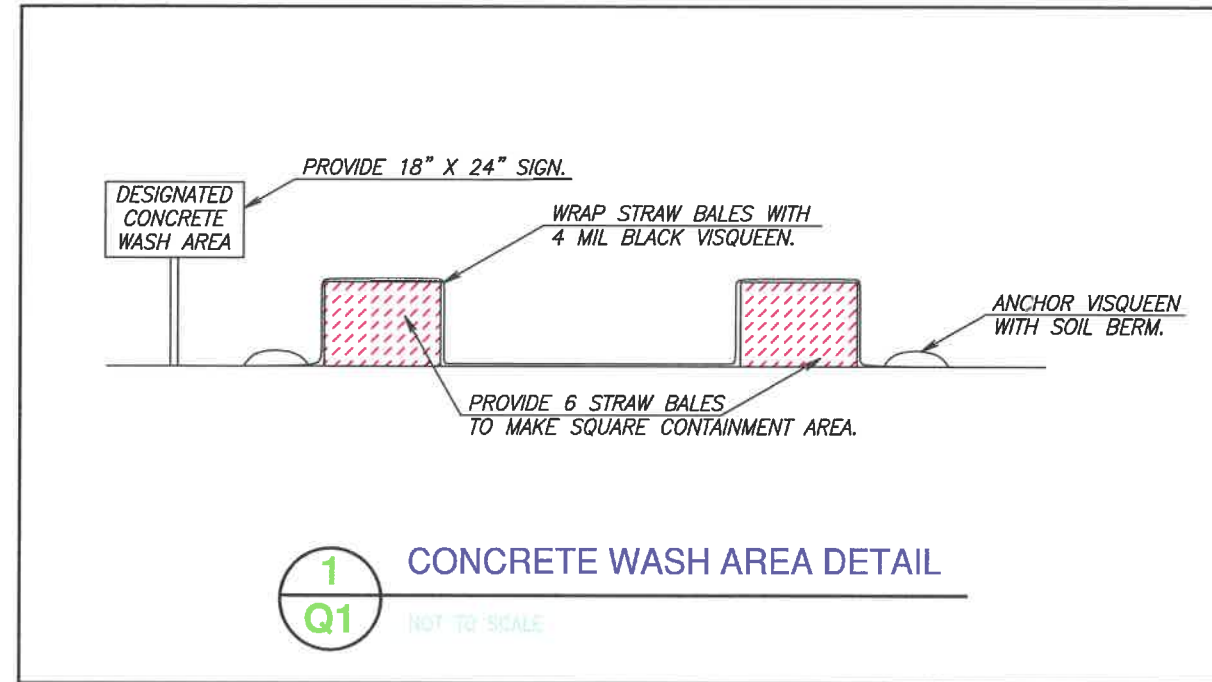
B-B SECTION B-B
F7

NOTES:

1. PLACE INLET/CATCH BASIN PROTECTION AT EXISTING FIXTURES (SEE DETAILS ON SHEET Q2.)

GENERAL NOTES:

1. CONCRETE WASHOUTS ARE NOT PROVIDED ON THIS PROJECT
2. SAW CUTTING SLURRY IS TO BE VACUMED
3. ANY AREAS OF EXPOSED SOILS, INCLUDING ROADWAY EMBANKMENTS, THAT WILL NOT BE DISTURBED FOR TWO DAYS DURING THE WET SEASON (OCTOBER 1 TO APRIL 30) OR SEVEN DAYS DURING THE DRY SEASON (MAY 1 TO SEPTEMBER 30) SHALL BE IMMEDIATELY STABILIZED WITH AN APPROVED ESC METHOD (SEEDING & MULCHING WITH STRAW, BARK, COMPOST, OR PLASTIC COVERING, ETC.).



EROSION CONTROL STANDARD NOTES:

- A. Approval of this Erosion and Sedimentation Control Plan (ESCP) does not constitute an approval of permanent road or drainage design (e.g., size and location of roads, pipes, restrictors, channels, retention facilities, utilities, etc.).
- B. Approval of this ESCP does not relieve the permit holder and or the contractor from all other permitting requirements. Prior to beginning construction activities, all other necessary approvals shall be obtained.
- C. An inspection of the erosion control measures by City LDAP staff is required prior to any ground disturbance on the site.
- D. The erosion and sediment control measures shown on the plan are the minimum requirements for anticipated site conditions. During the construction period, these measures shall be upgraded as needed for unexpected storm events and to ensure that sediment and sediment-laden water does not leave the site.
- E. The implementation of the ESCP and the construction, maintenance, replacement, and upgrading of the erosion and sediment control measures is the responsibility of the permit holder and or the contractor until all construction is completed and accepted by the City and vegetation/landscaping is established per the required warranty period.
- F. In the event the ESC facilities identified on the ESCP are not functioning properly, the contractor is responsible for immediately implementing changes to the ESCP as directed by the ESCP engineer or his inspector. The engineer, his inspector or the City may stop all construction activity on site until the erosion problem is corrected and all ESC facilities are functioning properly. If the contractor does not immediately implement changes to the ESCP identified by the ESCP engineer or his inspector, the City may implement the necessary changes and require payment from the contractor prior to project acceptance by the City.
- G. The boundaries of the clearing limits shown on this plan shall be clearly flagged in the field by the engineer prior to construction. During the construction period, no disturbance beyond the flagged clearing limits shall be permitted. The flagging shall be maintained by the permit holder and or the contractor for the duration of construction.
- H. The erosion and sediment control measures on active sites shall be inspected and maintained daily and within the 24 hours after any storm event of greater than 0.5 inches of rain per 24 hour period. Measures shall be inspected by the permit holder and or the contractor after each rainfall and at least daily during prolonged rainfall. Any required repairs or adjustments shall be made immediately. The erosion and sediment control measures on inactive sites shall be inspected a minimum of once every two (2) weeks or within 48 hours following a storm event. Written records shall be kept of weekly reviews of the ESC facilities during the wet season (October 1 to April 30) and of monthly reviews during the dry season (May 1 to September 30).
- I. All erosion and sediment control measures shall be protected from damage at all times. Control measures shall remain in place until permanent or temporary re-vegetation has been stabilized. Any measure that is damaged or destroyed shall be repaired or replaced immediately.
- J. Any areas of exposed soils, including roadway embankments, that will not be disturbed for two days during the wet season (October 1 to April 30) or seven days during the dry season (May 1 to September 30) shall be immediately stabilized with an approved ESC method (seeding & mulching with straw, bark, compost, or plastic covering, etc.).
- K. A supply of materials necessary to meet compliance and implement the LDAP or other best management erosion practices under all weather conditions shall be maintained at all times on the construction site.
- L. No hazardous substances, such as paints, thinners, fuels and other chemicals shall be released onto the site, adjacent properties, or into water features, the City's storm water system, or related natural resources.
- M. Street sweeping shall be performed as needed or when directed by the City inspector to ensure public right-of-ways are kept clean and free of debris. Street flushing is prohibited.
- N. When trucking saturated soils from the site, either water-tight trucks shall be used or loads shall be drained on site until dripping has been reduced to no more than one gallon per hour. Sediment laden water will not be allowed to enter the storm water system
- O. Extracted ground water from excavated trenches shall be disposed of in a suitable manner without damage to adjacent property, public storm water system, water features, and related natural resources. Approval of a dewatering system does not guarantee that it will meet compliance or be acceptable for use in all situations. Modifications to the dewatering system will be required if compliance can not be met. At no time will sediment laden water be allowed to leave the construction site.
- P. At no time shall more than one foot of sediment be allowed to accumulate within a catch basin. All catch basins and conveyance lines shall be cleaned prior to paving. The cleaning operation shall not flush sediment laden water into the downstream system.
- Q. Any required stabilized construction entrances and roads shall be installed at the beginning of construction and maintained for the duration of the project. Additional measures, such as wash pads, may be required to ensure that all paved areas are kept clean for the duration of the project.
- R. Any permanent flow control facility used as a temporary settling basin shall be modified with the necessary erosion control measures and shall provide adequate storage capacity.
- S. Where straw mulch for temporary erosion control is required, it shall be applied at a minimum thickness of two to three inches.
- T. In preparation of the wet season, all disturbed areas shall be reviewed to identify which ones can be seeded in preparation for the winter rains. A sketch map of those areas to be seeded and those areas to remain uncovered shall be submitted to the City by September 15. The City can require seeding of additional areas in order to protect surface waters, adjacent properties, or drainage facilities. Disturbed areas identified for seeding shall be seeded prior to the beginning of the wet season (October 1).

No.	Revision/Issue	Date

NOTE:

UTILITY LOCATIONS ARE APPROXIMATE
DO NOT
SCALE OR LOCATE UTILITY LINES OR MAINS
FROM THESE DRAWINGS
CALL FOR UTILITY LOCATES
811 or (1-800-332-2344)
THE CONTRACTOR SHALL BE RESPONSIBLE
FOR DETERMINING UTILITY LOCATIONS PRIOR TO
BEGINNING OF CONSTRUCTION.
THESE PLANS MAY NOT SHOW ALL UTILITIES OR
THE CORRECT LOCATIONS.

**Project P21121
REGIONAL FUEL FACILITY
UPGRADE**

City of Springfield
PUBLIC WORKS / ENGINEERING
225 FIFTH STREET, SPRINGFIELD, OR 97477
PHONE (541) 726-5753 FAX (541) 726-3689
INTERNET www.springfield.or.gov



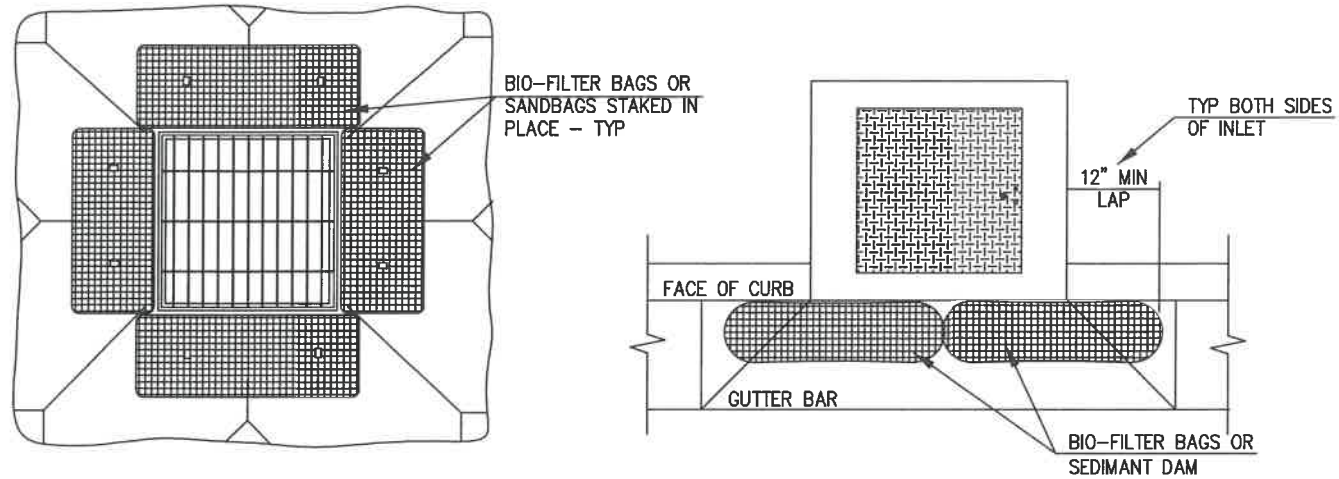
EXP. DATE: 6/30/2021

EROSION & SEDIMENT CONTROL NOTES

NO SCALE

DRAWN BY: H. MADLAND
DESIGNED BY: J. JONES
CHECKED BY: J. PASCHALL

SHEET
Q1
OF
12

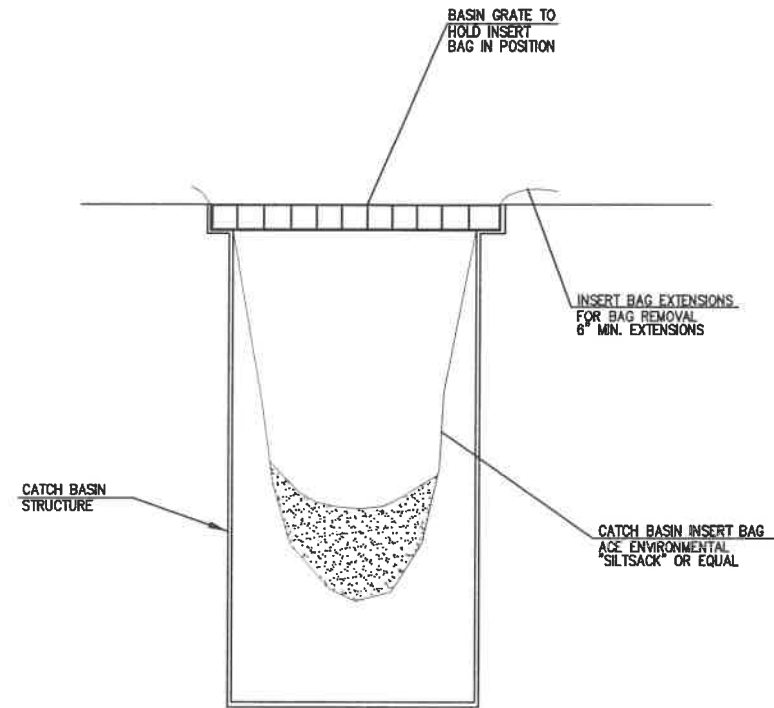


NOTES
 1. PRIOR TO 1st PAVEMENT LIFT, REMOVE BIO-BAG/SANDBAG BARRIERS AND INSTALL BASIN INSERT BAG OR CURB INLET SEDIMENT DAM AT ALL INLET STRUCTURES.

1
Q2

DRAINAGE INLET STRUCTURE PROTECTION

NOT TO SCALE



2
Q2

CATCH BASIN INSERT BAG

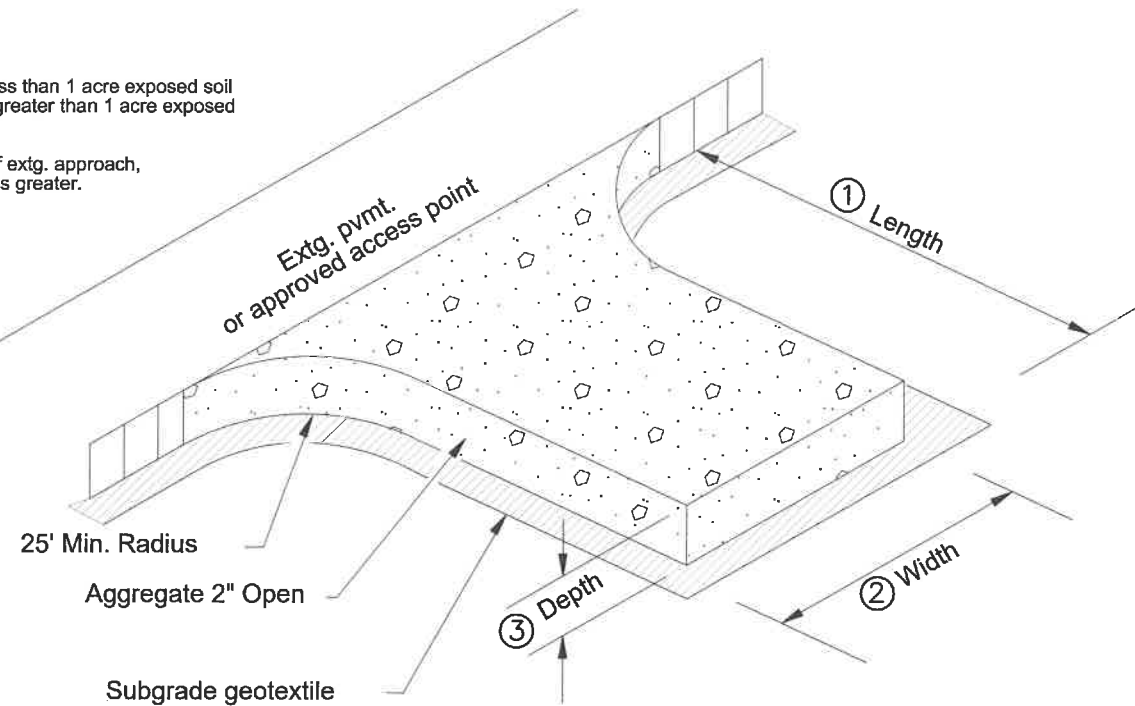
NOT TO SCALE



INLET PROTECTION

Notes:

- ① Length: 50' min. - for less than 1 acre exposed soil
100' min. - for greater than 1 acre exposed soil
- ② Width: 20' - or width of extg. approach, whichever is greater.
- ③ Depth: 8" min



3
Q2

CONSTRUCTION ENTRANCE

NOT TO SCALE

No.	Revision/Issue	Date

NOTE:

UTILITY LOCATIONS ARE APPROXIMATE
DO NOT
 SCALE OR LOCATE UTILITY LINES OR MAINS
 FROM THESE DRAWINGS
 CALL FOR UTILITY LOCATES
 811 or (1-800-332-2344)
 THE CONTRACTOR SHALL BE RESPONSIBLE FOR DETERMINING UTILITY LOCATIONS PRIOR TO BEGINNING OF CONSTRUCTION. THESE PLANS MAY NOT SHOW ALL UTILITIES OR THE CORRECT LOCATIONS.

**Project P21121
 REGIONAL FUEL FACILITY
 UPGRADE**

City of Springfield
PUBLIC WORKS / ENGINEERING



225 FIFTH STREET, SPRINGFIELD, OR 97477
 PHONE (541) 726-3753 FAX (541) 726-3689
 INTERNET www.springfield-or.gov



EXP. DATE: 6/30/2021

EROSION & SEDIMENT CONTROL DETAILS

NO SCALE

DRAWN BY: H. MADLAND
 DESIGNED BY: J. JONES
 CHECKED BY: J. PASCHALL

**SHEET
 Q2
 OF
 12**