

# Springfield Comprehensive Plan - Illustrative Overview

Refinement Plan Areas\*

Urban Growth Boundary

Overlays  
 Nodal Development Area  
 Willamette Greenway

## Comprehensive Plan Designations\*\*

- |                            |                                 |                          |                                 |
|----------------------------|---------------------------------|--------------------------|---------------------------------|
| Low Density Residential    | Major Retail Center             | Heavy Industrial         | Mixed Use (general)**           |
| Medium Density Residential | Commercial Mixed Use            | Special Heavy Industrial | Public Land & Open Space        |
| High Density Residential   | Commercial/Industrial Mixed Use | Employment Mixed Use     | Natural Resource                |
| Residential Mixed Use      | LMI/CC Mixed Use                | Booth-Kelly Mixed Use    | Sand & Gravel                   |
| Neighborhood Commercial    | Light Medium Industrial (LMI)   | General Office           | Urban Holding Area - Employment |
| Community Commercial (CC)  | Campus Industrial               | Office Mixed Use         |                                 |

\* Please click on Refinement Plan label to view the plan designations and document specific to that area.

\*\* Please note that some similar Mixed Use designations are aggregated to simplify readability. Consult the Comprehensive Plan web map for precise designations: [LINK](#)

Gateway

Q Street

Mid-Springfield

East Kelly Butte

Glenwood

East Main

Downtown



0 1/4 1/2 1 Mi.



There are no warranties that accompany this product. Users assume all responsibility for any loss or damage arising from any error, omission, or positional inaccuracy of this product.

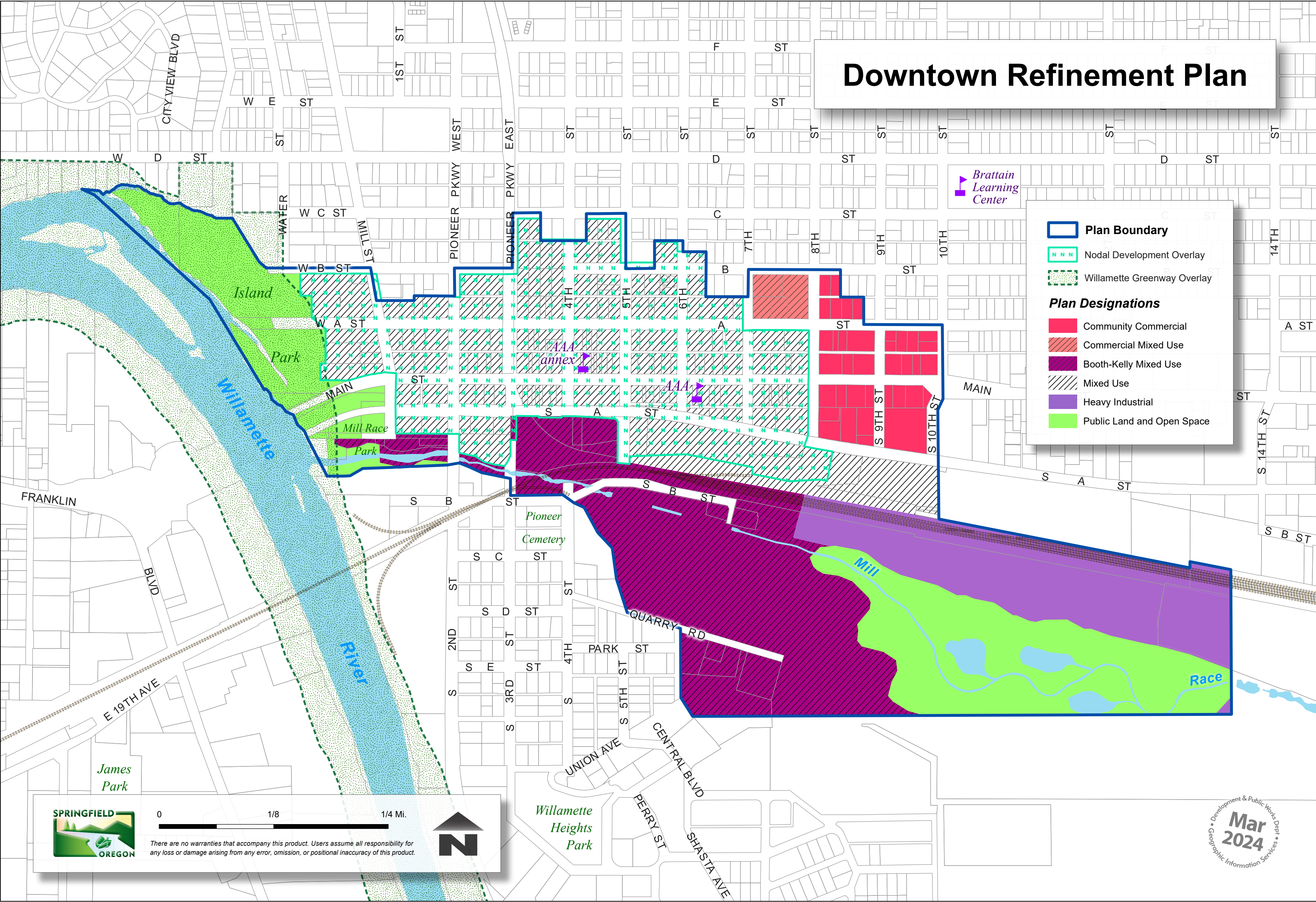
Development & Public Works Dept.  
 Mar 2024  
 Geographic Information Services

# Downtown Refinement Plan

**Plan Boundary**

**Plan Designations**

- Community Commercial
- Commercial Mixed Use
- Booth-Kelly Mixed Use
- Mixed Use
- Heavy Industrial
- Public Land and Open Space



0 1/8 1/4 Mi.

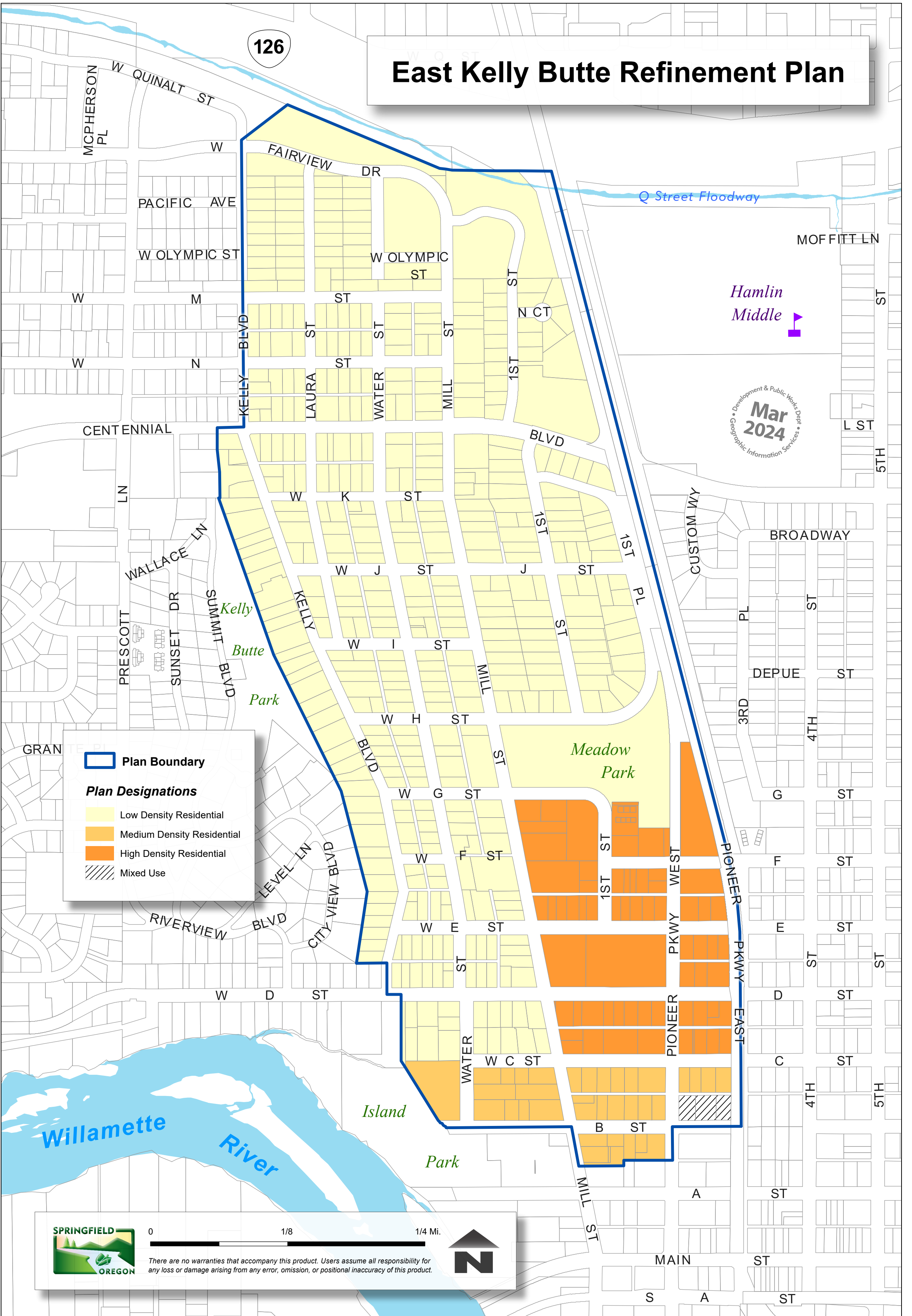
There are no warranties that accompany this product. Users assume all responsibility for any loss or damage arising from any error, omission, or positional inaccuracy of this product.



Development & Public Works Dept  
**Mar 2024**  
 Geographic Information Services

# East Kelly Butte Refinement Plan

126



Plan Boundary

### Plan Designations

- Low Density Residential
- Medium Density Residential
- High Density Residential
- Mixed Use

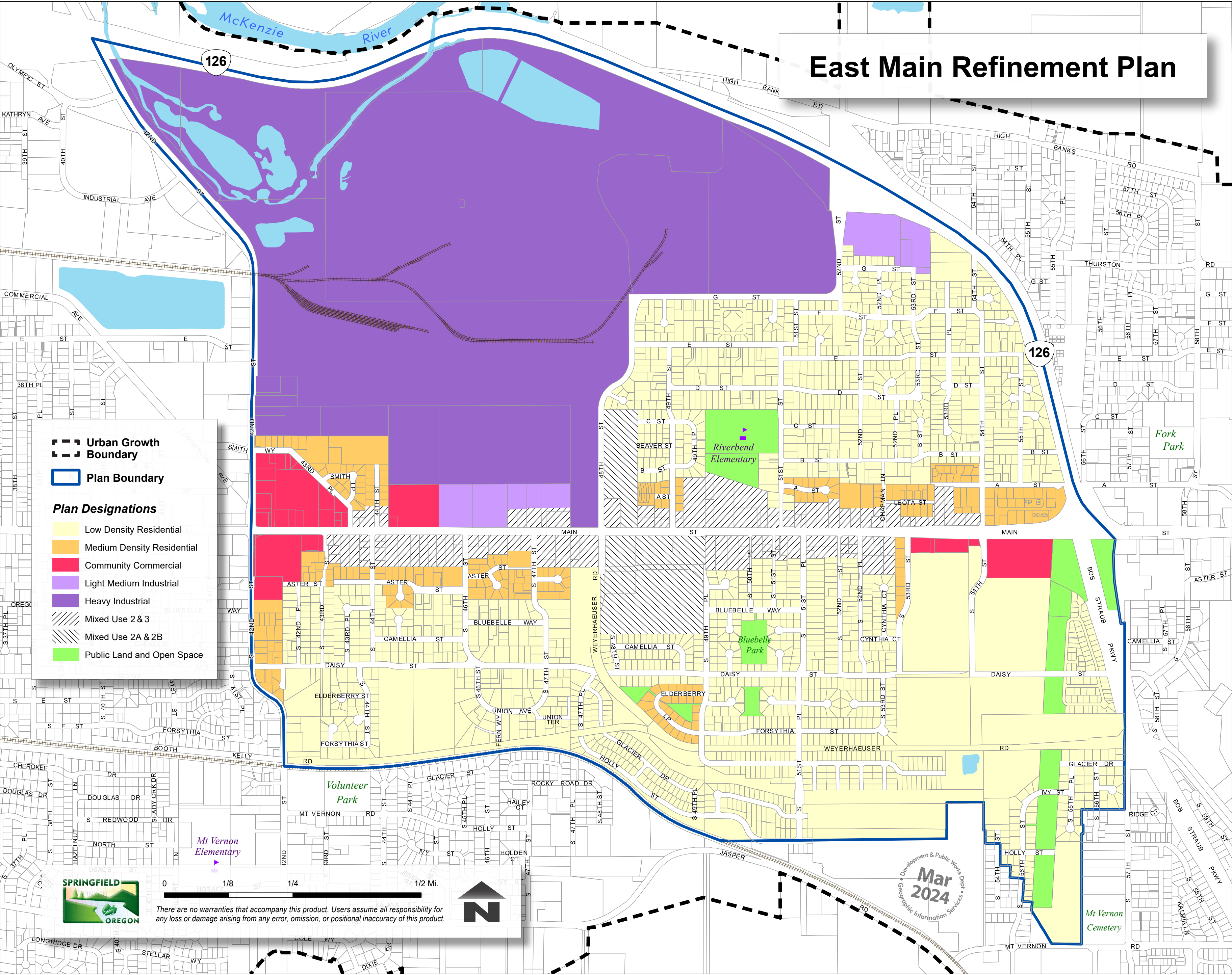


0 1/8 1/4 Mi.

There are no warranties that accompany this product. Users assume all responsibility for any loss or damage arising from any error, omission, or positional inaccuracy of this product.



# East Main Refinement Plan



**Urban Growth Boundary**

**Plan Boundary**

**Plan Designations**

- Low Density Residential
- Medium Density Residential
- Community Commercial
- Light Medium Industrial
- Heavy Industrial
- Mixed Use 2 & 3
- Mixed Use 2A & 2B
- Public Land and Open Space



0 1/8 1/4 1/2 Mi.

There are no warranties that accompany this product. Users assume all responsibility for any loss or damage arising from any error, omission, or positional inaccuracy of this product.



Mar 2024  
Development & Public Works Dept.  
Geographic Information Services

# Gateway Refinement Plan

Development & Public Works Dept.  
**Mar 2024**  
 Geographic Information Services

**Legend**

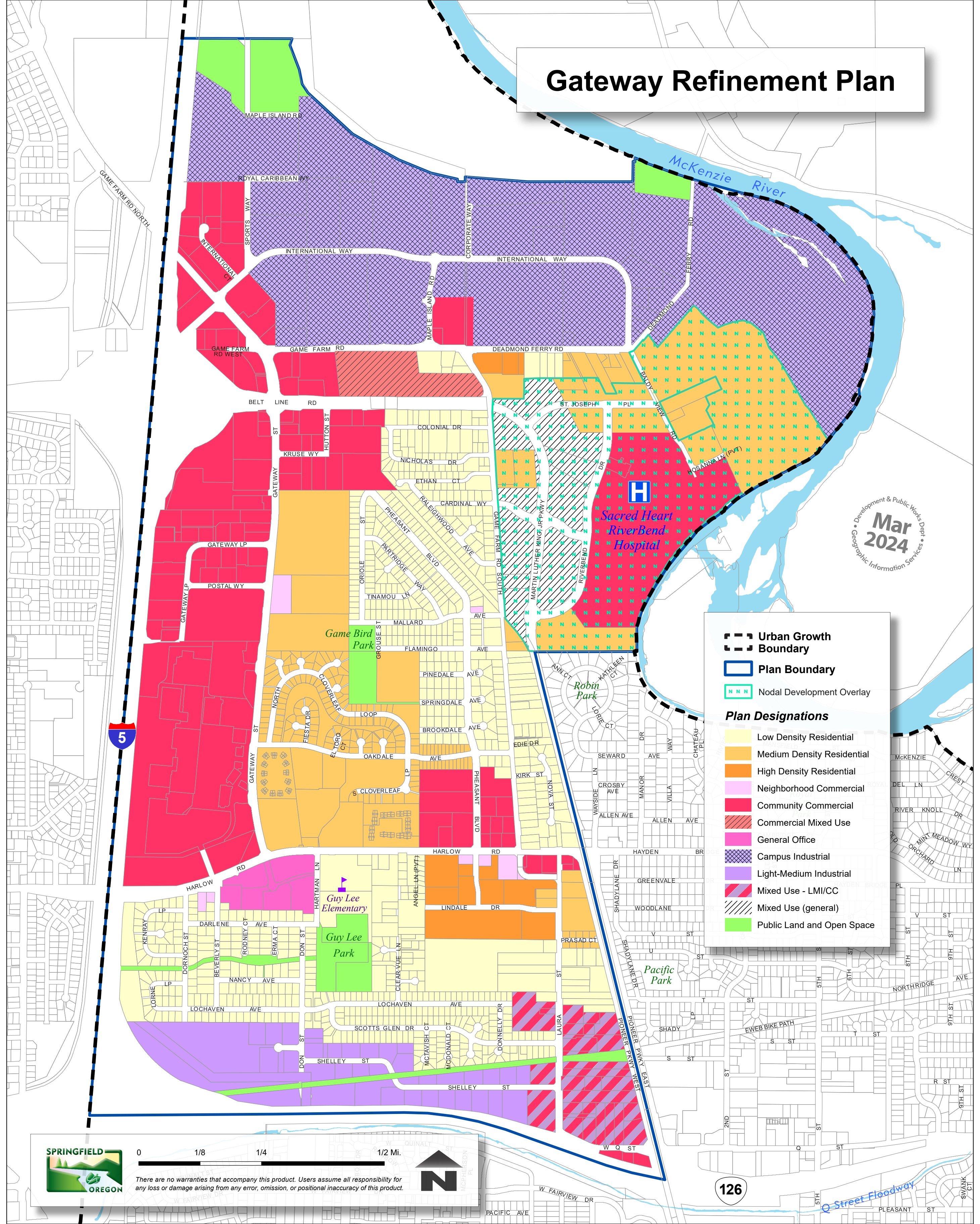
- Urban Growth Boundary
- Plan Boundary
- Nodal Development Overlay

**Plan Designations**

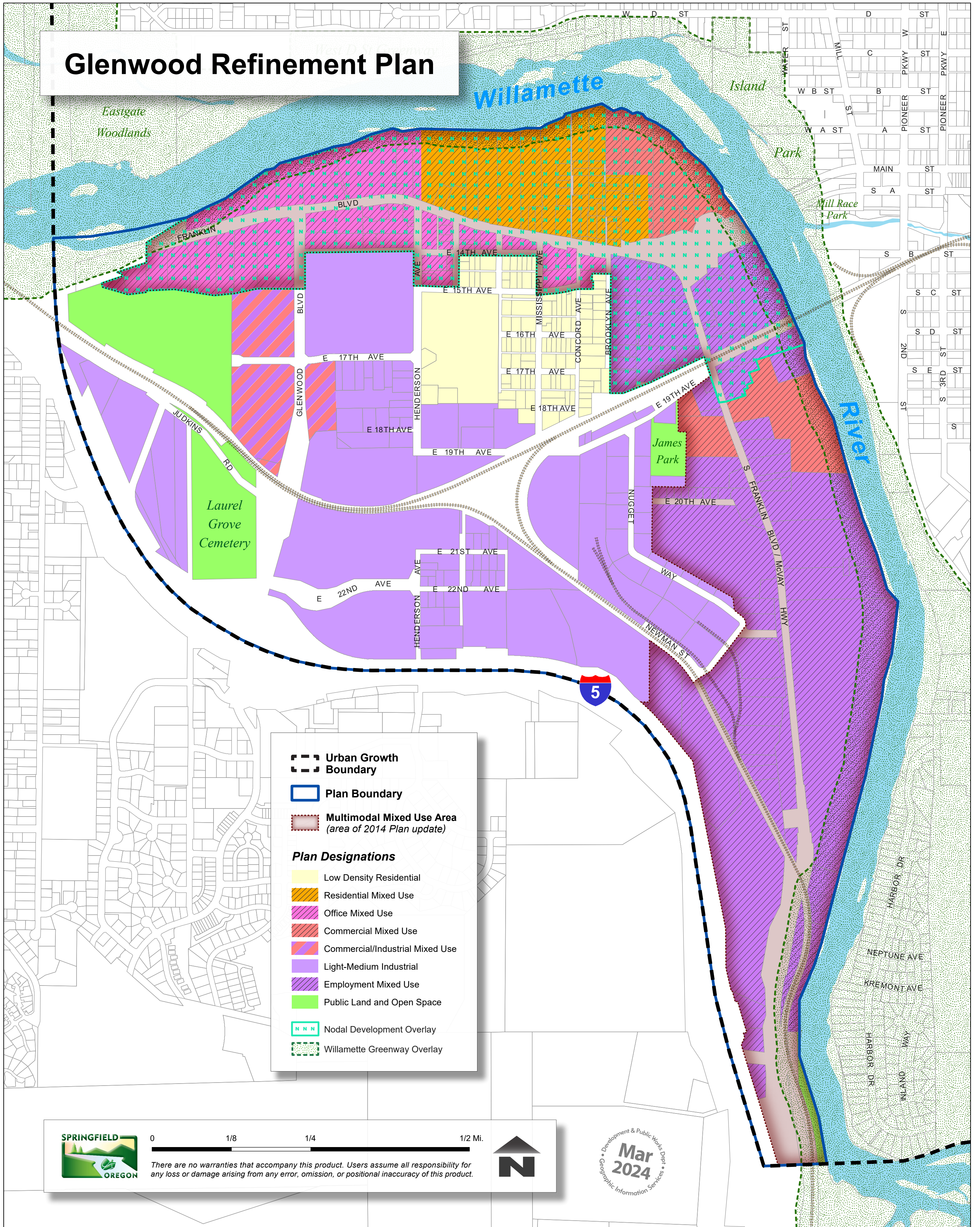
- Low Density Residential
- Medium Density Residential
- High Density Residential
- Neighborhood Commercial
- Community Commercial
- Commercial Mixed Use
- General Office
- Campus Industrial
- Light-Medium Industrial
- Mixed Use - LMI/CC
- Mixed Use (general)
- Public Land and Open Space



There are no warranties that accompany this product. Users assume all responsibility for any loss or damage arising from any error, omission, or positional inaccuracy of this product.



# Glenwood Refinement Plan



- Urban Growth Boundary
  - Plan Boundary
  - Multimodal Mixed Use Area (area of 2014 Plan update)
- Plan Designations**
- Low Density Residential
  - Residential Mixed Use
  - Office Mixed Use
  - Commercial Mixed Use
  - Commercial/Industrial Mixed Use
  - Light-Medium Industrial
  - Employment Mixed Use
  - Public Land and Open Space
  - Nodal Development Overlay
  - Willamette Greenway Overlay



0 1/8 1/4 1/2 Mi.

There are no warranties that accompany this product. Users assume all responsibility for any loss or damage arising from any error, omission, or positional inaccuracy of this product.



Development & Public Works Dept.  
**Mar 2024**  
 Geographic Information Services

# Mid-Springfield Refinement Plan

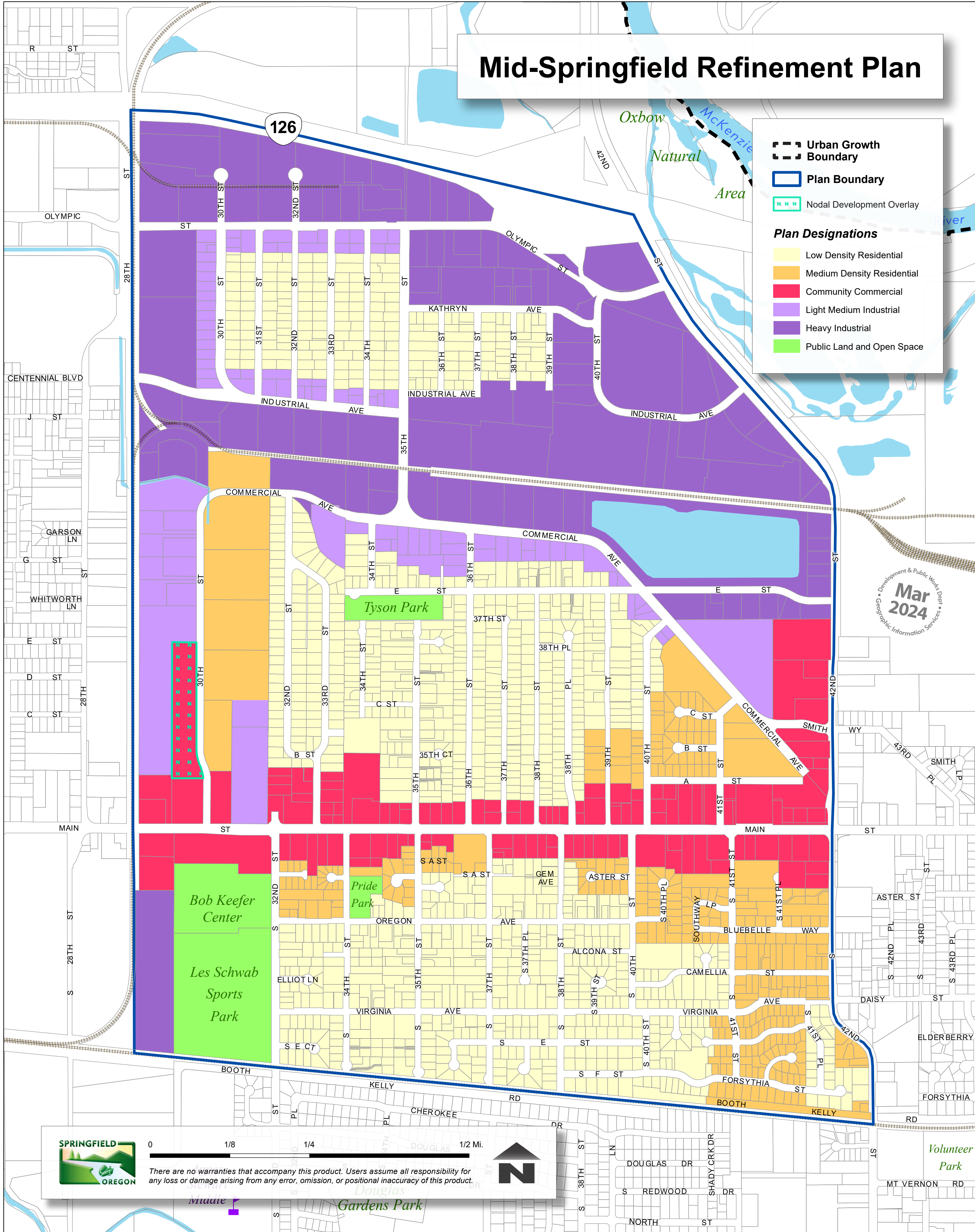
**Urban Growth Boundary**  
 [Dashed line symbol] Urban Growth Boundary

**Plan Boundary**  
 [Solid blue line symbol] Plan Boundary

**Nodal Development Overlay**  
 [Green dashed line symbol] Nodal Development Overlay

**Plan Designations**

- [Yellow box] Low Density Residential
- [Orange box] Medium Density Residential
- [Red box] Community Commercial
- [Light Purple box] Light Medium Industrial
- [Dark Purple box] Heavy Industrial
- [Green box] Public Land and Open Space



Development & Public Works Dept.  
 Geographic Information Services  
**Mar 2024**



0 1/8 1/4 1/2 Mi.

There are no warranties that accompany this product. Users assume all responsibility for any loss or damage arising from any error, omission, or positional inaccuracy of this product.



Volunteer Park

Gardens Park

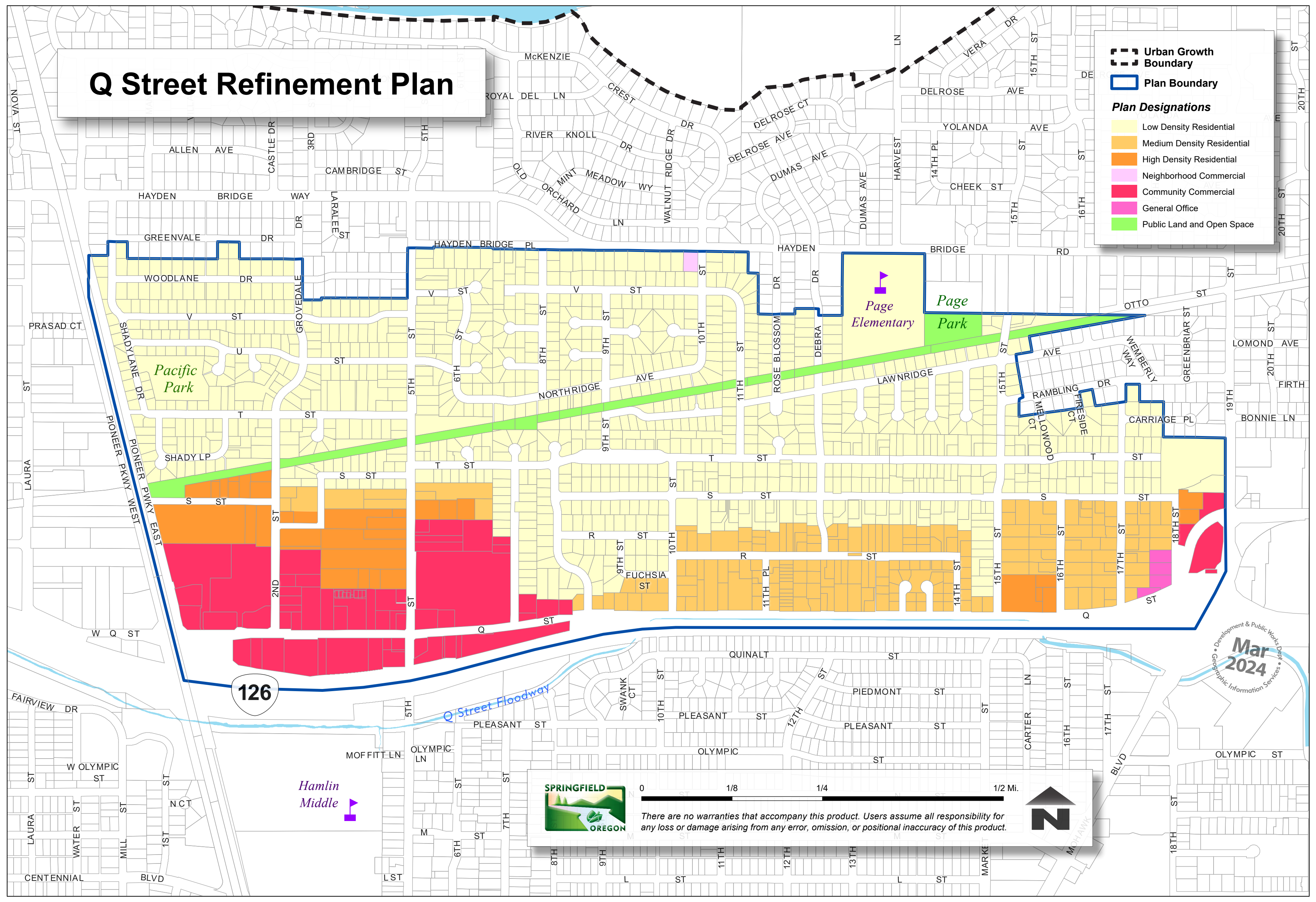
# Q Street Refinement Plan

**Urban Growth Boundary**

**Plan Boundary**

**Plan Designations**

- Low Density Residential
- Medium Density Residential
- High Density Residential
- Neighborhood Commercial
- Community Commercial
- General Office
- Public Land and Open Space



126

Street Floodway

Hamlin Middle

Page Elementary

Page Park

Pacific Park



0 1/8 1/4 1/2 Mi.

There are no warranties that accompany this product. Users assume all responsibility for any loss or damage arising from any error, omission, or positional inaccuracy of this product.



Mar 2024

Development & Public Works Dept.  
Geographic Information Services



# West Springfield Vicinity

June 2023  
Development & Public Works Dept. • Geographic Information Services

\* CLICK HERE TO VIEW THE GATEWAY REFINEMENT PLAN DIAGRAM

\* CLICK HERE TO VIEW THE O STREET REFINEMENT PLAN DIAGRAM

\* CLICK HERE TO VIEW THE EAST KELLY BUTTE REFINEMENT PLAN DIAGRAM


\* CLICK HERE TO VIEW THE GLENWOOD REFINEMENT PLAN DIAGRAM

 Urban Growth Boundary

 Refinement Plan Boundary\*


 Willamette Greenway overlay

### Plan Designations

 Low Density Residential

 Medium Density Residential

 Community Commercial

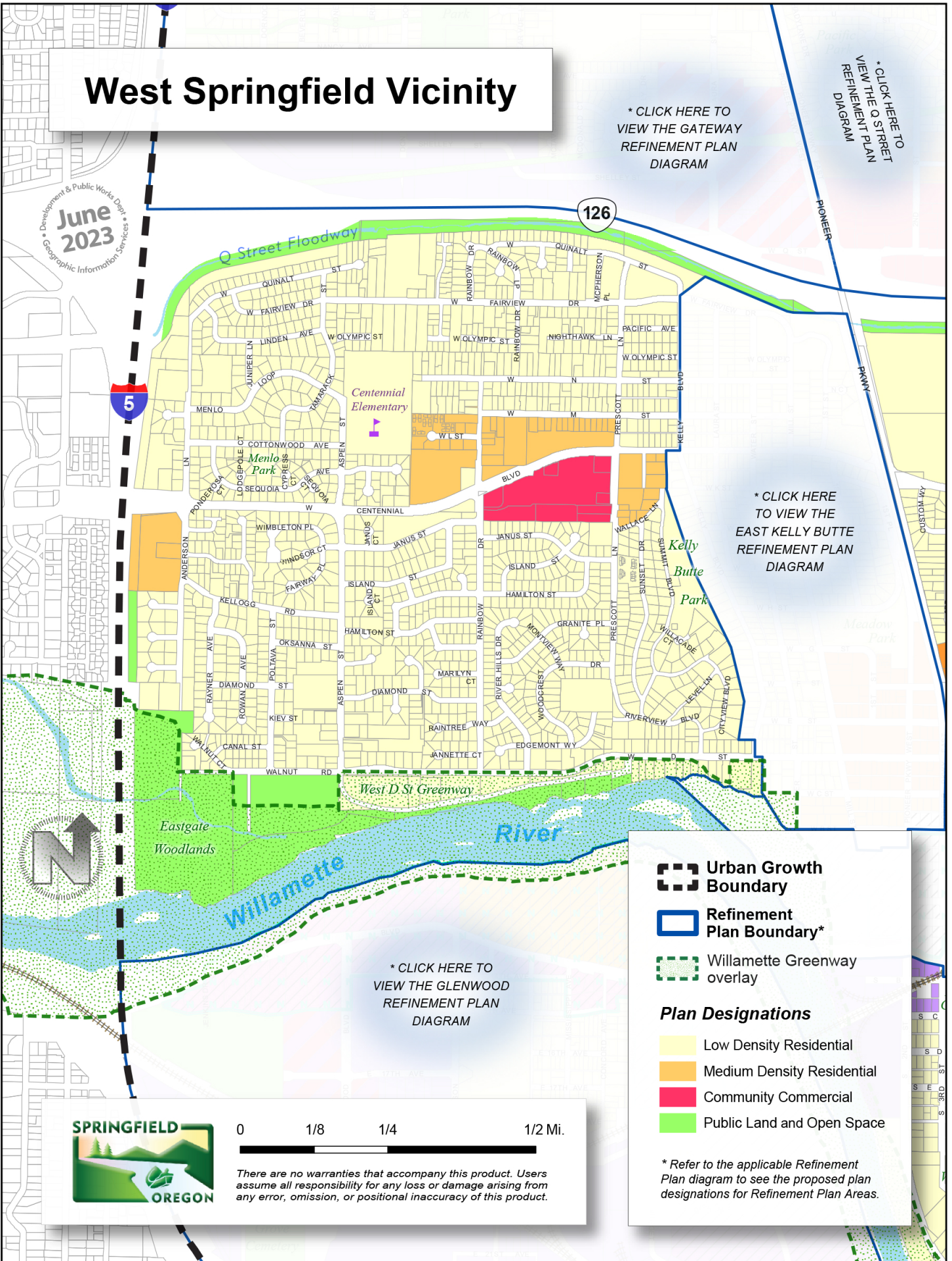
 Public Land and Open Space

\* Refer to the applicable Refinement Plan diagram to see the proposed plan designations for Refinement Plan Areas.



0 1/8 1/4 1/2 Mi.

There are no warranties that accompany this product. Users assume all responsibility for any loss or damage arising from any error, omission, or positional inaccuracy of this product.



# East-Central Springfield Vicinity

Development & Public Works Dept  
 June 2023  
 Geographic Information Services

Urban Growth Boundary

Refinement Plan Boundary\*

Willamette Greenway overlay

**Plan Designations**

- Low Density Residential
- Medium Density Residential
- High Density Residential
- Community Commercial
- Light Medium Industrial
- Heavy Industrial
- Sand & Gravel
- Public Land and Open Space

\* Refer to the applicable Refinement Plan diagram to see the proposed plan designations for Refinement Plan Areas.

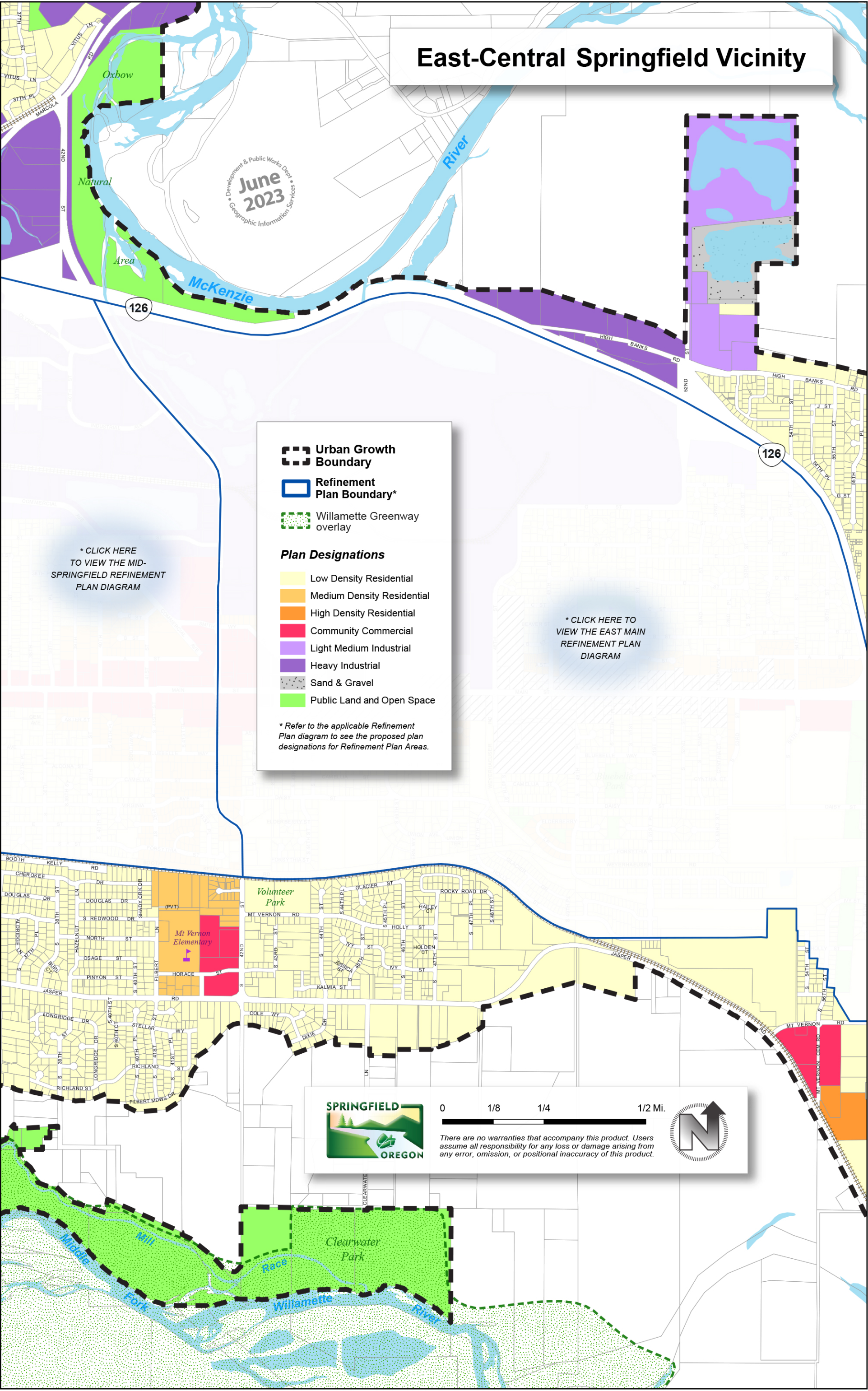
[\\* CLICK HERE TO VIEW THE MID-SPRINGFIELD REFINEMENT PLAN DIAGRAM](#)

[\\* CLICK HERE TO VIEW THE EAST MAIN REFINEMENT PLAN DIAGRAM](#)



0 1/8 1/4 1/2 Mi.

There are no warranties that accompany this product. Users assume all responsibility for any loss or damage arising from any error, omission, or positional inaccuracy of this product.



# Hayden Bridge/Mohawk Vicinity

\* CLICK HERE TO VIEW THE GATEWAY PLAN REFINEMENT PLAN DIAGRAM

\* CLICK HERE TO VIEW THE Q STREET REFINEMENT PLAN DIAGRAM

**Plan Designations**

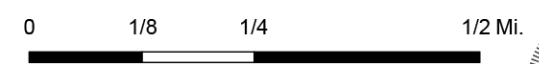
- Low Density Residential
- Medium Density Residential
- High Density Residential
- Community Commercial
- Major Retail Commercial
- Mixed Use
- Light Medium Industrial
- Heavy Industrial
- Public Land and Open Space

- Urban Growth Boundary
- Refinement Plan Boundary\*
- Nodal Development overlay

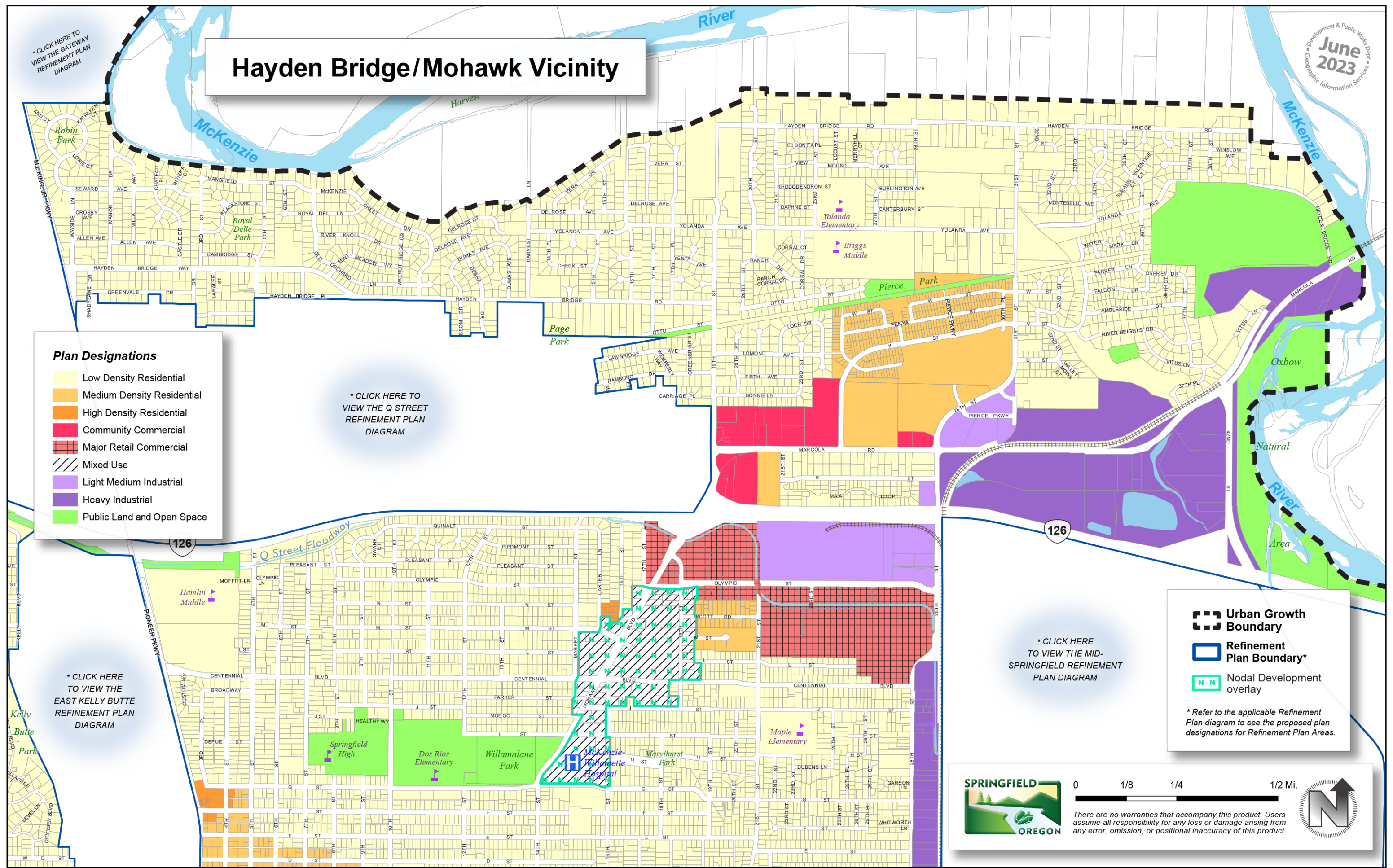
\* Refer to the applicable Refinement Plan diagram to see the proposed plan designations for Refinement Plan Areas.

\* CLICK HERE TO VIEW THE MID-SPRINGFIELD REFINEMENT PLAN DIAGRAM

\* CLICK HERE TO VIEW THE EAST KELLY BUTTE REFINEMENT PLAN DIAGRAM



There are no warranties that accompany this product. Users assume all responsibility for any loss or damage arising from any error, omission, or positional inaccuracy of this product.





# North Gateway Vicinity


 Urban Growth Boundary

 Refinement Plan Boundary\*

### Plan Designations

 Natural Resource

 Public Land and Open Space

 Urban Holding Area - Employment

\* Refer to the applicable Refinement Plan diagram to see the proposed plan designations for Refinement Plan Areas.

Development & Public Works Dept.  
**June 2023**  
Geographic Information Services



0 1/8 1/4 1/2 Mi.



There are no warranties that accompany this product. Users assume all responsibility for any loss or damage arising from any error, omission, or positional inaccuracy of this product.



\* [CLICK HERE TO VIEW THE GATEWAY REFINEMENT PLAN DIAGRAM](#)

# Central/South Springfield Vicinity

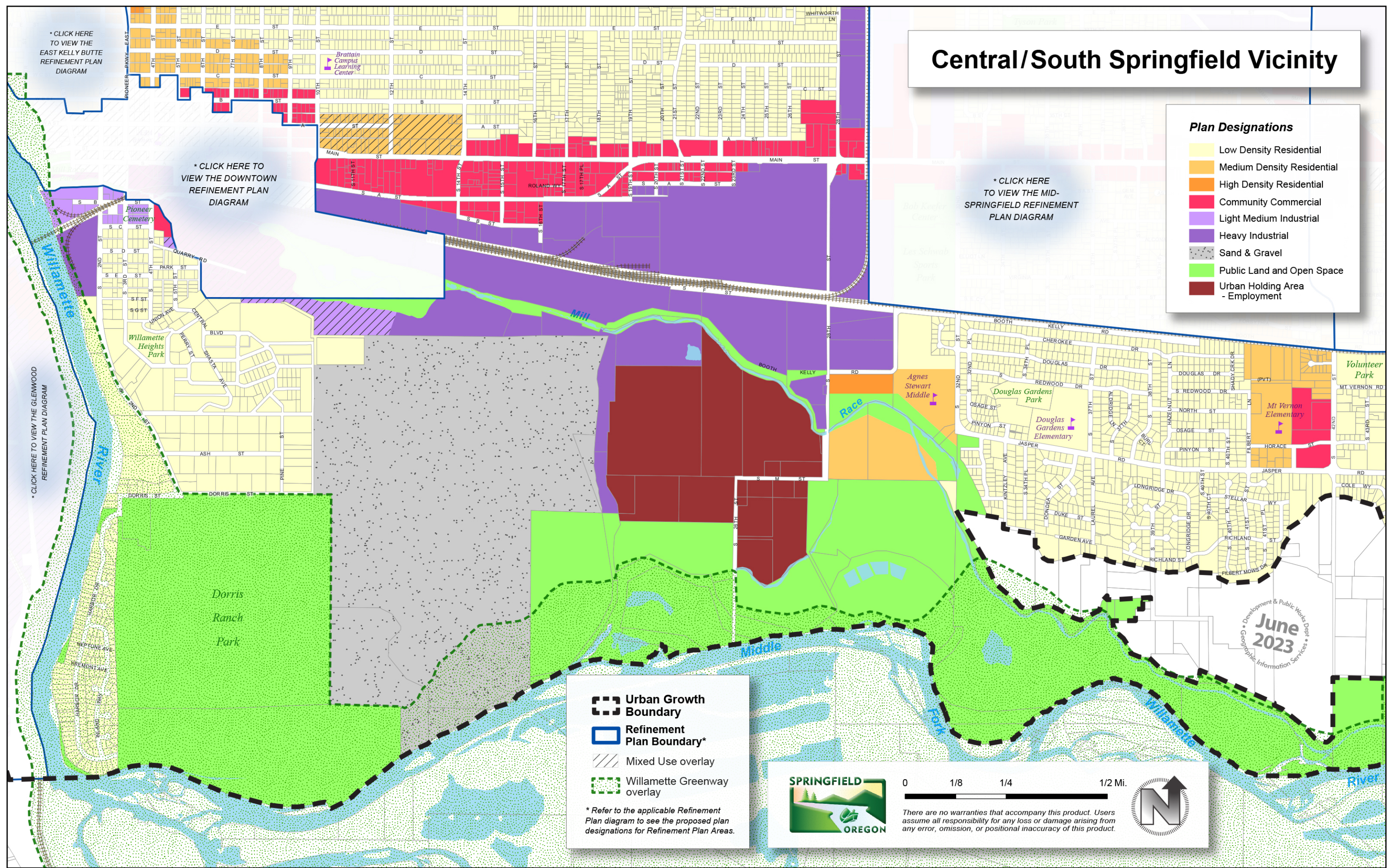
- Plan Designations**
- Low Density Residential
  - Medium Density Residential
  - High Density Residential
  - Community Commercial
  - Light Medium Industrial
  - Heavy Industrial
  - Sand & Gravel
  - Public Land and Open Space
  - Urban Holding Area - Employment

\* CLICK HERE TO VIEW THE EAST KELLY BUTTE REFINEMENT PLAN DIAGRAM

\* CLICK HERE TO VIEW THE DOWNTOWN REFINEMENT PLAN DIAGRAM

\* CLICK HERE TO VIEW THE MID-SPRINGFIELD REFINEMENT PLAN DIAGRAM

\* CLICK HERE TO VIEW THE GLENWOOD REFINEMENT PLAN DIAGRAM



- Urban Growth Boundary
- Refinement Plan Boundary\*
- Mixed Use overlay
- Willamette Greenway overlay

\* Refer to the applicable Refinement Plan diagram to see the proposed plan designations for Refinement Plan Areas.

0      1/8      1/4      1/2 Mi.

There are no warranties that accompany this product. Users assume all responsibility for any loss or damage arising from any error, omission, or positional inaccuracy of this product.

June 2023  
Development & Public Works Dept.  
Geographic Information Services

# Thurston Vicinity

McKenzie River

Cedar Creek



0 1/8 1/4 1/2 Mi.



There are no warranties that accompany this product. Users assume all responsibility for any loss or damage arising from any error, omission, or positional inaccuracy of this product.

\* CLICK HERE TO VIEW THE EAST MAIN REFINEMENT PLAN DIAGRAM

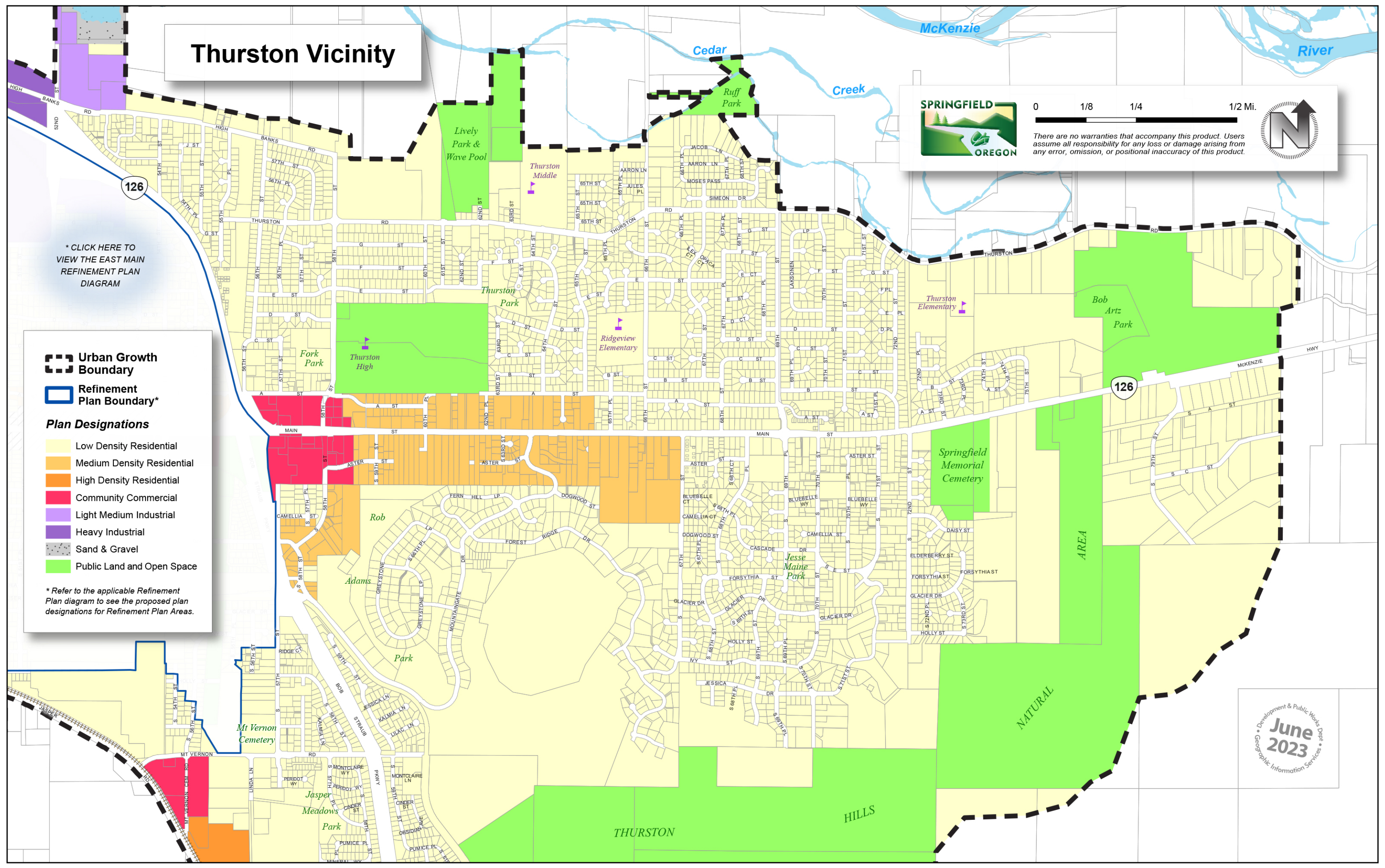
**Urban Growth Boundary**

**Refinement Plan Boundary\***

**Plan Designations**

- Low Density Residential
- Medium Density Residential
- High Density Residential
- Community Commercial
- Light Medium Industrial
- Heavy Industrial
- Sand & Gravel
- Public Land and Open Space

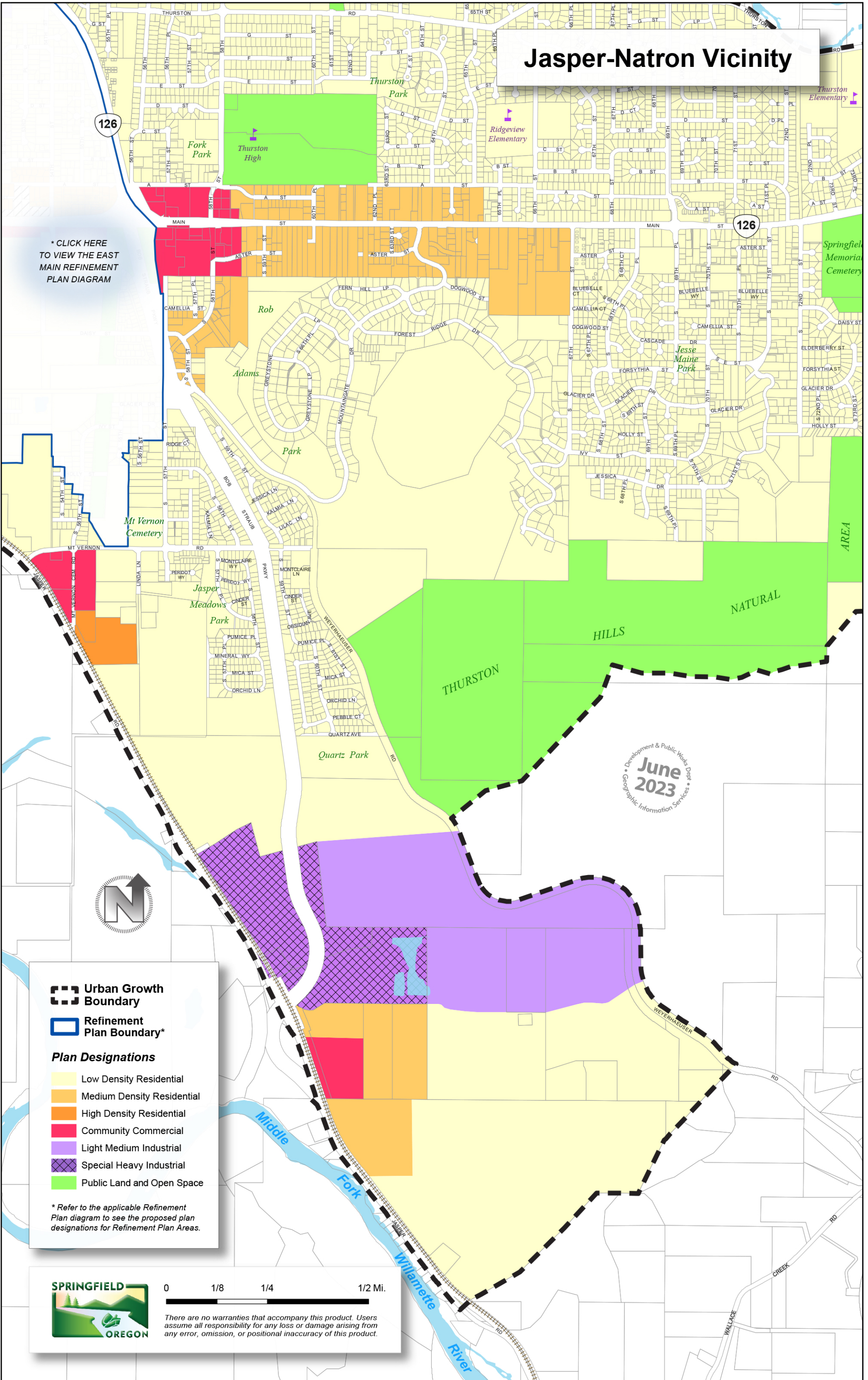
\* Refer to the applicable Refinement Plan diagram to see the proposed plan designations for Refinement Plan Areas.



Development & Public Works Dept.  
**June 2023**  
 Geographic Information Services

# Jasper-Natron Vicinity

\* CLICK HERE  
TO VIEW THE EAST  
MAIN REFINEMENT  
PLAN DIAGRAM



Development & Public Works Dept.  
**June 2023**  
Geographic Information Services



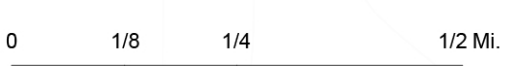
**Urban Growth Boundary**

**Refinement Plan Boundary\***

**Plan Designations**

- Low Density Residential
- Medium Density Residential
- High Density Residential
- Community Commercial
- Light Medium Industrial
- Special Heavy Industrial
- Public Land and Open Space

\* Refer to the applicable Refinement Plan diagram to see the proposed plan designations for Refinement Plan Areas.



There are no warranties that accompany this product. Users assume all responsibility for any loss or damage arising from any error, omission, or positional inaccuracy of this product.