



Authorized by: _____
 Title: Sr. Contracts Analyst
 Date: 4-23-2024

April 23rd, 2024

**Addendum Number 24 to the Invitation to Bid for P21195;
42nd Street Overlay – IP to Marcola**

The City of Springfield is amending the above-mentioned Invitation to Bid, issued on April 10th, 2024. This Addendum is hereby made a part of the original contract documents to the same extent as though it were initially included therein.

The following changes/additions are made to the Project Bid Items:

<u>Item No.</u>	<u>Item</u>	<u>Per</u>	<u>Old/Incorrect Qty</u>	<u>Revised Qty</u>
<u>540</u>	<u>SIGNS, STANDARD SHEETING, SHEET ALUMINUM</u>	<u>SY</u>	<u>25</u>	<u>30</u>
<u>ADDED:</u>				
<u>490a</u>	<u>CROSSWALK CLOSURE SUPPORTS</u>	<u>Each</u>	<u>n/a</u>	<u>2</u>

The following changes are made to the Project Special Provisions:

1. Section 00902 – Crosswalk Closure Supports - This Section is added after Section 00867:

SECTION 00902 - CROSSWALK CLOSURE SUPPORTS

Section 00902, which is not a Standard Specification, is included in this Project by Special Provision.

Description

00902.00 Scope - This Work consists of constructing crosswalk closure supports and associated signs as shown.

Materials

00902.10 Materials - Furnish Materials meeting the following requirements:

Commercial Grade Concrete..... 00440
 Steel..... 01070.10 and 01070.12
 Signs..... 00940

Construction

00902.40 General - Install crosswalk closure supports and associated signs as shown or directed.

Measurement

00902.80 Measurement - The quantities of crosswalk closure supports will be measured on the unit basis. No separate measurement will be made for signs attached to crosswalk closure supports.

Payment

00902.90 Payment - The accepted quantities of Work done under this Section will be paid for at the Contract unit price, per each, for the item "Crosswalk Closure Supports".

Payment will be payment in full for furnishing and placing all Materials, including signs, and for furnishing all Equipment, labor, and Incidentals necessary to complete the Work as specified.

2. Subsection 00920.80 Measurement - This subsection is replaced with the following subsection:

00920.80 Measurement - Add the following to the end of this subsection:

The estimated quantities of concrete for minor sign supports are:

Support Type	Quantity
Perforated Steel Square Tube Anchor Sign Supports	0.61 cu. yd.

3. Subsection 00930.80 Measurement - This subsection is replaced with the following subsection:

00930.80 Measurement - Add the following to the end of this subsection:

The estimated quantities of structural steel are as follows:

Item	Estimated Quantity (Pound)
Minor Sign Supports	
Perforated Steel Square Tube Anchor Sign Supports	222

The following changes are made to the Project Plans:

Plan sheets SS01, SS03, SS04, SS05, SS06 and SS07 are replaced with revised plan sheets SS01, SS03, SS04, SS05, SS06 and SS07. (Attached)

The City shall make a reasonable effort to notify all individuals, firms, and corporations to whom the City provided the initial Invitation to Bid and those individuals that attended a Pre-Bid meeting and provided contact information on the sign-in sheet when addenda are issued. Failure of the Contractor to receive or obtain such addenda shall not excuse them from compliance if awarded the Contract. The City is not responsible for any explanation, clarification, interpretation, or approval made or given in any manner except by written addenda issued by the City.

All Addenda issued are considered part of the specifications of the Invitation to Bid and, as such, are incorporated into the Contract as specified in Section 104.02 of the Standard Construction Specifications.

By signing below, I acknowledge the receipt of the following Addenda documents and certify that the specifications contained have been considered and incorporated into the bid as presented. No other terms or conditions of the Invitation to Bid are changed as a result of this Addendum.

ALL BIDDERS MUST ACKNOWLEDGE THIS ADDENDUM BY SIGNING AND DATING THIS DOCUMENT AND INCLUDING IT AS PART OF THEIR SUBMITTAL PACKAGE.

Signature

Date



Construction Bid Submittal

Project No. P21195

Project Title: 42nd Street Overlay, IP to Marcola

Updated 4-23-2024

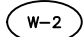


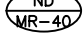





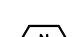
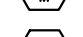
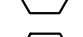


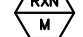


Item No.	Description	Specification Number	Unit	Approx. Quantity	Unit Price	Total Price Extension
10	MOBILIZATION	210	LS	1		
20	TEMPORARY PROTECTION AND DIRECTION OF TRAFFIC	221	LS	1		
30	TEMPORARY SIGNS	222	SF	1,190		
40	PORTABLE CHANGEABLE MESSAGE SIGNS	222	Each	6		
50	FLAGGERS	223	Hour	675		
60	FLAGGER STATION LIGHTING	223	Each	8		
70	RAILROAD FLAGGER SERVICES	223	Each	4		
80	TEMPORARY BARRICADE, TYPE II	224	Each	41		
90	TEMPORARY BARRICADE, TYPE III	224	Each	11		
100	TEMPORARY PLASTIC DRUMS	224	Each	53		
110	TEMPORARY FLEXIBLE PAVEMENT MARKERS	225	Each	1,140		
120	TEMPORARY REMOVABLE TAPE	225	Foot	2,156		
130	LEGEND REMOVAL	225	SF	204		
140	BAR REMOVAL	225	SF	2,156		
150	PEDESTRIAN CHANNELIZING DEVICES	228	FT	300		
160	TEMPORARY CURB RAMP, PARALLEL	228	Each	4		
170	EROSION CONTROL	280	LS	1		
180	COMPOST EROSION BLANKET	280	SY	49		
190	CONCRETE WASHOUT FACILITY	280	Each	2		
200	SEDIMENT FENCE	280	FT	41		
210	INLET PROTECTION, TYPE 3	280	Each	2		
220	INLET PROTECTION, TYPE 10	280	Each	10		
230	SEDIMENT BARRIER, TYPE 7	280	FT	2,250		
240	POLLUTION CONTROL PLAN	290	LS	1		
250	CONTAMINATED SOIL DISPOSAL	294	TN	94		
260	LEAD COMPLIANCE PLAN	294	LS	1		
270	CONSTRUCTION SURVEY WORK	305	LS	1		
280	REMOVAL OF SURFACINGS FOR CURB RAMP CONSTRUCTION	310	SY	763		
290	CLEARING AND GRUBBING	320	LS	1		
300	EMBANKMENT IN PLACE	330	CY	30		
310	SUBGRADE GEOTEXTILE	350	SY	275		

320	MINOR ADJUSTMENT OF MANHOLES	490	Each	3		
330	COLD PLANE PAVEMENT REMOVAL, 2 INCHES DEEP	620	SY	24,305		
340	COLD PLANE PAVEMENT REMOVAL, 4 INCHES DEEP	620	SY	1,736		
350	AGGREGATE BASE	640	TN	322		
360	AGGREGATE SHOULDERS	640	TN	94		
370	EMULSIFIED ASPHALT FOR TACK COAT	730	TN	11		
380	LEVEL 3, 1/2 INCH ACP MIXTURE, FIBER REINFORCED	744	TN	3225		
380a	LEVEL 3, 1/2 INCH ACP MIXTURE	744	TN	417		
390	28 INCH ASPHALT CONCRETE PAVEMENT REPAIR	748	SY	743		
400	CONCRETE CURBS, CURB AND GUTTER	759	FT	495		
410	CONCRETE CURBS, STANDARD CURB	759	FT	57		
420	CONCRETE WALKS	759	SF	3,707		
430	EXTRA FOR NEW CURB RAMPS	759	Each	18		
440	TRUNCATED DOMES ON NEW SURFACES	759	SF	240		
450	BI-DIRECTIONAL YELLOW TYPE I MARKERS	855	Each	170		
460	METHYL METHACRYLATE, EXTRUDED OR SPRAYED, SURFACE, NON-PROFILED	865	FT	27,500		
470	PAVEMENT LEGEND, TYPE B-HS: ARROWS	867	Each	23		
480	PAVEMENT LEGEND, TYPE B-HS: RAILROAD CROSSING	867	Each	1		
490	PAVEMENT BAR, TYPE B-HS	867	SF	1,300		
490A	CROSSWALK CLOSURE SUPPORTS	867	Each	2		
500	REMOVE EXISTING SIGNS	905	LS	1		
510	REMOVE AND REINSTALL EXISTING SIGNS	905	LS	1		
520	SIGN SUPPORT FOOTINGS	920	LS	1		
530	PERFORATED STEEL SQUARE TUBE ANCHOR SIGN SUPPORTS	930	LS	1		
540	SIGNS, STANDARD SHEETING, SHEET ALUMINUM	940	SF	30		
550	TRAFFIC SIGNAL MODIFICATION, 42 ND AND OR126 EB RAMPS	990	LS	1		
560	TRAFFIC SIGNAL MODIFICATION, 42 ND AND OLYMPIC	990	LS	1		
570	TRAFFIC SIGNAL MODIFICATION, 42 ND AND INTERNATIONAL PAPER	990	LS	1		
580	PERMANENT SEEDING	1030	Acre	0.10		
590	BARK MULCH	1040	CY	1.5		
TOTAL						

Anticipated Items: 00744.90

600	ACP Escalation					
TOTAL						

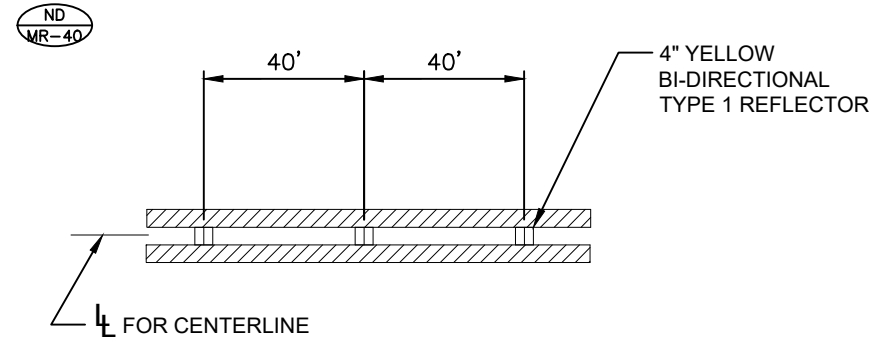
LEGEND

-  INSTALL 8" WHITE LINE.
-  INSTALL 4" WHITE LINE.
-  INSTALL 4" WHITE BROKEN LINE.
-  INSTALL NARROW DOUBLE 4" YELLOW LINES WITH MODIFIED REFLECTORS. SEE DETAIL BELOW.
-  INSTALL NARROW DOUBLE 4" YELLOW LINES.
-  INSTALL STANDARD CROSSWALK TWO 1' WHITE BARS.
-  INSTALL LEFT TURN ARROW (WHITE).
-  INSTALL RIGHT TURN ARROW (WHITE).
-  INSTALL STOP BAR 1' WHITE BAR.
-  INSTALL RAILROAD CROSSING (WHITE).
-  INSTALL SIGN (N) AND (M) SIGN SUPPORT.
-  MAINTAIN AND PROTECT EXISTING SIGN (N) AND SIGN SUPPORT.
-  REMOVE AND SAVE EXISTING SIGN (N) AND REMOVE EXISTING SIGN SUPPORT.
-  REINSTALL EXISTING SIGN (N) ON NEW (M) SIGN SUPPORT.
-  REMOVE EXISTING SIGN (N) AND (M) SIGN SUPPORT.
-  REMOVE AND SAVE EXISTING SIGN (N).
-  REINSTALL EXISTING SIGN (N).

N = SIGN NUMBER
M = MATERIAL:
P = ROUND PIPE SUPPORT
W = WOOD POST
ST = PERFORATED STEEL SQUARE TUBE SIGN SUPPORT
CC = CROSSWALK CLOSURE SUPPORT

GENERAL NOTES

1. ACCOMPANIED BY OREGON STD. DRAWINGS TM200, TM206, TM500, TM501, TM502, TM503, TM504, TM505, TM517, TM521, TM530, TM531, TM539, TM560, TM671, TM676, TM681, TM687, AND CITY OF SPRINGFIELD STD. DRAWING 5-181.
2. ALL PAVEMENT LEGENDS AND BARS SHALL BE TYPE "B-HS". LONGITUDINAL PAVEMENT MARKINGS SHALL BE DURABLE METHOD "A".
3. DIMENSIONS SHOWN ARE APPROXIMATE. ALL PAVEMENT MARKINGS SHALL BE APPROVED IN THE FIELD BY THE ENGINEER.
4. REMOVE ALL EXISTING STRIPING THAT CONFLICTS WITH THIS PLAN. EXISTING STRIPING SHALL BE REMOVED AS DIRECTED BY THE ENGINEER.



SIGN TABLE

SIGN #	QUANTITY	SIGN TYPE	SIGN DESCRIPTION	REMARKS
1	-	R1-1	STOP	REMOVE AND REINSTALL ON 2-1/2" ST WITH ANCHOR SIGN SUPPORT
1a	-		MARCOLA RD	REMOVE AND REINSTALL ABOVE SIGN 1
1b	-		42ND STREET	REMOVE AND REINSTALL ABOVE SIGN 1a
2	-	W11-10	TRUCKS	MAINTAIN EXISTING SIGN
3	-		SPEED 45	REMOVE EXISTING SIGN
4	-		MCKENZIE R. BEND STRAIGHT, WEST 126 EUGENE RIGHT	MAINTAIN EXISTING SIGN
5	-		42ND ST. MARCOLA LEFT, SPRINGFIELD JASPER RIGHT	MAINTAIN EXISTING SIGN
6	-		MARCOLA STRAIGHT, WEST 126 EUGENE LEFT	MAINTAIN EXISTING SIGN
7	-	W3-3	SIGNAL AHEAD	MAINTAIN EXISTING SIGN
8	-		126 EAST MCKENZIE RIVER BEND LEFT	MAINTAIN EXISTING SIGN
9	-		126 EAST MCKENZIE RIVER BEND RIGHT	MAINTAIN EXISTING SIGN
10	-	R1-1	STOP	MAINTAIN EXISTING SIGN
11	-		TRUCK ROUTE LEFT/STRAIGHT	MAINTAIN EXISTING SIGN
12	-	R4-1	DO NOT PASS	REMOVE EXISTING SIGN
13	2	R9-9	SIDEWALK CLOSED	REMOVE EXISTING AND INSTALL NEW SIGN ON CROSSWALK CLOSED SIGN SUPPORT
14	-	R2-1	SPEED LIMIT 35	MAINTAIN EXISTING SIGN
15	3	R2-1	SPEED LIMIT 45	INSTALL ON 2" ST WITH ANCHOR SIGN SUPPORT
16	1	W10-1	RAILROAD CROSSING	REMOVE AND REINSTALL ON 2" ST WITH ANCHOR SIGN SUPPORT
17	-		BEGIN BIKE ROUTE	REMOVE EXISTING SIGN
18	-		BIKES YIELD	MAINTAIN EXISTING SIGN
19	-	W5-1	ROAD NARROWS	REMOVE EXISTING SIGN
20	-	R10-6	STOP HERE ON RED	REMOVE EXISTING SIGN
21	1	R3-17	BIKE LANE	INSTALL ON 2" ST WITH ANCHOR SIGN SUPPORT
21a	1	R3-17bp	ENDS	INSTALL BELOW SIGN 21
22	1	W3-3	SIGNAL AHEAD	REMOVE AND INSTALL NEW SIGN ON 2" PSST WITH ANCHOR SIGN SUPPORT
23	-	R2-1	SPEED LIMIT 45	MAINTAIN EXISTING SIGN

No.	Revision/Issue	Date



Know what's below.
Call before you dig.

UTILITY LOCATIONS ARE APPROXIMATE. THE CONTRACTOR SHALL BE RESPONSIBLE FOR DETERMINING UTILITY LOCATIONS PRIOR TO BEGINNING OF CONSTRUCTION. THESE PLANS MAY NOT SHOW ALL UTILITIES OR THE CORRECT LOCATIONS.

DOWL
920 Country Club Rd., Suite 100B
Eugene, OR 97401
541-683-6090
WWW.DOWL.COM

**Project P21195
42ND STREET OVERLAY
IP TO MARCOLA ROAD**

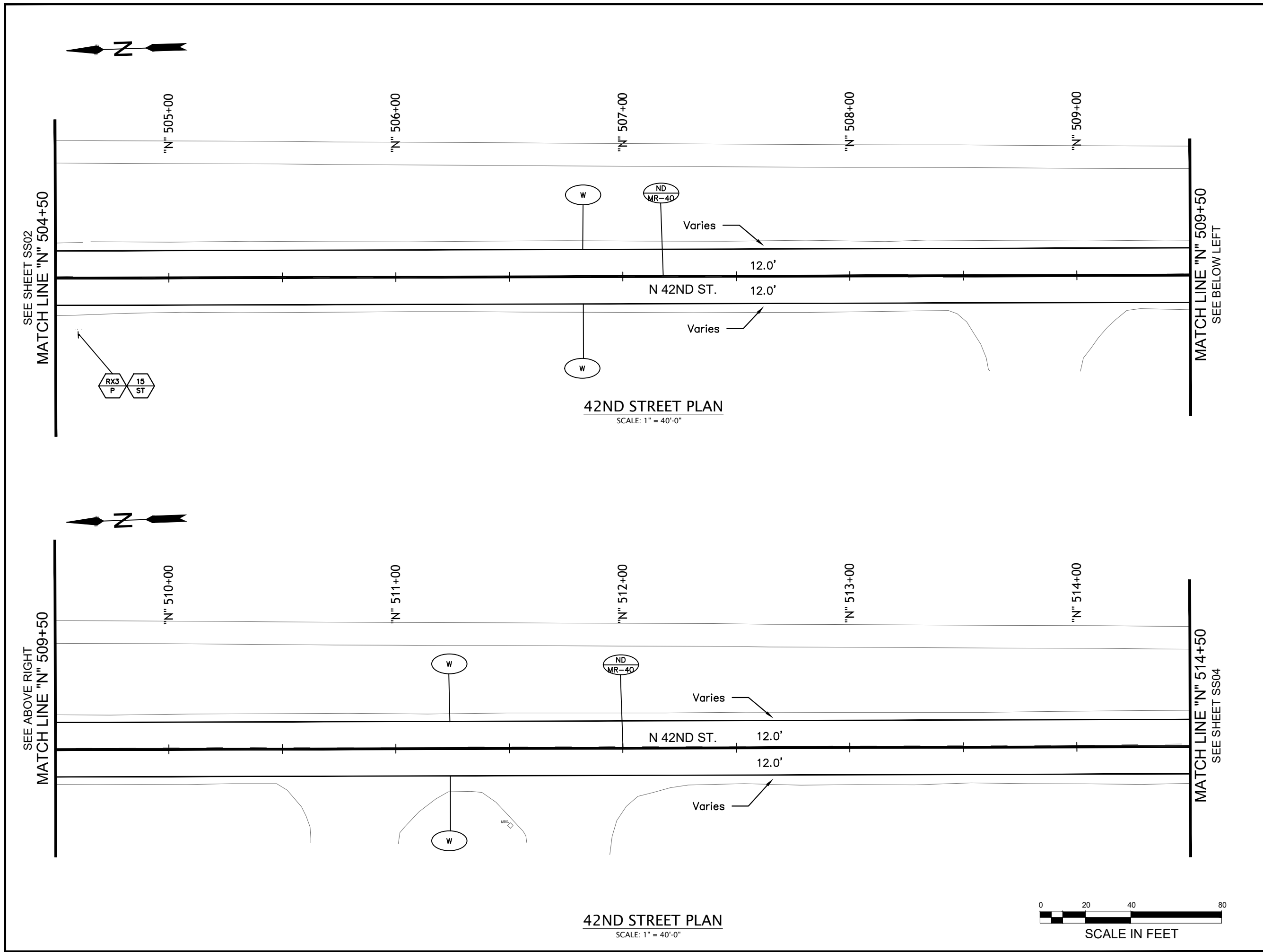
City of Springfield
PUBLIC WORKS / ENGINEERING
205 FIFTH STREET, SPRINGFIELD, OR 97477
PHONE (541) 726-3753 FAX (541) 726-3689
INTERNET www.springfield-or.gov



EXPIRES: 12/31/24

SIGNING & STRIPING LEGEND

NO SCALE **SHEET SS01 OF 99**
DRAWN BY: C. DENNING
DESIGNED BY: C. DENNING
CHECKED BY: S. PATTERSON



SEE SHEET SS02
MATCH LINE "N" 504+50

MATCH LINE "N" 509+50
SEE BELOW LEFT

SEE ABOVE RIGHT
MATCH LINE "N" 509+50

MATCH LINE "N" 514+50
SEE SHEET SS04

42ND STREET PLAN
SCALE: 1" = 40'-0"

42ND STREET PLAN
SCALE: 1" = 40'-0"



No.	Revision/Issue	Date



Know what's below.
Call before you dig.

UTILITY LOCATIONS ARE APPROXIMATE. THE CONTRACTOR SHALL BE RESPONSIBLE FOR DETERMINING UTILITY LOCATIONS PRIOR TO BEGINNING OF CONSTRUCTION. THESE PLANS MAY NOT SHOW ALL UTILITIES OR THE CORRECT LOCATIONS.

DOWL
920 Country Club Rd., Suite 100B
Eugene, OR 97401
541-683-6090
WWW.DOWL.COM

City of Springfield
PUBLIC WORKS / ENGINEERING
225 FIFTH STREET, SPRINGFIELD, OR 97477
PHONE (541) 726-3753 FAX (541) 726-3689
INTERNET www.springfield-or.gov

Project P21195
42ND STREET OVERLAY
IP TO MARCOLA ROAD



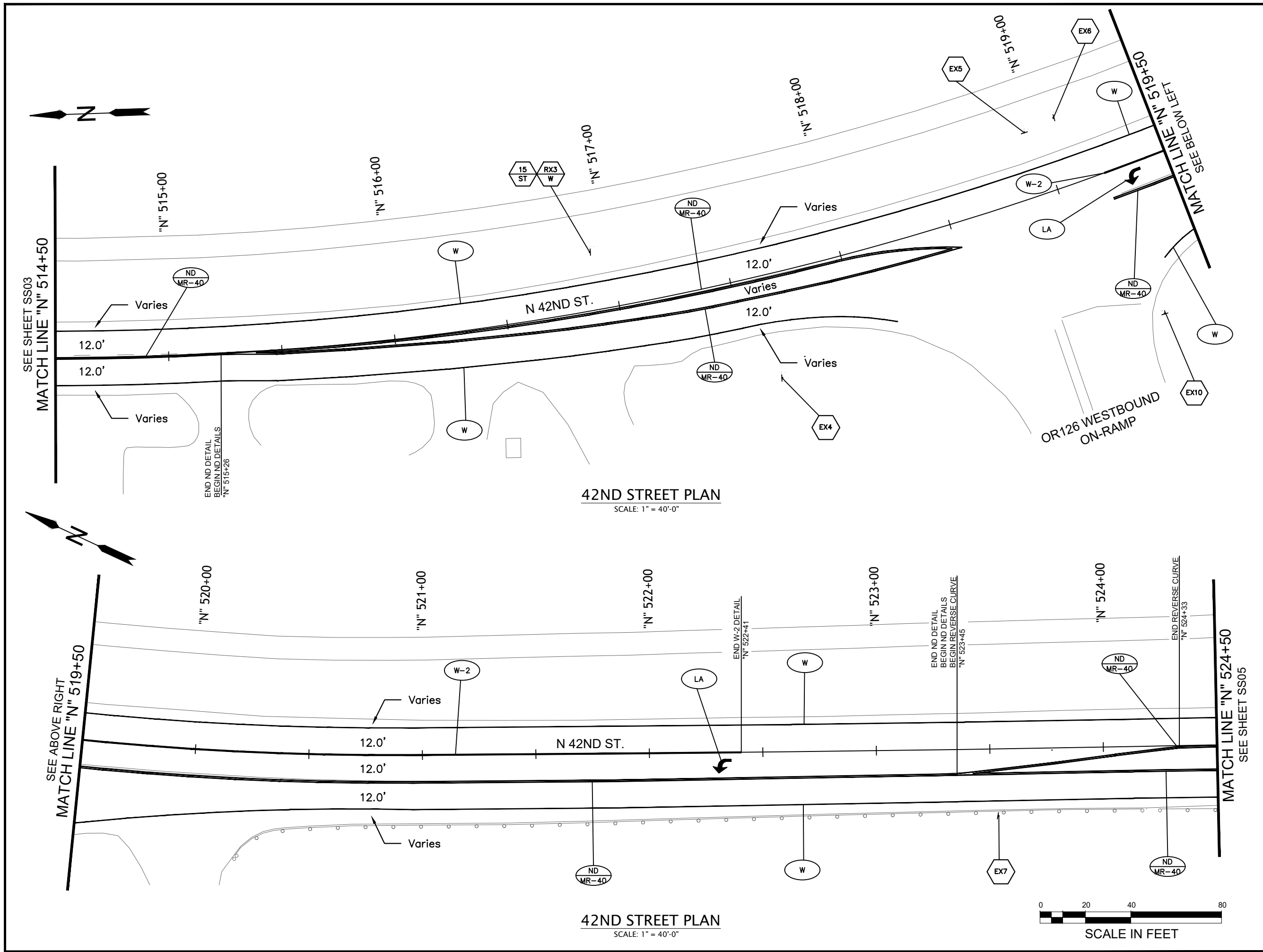
EXPIRES: 12/31/24

SIGNING & STRIPING PLAN

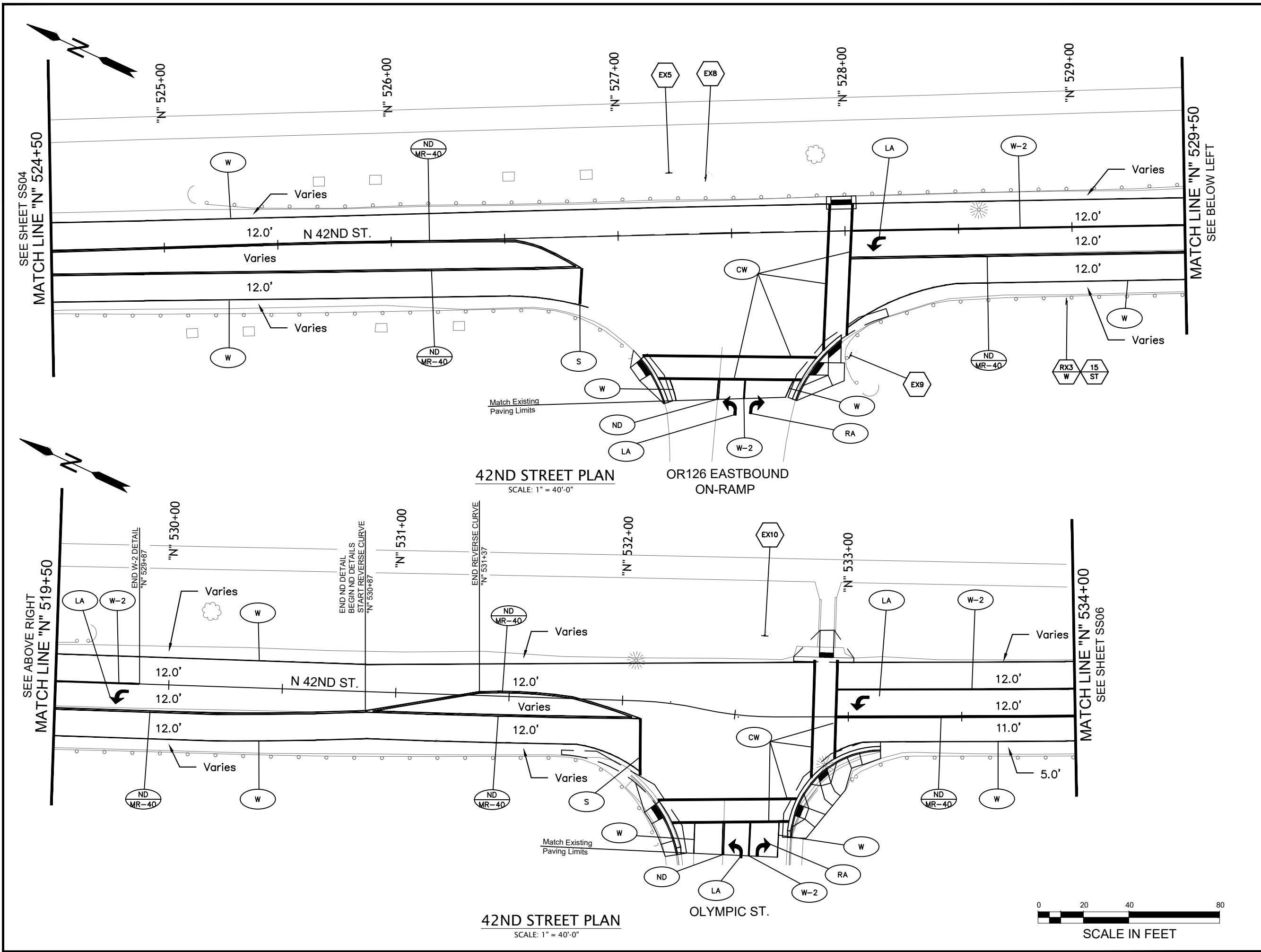
SCALE: 1" = 40'

DRAWN BY: C. DENNING
DESIGNED BY: C. DENNING
CHECKED BY: S. PATTERSON

SHEET
SS03
OF
99



 811 Know what's below. Call before you dig.	<small>UTILITY LOCATIONS ARE APPROXIMATE. THE CONTRACTOR SHALL BE RESPONSIBLE FOR DETERMINING UTILITY LOCATIONS PRIOR TO BEGINNING OF CONSTRUCTION. THESE PLANS MAY NOT SHOW ALL UTILITIES OR THE CORRECT LOCATIONS.</small>
 DOWL <small>920 Country Club Rd., Suite 100B Eugene, OR 97401 541-683-6090 WWW.DOWL.COM</small>	 City of Springfield <small>PUBLIC WORKS / ENGINEERING 225 FIFTH STREET, SPRINGFIELD, OR 97477 PHONE (541) 726-3753 FAX (541) 726-3689 INTERNET www.springfield-or.gov</small>
Project P21195 42ND STREET OVERLAY IP TO MARCOLA ROAD	
 EXPIRES: 12/31/24	
SIGNING & STRIPING PLAN SCALE: 1" = 40' DRAWN BY: C. DENNING DESIGNED BY: C. DENNING CHECKED BY: S. PATTERSON	
SHEET SS04 OF 99	



ss01 - ss08.dwg

No.	Revision/Issue	Date



Know what's below.
Call before you dig.

UTILITY LOCATIONS ARE APPROXIMATE. THE CONTRACTOR SHALL BE RESPONSIBLE FOR DETERMINING UTILITY LOCATIONS PRIOR TO BEGINNING OF CONSTRUCTION. THESE PLANS MAY NOT SHOW ALL UTILITIES OR THE CORRECT LOCATIONS.

DOWL
920 Country Club Rd., Suite 100B
Eugene, OR 97401
541-683-6090
WWW.DOWL.COM

City of Springfield
PUBLIC WORKS / ENGINEERING
205 FIFTH STREET, SPRINGFIELD, OR 97477
PHONE (541) 726-3753 FAX (541) 726-3689
INTERNET www.springfield-or.gov

**Project P21195
42ND STREET OVERLAY
IP TO MARCOLA ROAD**



EXPIRES: 12/31/24

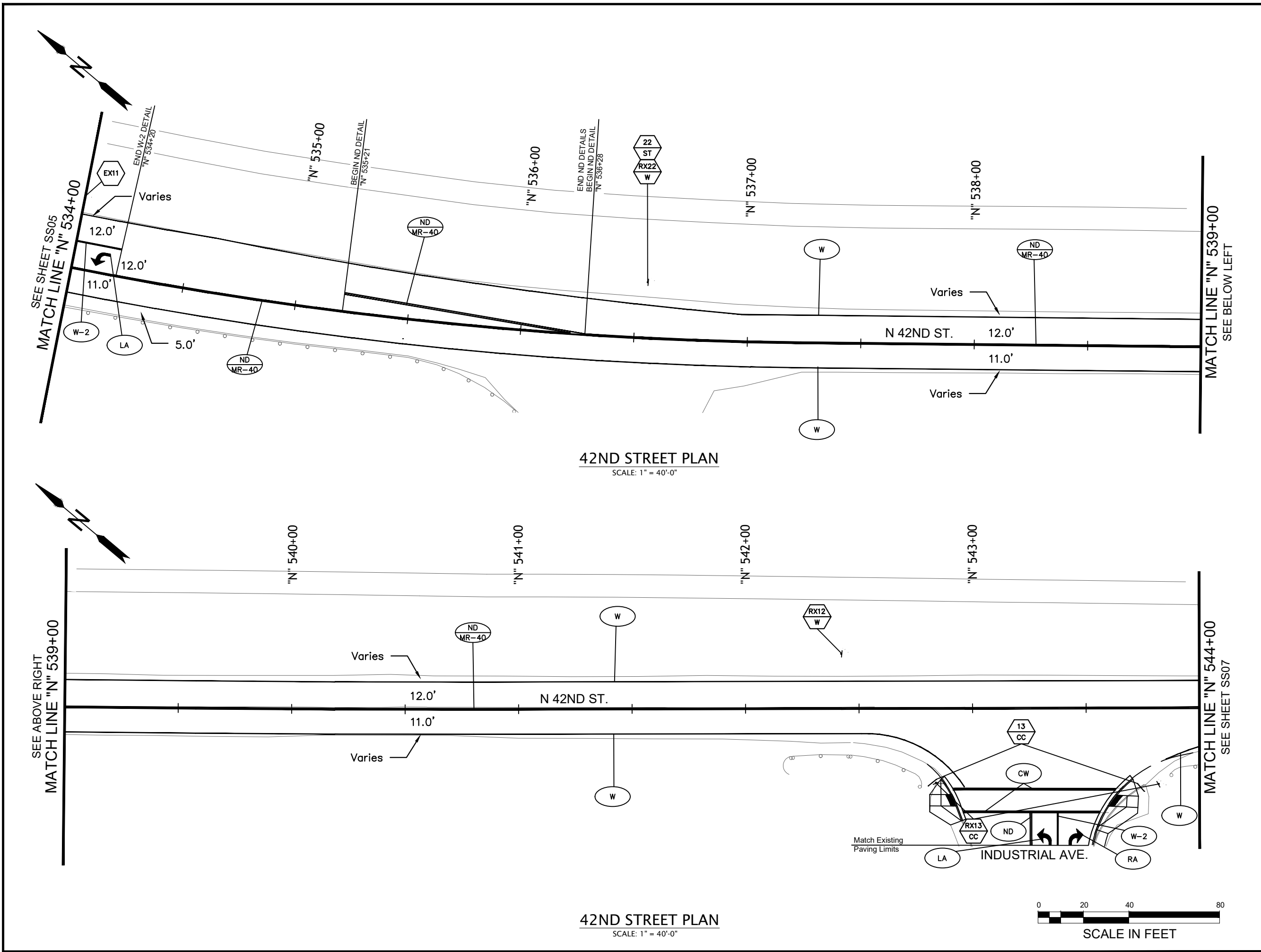
SIGNING & STRIPING PLAN

SCALE: 1" = 40'

DRAWN BY: C. DENNING
DESIGNED BY: C. DENNING
CHECKED BY: S. PATTERSON

**SHEET
SS05
OF
99**





No.	Revision/Issue	Date



Know what's below.
Call before you dig.

UTILITY LOCATIONS ARE APPROXIMATE. THE CONTRACTOR SHALL BE RESPONSIBLE FOR DETERMINING UTILITY LOCATIONS PRIOR TO BEGINNING OF CONSTRUCTION. THESE PLANS MAY NOT SHOW ALL UTILITIES OR THE CORRECT LOCATIONS.

DOWL
920 Country Club Rd., Suite 100B
Eugene, OR 97401
541-683-6090
WWW.DOWL.COM

City of Springfield
PUBLIC WORKS / ENGINEERING
225 FIFTH STREET, SPRINGFIELD, OR 97477
PHONE (541) 726-3753 FAX (541) 726-3689
INTERNET www.springfield-or.gov



Project P21195
42ND STREET OVERLAY
IP TO MARCOLA ROAD



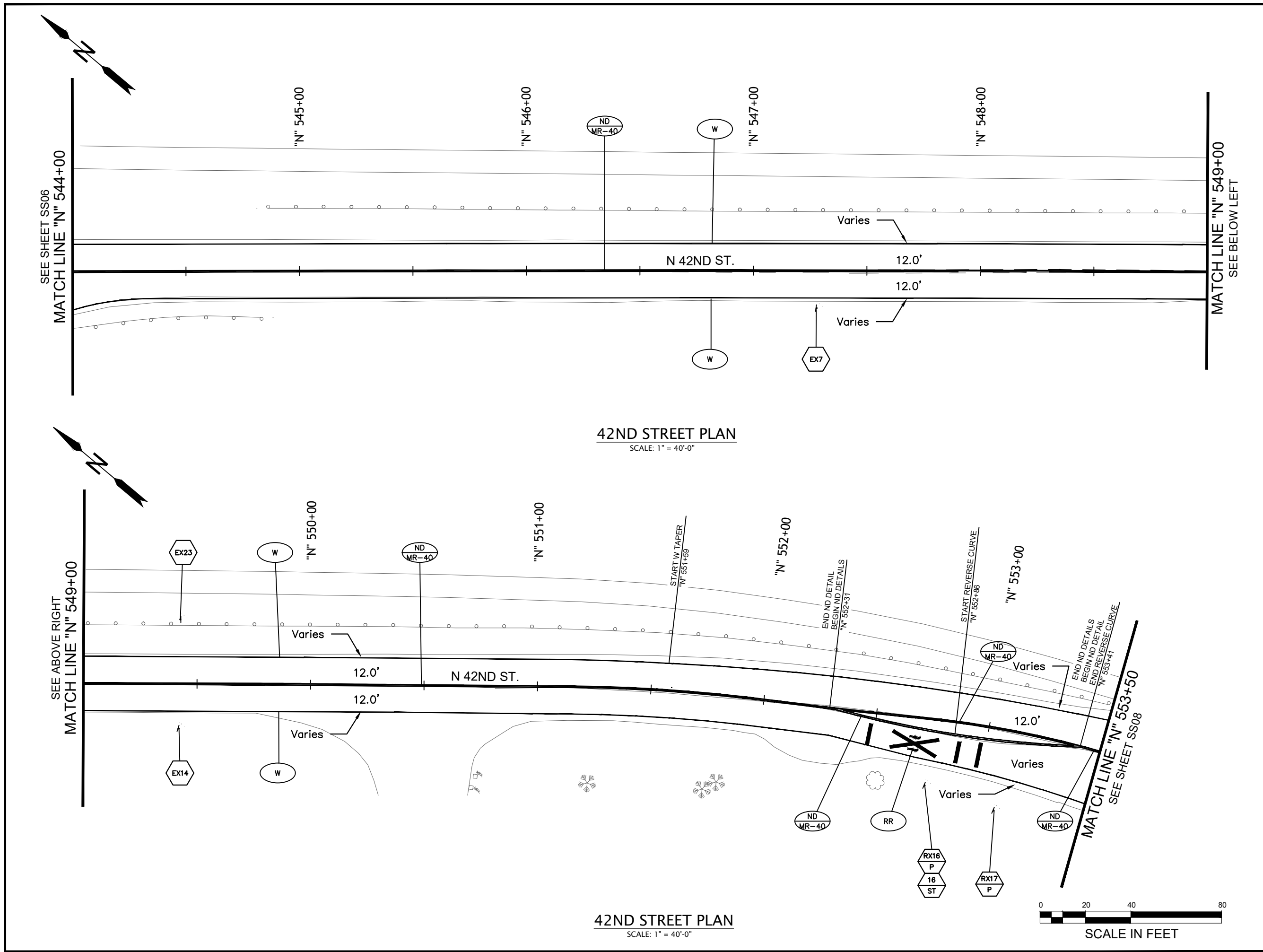
EXPIRES: 12/31/24

SIGNING & STRIPING PLAN

SCALE: 1' = 40'

DRAWN BY: C. DENNING
DESIGNED BY: C. DENNING
CHECKED BY: S. PATTERSON

SHEET
SS06
OF
99



42ND STREET PLAN
SCALE: 1" = 40'-0"

42ND STREET PLAN
SCALE: 1" = 40'-0"



No.	Revision/Issue	Date



Know what's below.
Call before you dig.

UTILITY LOCATIONS ARE APPROXIMATE. THE CONTRACTOR SHALL BE RESPONSIBLE FOR DETERMINING UTILITY LOCATIONS PRIOR TO BEGINNING OF CONSTRUCTION. THESE PLANS MAY NOT SHOW ALL UTILITIES OR THE CORRECT LOCATIONS.

DOWL
920 Country Club Rd., Suite 100B
Eugene, OR 97401
541-683-6090
WWW.DOWL.COM

City of Springfield
PUBLIC WORKS / ENGINEERING
225 FIFTH STREET, SPRINGFIELD, OR 97477
PHONE (541) 726-3753 FAX (541) 726-3689
INTERNET www.springfield-or.gov



Project P21195
42ND STREET OVERLAY
IP TO MARCOLA ROAD



SIGNING & STRIPING PLAN

SCALE: 1" = 40'

DRAWN BY: C. DENNING
DESIGNED BY: C. DENNING
CHECKED BY: S. PATTERSON

SHEET
SS07
OF
99