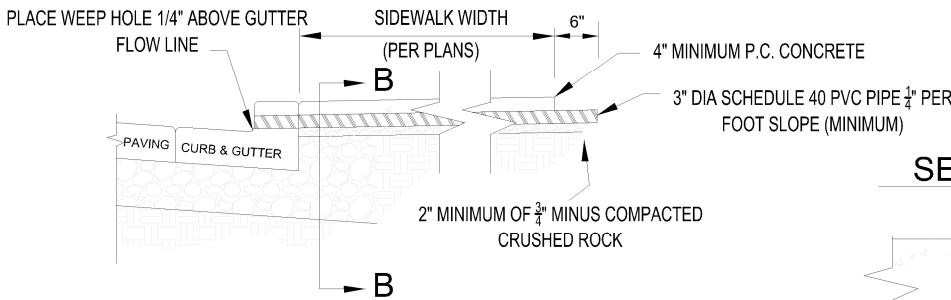
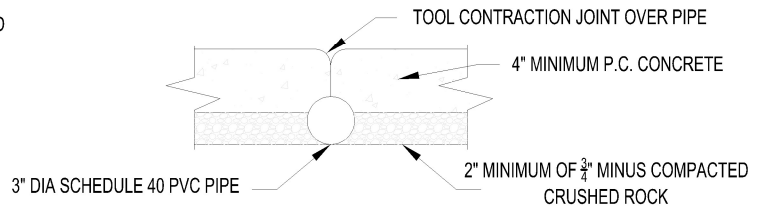


SECTION A - A



SECTION B - B



NOTES

- * CONNECTIONS BEHIND THE PROPERTY LINE MAY REQUIRE A PLUMBING PERMIT FROM THE BUILDING DEPARTMENT
- * UNDERDRAINS SHALL BE 3" SCHEDULE 40 PVC PIPE.
- * SIDEWALKS, ACCESS RAMPS, AND RESIDENTIAL DRIVEWAYS SHALL BE 3000 PSI MINIMUM FIELD STRENGTH (3450 PSI LAB STRENGTH) 6.0 SACK MIX CONCRETE
- * CURBS & COMMERCIAL DRIVEWAYS SHALL BE 3500 PSI MINIMUM FIELD STRENGTH (4025 PSI LAB STRENGTH) 6.3 SACK MIX CONCRETE



**UNDER DRAIN
INSTALLATION**

NO	REVISION	DATE	BY	APPR.
1	CITY DWG. 3-6			
2	DRAWING UPDATE	10/2019	CR	
3	DRAWING UPDATE	02/2021	TG	
4	DRAWING UPDATE	04/2024	JG	

STANDARD
 DRAWING
3-6
 2024